

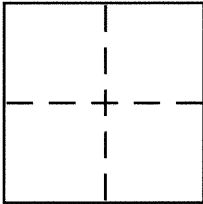
# CORNER RECORD

Document Number CR 8307

City of BERKELEY

County of ALAMEDA, California

Brief Legal Description CITY OF BERKELEY MONUMENT B1877



## CORNER TYPE

Government Corner . Control ☒   
 Meander . Property .   
 Rancho . Other .   
 Date of Survey 3-31-2016

## COORDINATES (Optional)

N.   
 E.   
 Zone NAD27 NAD83   
 NAD83 Epoch   
 Elev.   
 Vert. Datum: NGVD29 NAVD88   
 Meas. Units: Metric Imperial

Corner – Left as found ☒ Found and tagged . Established . Reestablished . Rebuilt .

Identification and type of corner found: Evidence used to identify or procedure used to establish or reestablish the corner:  
**IN COMPLIANCE WITH SECTION 8771 OF THE PROFESSIONAL LAND SURVEYORS' ACT, THIS CORNER  
 RECORD IS BEING FILED TO ESTABLISH THE POSITION OF AN EXISTING MONUMENT PRIOR TO  
 STREET REHABILITATION CONSTRUCTION.**

A description of the physical condition of the monument as found and as set or reset: SEE PAGE 2

## SURVEYOR'S STATEMENT

This Corner Record was prepared by me or under my direction in conformance with

the Land Surveyor's Act on 4-4-2016

Signed [Signature] P.L.S. or R.C.E. No. 5003



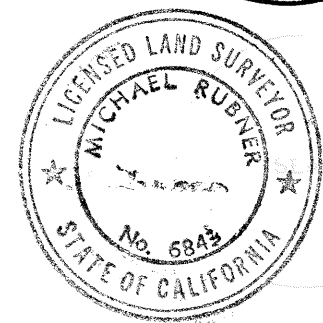
## COUNTY SURVEYOR'S STATEMENT

This Corner Record was received 25 APRIL, 2016

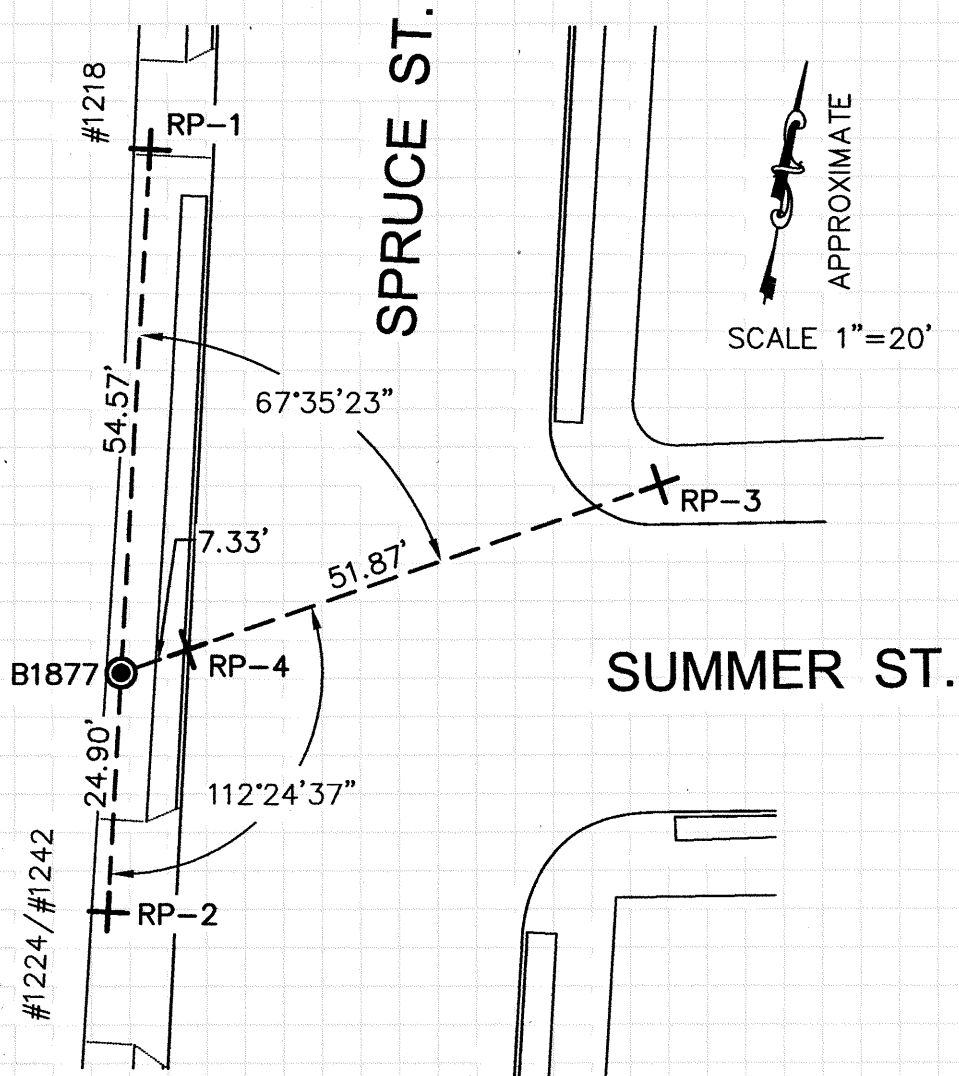
and examined and filed 4 MAY, 2016

Signed [Signature] P.L.S. or R.C.E. No. 6843

Title COUNTY SURVEYOR



County Surveyor's Comment



#### LEGEND

● FOUND CUT CROSS CITY MONUMENT

+ SET REFERENCE CROSS

#### NOTE:

THE EXISTING MONUMENT AS SHOWN IS REFERENCED BY INTERSECTING A LINE BETWEEN RP-1 TO RP-2 AND AN EXTENSION OF THE LINE FROM RP-3 TO RP-4