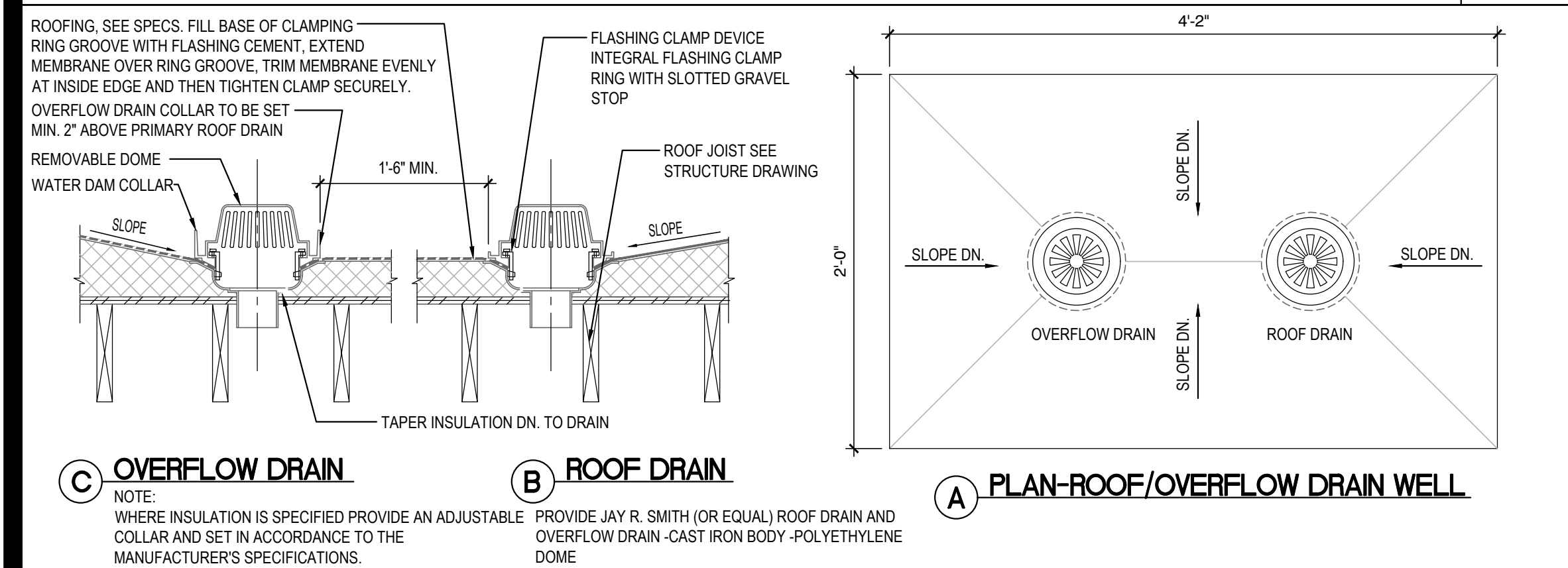
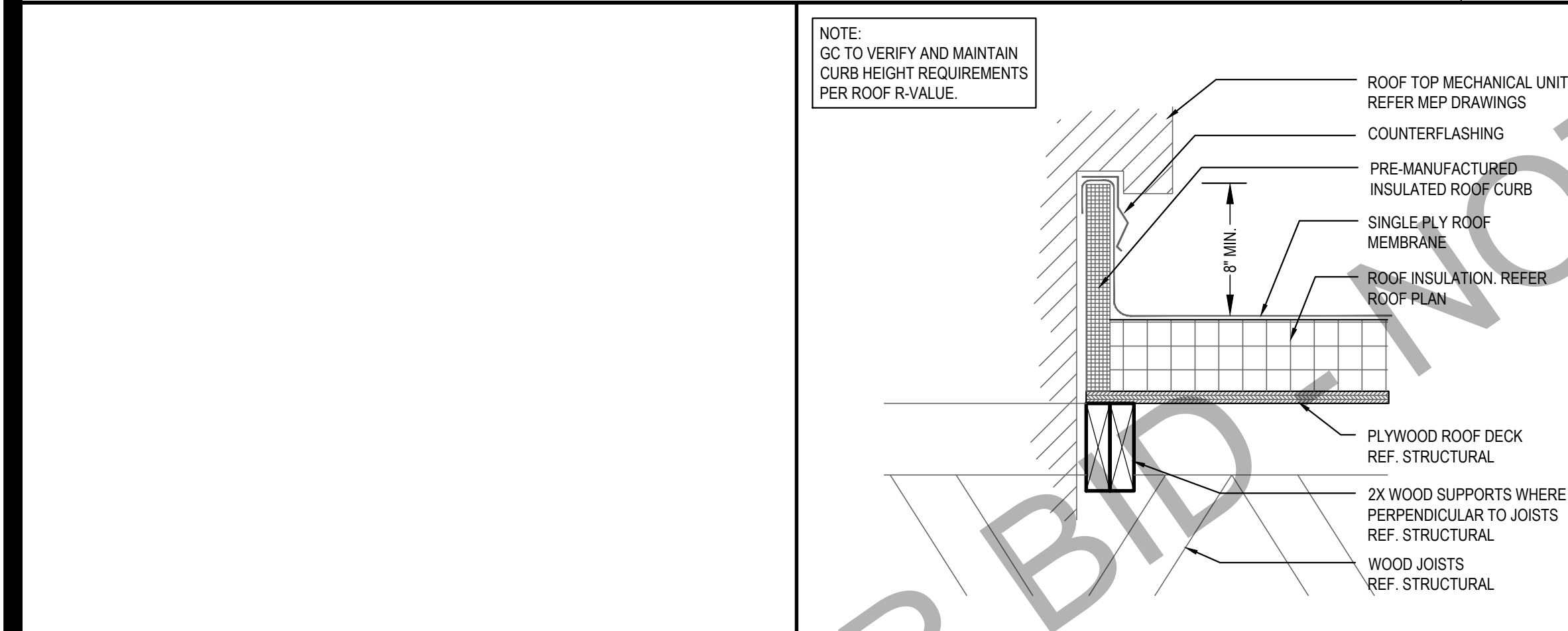


16  
Scale= 1/4" = 1'-0"  
A-107

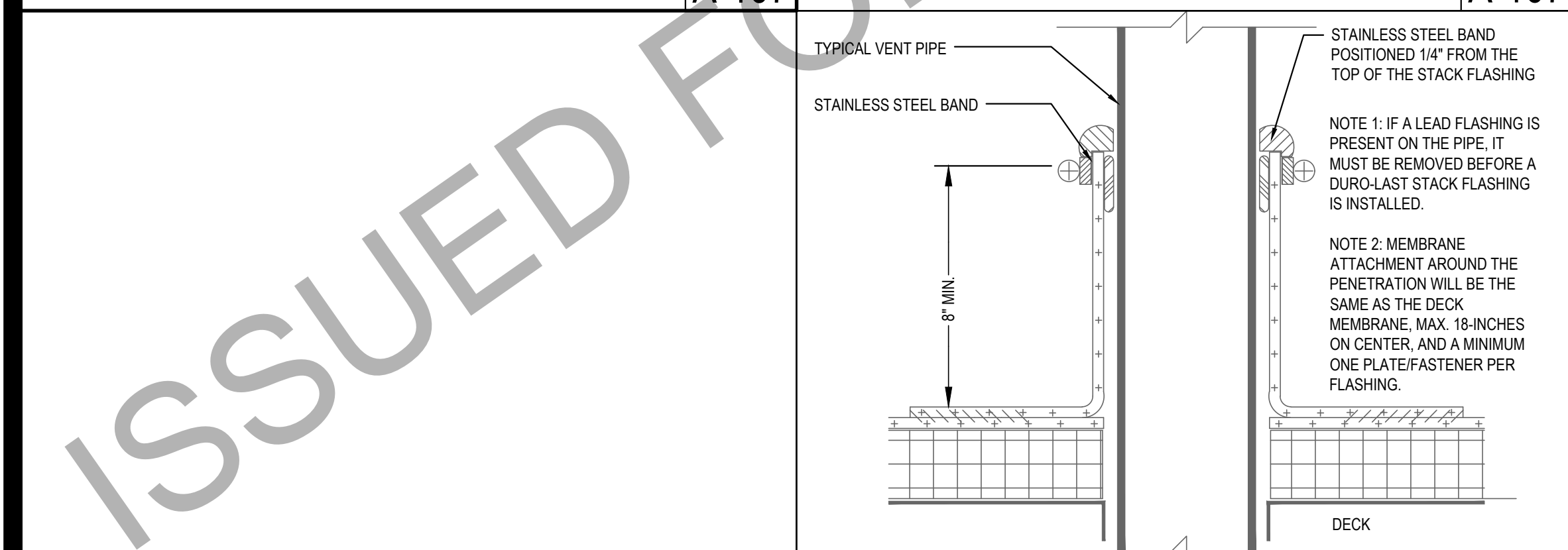


15  
Scale= NTS  
A-107



14  
Scale= NTS  
A-107

NOT USED  
Scale= 3" = 1'-0"  
A-107



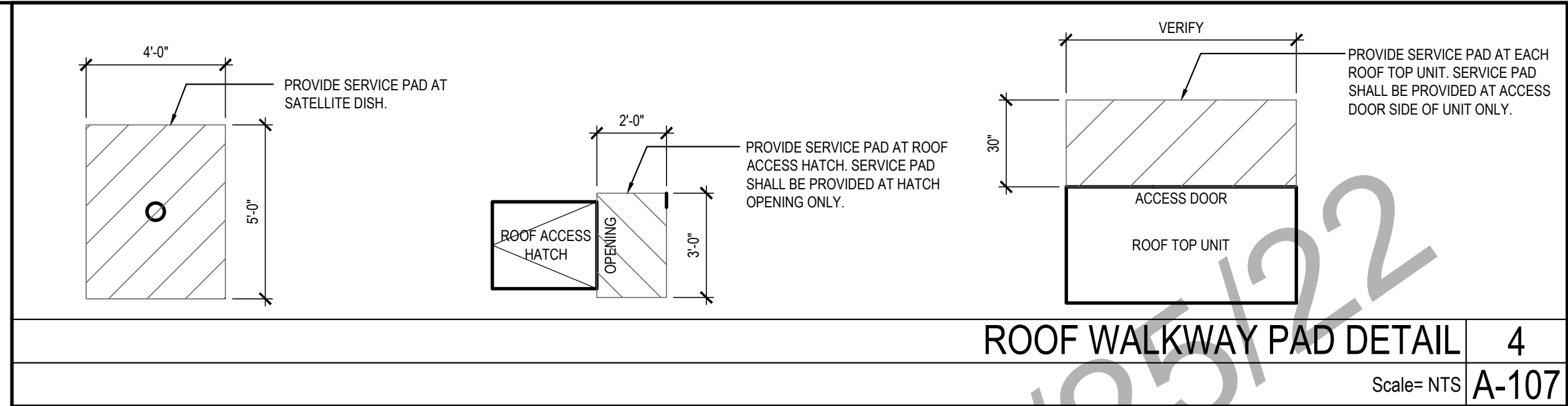
13  
Scale= NTS  
A-107

### ROOF PLAN NOTES:

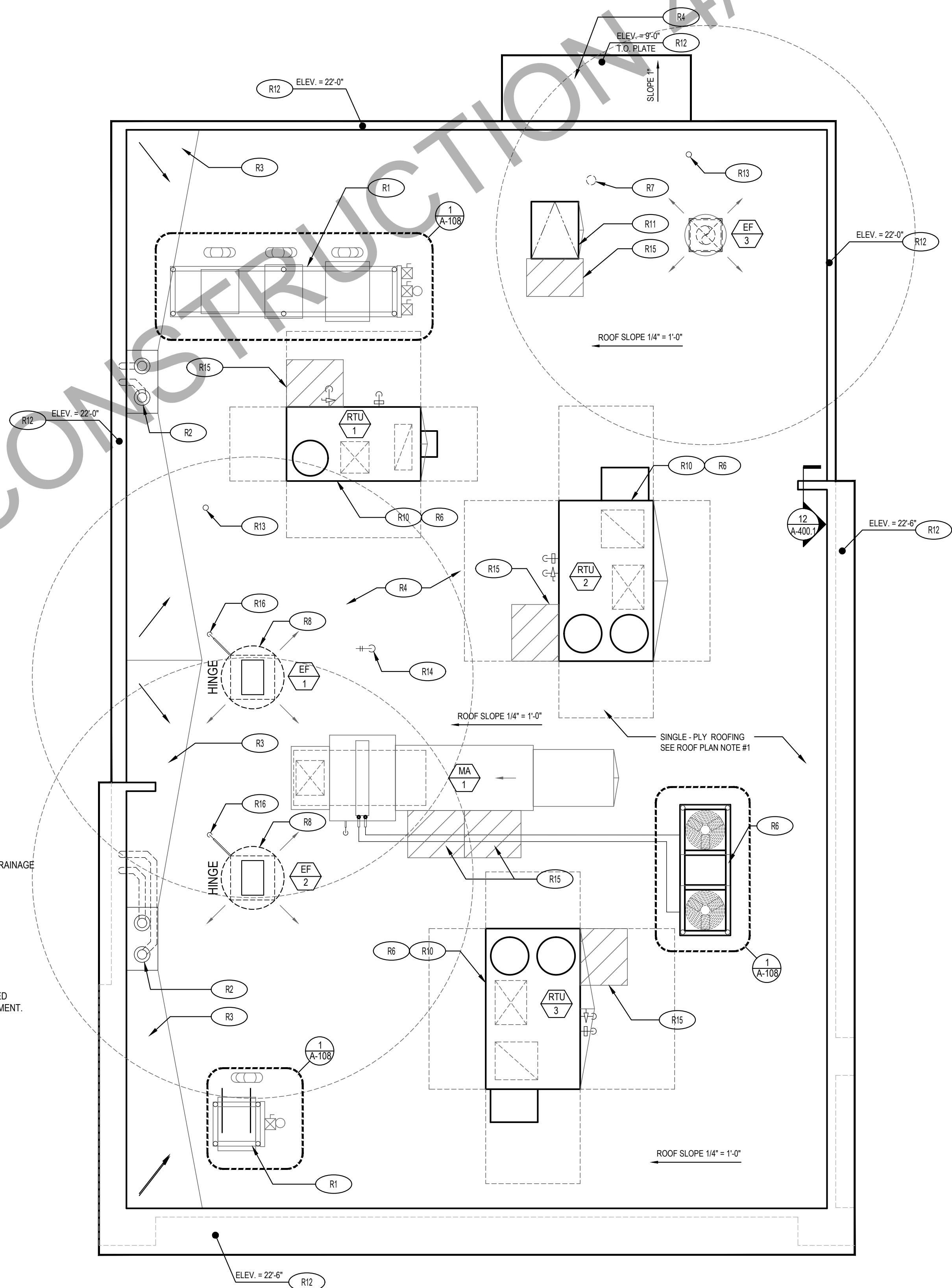
- WHITE, SINGLE-PLY, PVC 40MIL MECHANICALLY FASTENED ROOF MEMBRANE, AS MANUFACTURED BY DURO-LAST ROOFING, INC. NO ALTERNATES WILL BE ACCEPTED. PROVIDE STANDARD 15 YEAR WARRANTY.
- +6" INDICATES APPROXIMATE ELEVATION OF THE TOP OF ROOF PLYWOOD SHEATHING AT PLYWOOD CRICKET. SEE TRUSS DRAWINGS FOR ACTUAL ROOF SLOPE. ALL ROOF ELEVATIONS ARE GIVEN FROM TOP OF INTERIOR CONCRETE FLOOR SLAB (U.O.N.). WHEN FLOOR SLAB STEPS, ELEVATIONS ARE REFERENCED FROM THE HIGHEST FINISHED FLOOR.
- ANY PROJECTION THROUGH ROOF SHALL BE DETAILED PER THE SINGLE PLY ROOFING MANUFACTURER'S RECOMMENDED DETAILS.
- ALL EXHAUST FANS AND AIR CONDITIONING EQUIPMENT DESIGNATIONS ARE TAKEN FROM MECHANICAL DRAWINGS.
- NOT USED.
- CONTRACTOR SHALL CONFIRM THAT ALL AREAS OF ROOF ARE PROVIDED WITH POSITIVE DRAINAGE.
- ALL ROOF PENETRATIONS FOR PLUMBING VENTS, POWER CONDUITS, ETC. SHALL BE FLASHED PER BUILDING SPECIFICATIONS AND DETAILS. VENTS SHALL BE AT LEAST 10'-0" HORIZONTAL OR 3'-0" ABOVE OUTSIDE AIR INTAKES (A/C UNITS, MAKE-UP AIR ).
- CONTRACTOR BE RESPONSIBLE FOR COORDINATION OF SIZES AND LOCATIONS OF ROOF OPENINGS (VENTS, DUCTS, ETC.), PLATFORMS, BASES ETC. COORDINATE SIZES OF MECHANICAL EQUIPMENT PLATFORMS, BASES, ROOF EQUIPMENT PLATFORMS AND OPENINGS SHOWN ON DRAWINGS WITH EQUIPMENT BEING SUPPLIED. SEE TYPICAL DETAILS ON THIS SHEET ALSO. COORDINATE INSTALLATION OF LIGHTING, POWER, CONVENIENCE OUTLETS ETC.
- FOR ALL STRUCTURAL FRAMING MEMBERS, SIZES, AND ADDITIONAL INFORMATION, SEE STRUCTURAL DRAWINGS.
- PROVIDE ROOF CRICKET AT MECHANICAL EQUIPMENT TO ASSURE POSITIVE ROOF DRAIN.
- ALL ROOF EQUIPMENT TO BE SCREENED FROM PUBLIC VIEW.
- ROOFTOP EQUIPMENT TO BE LOCATED AT LEAST 42" MINIMUM FROM TOWERS FOR SERVICING
- PROVIDE SERVICE PAD AT EACH UNIT ONLY AT SERVICE ACCESS DOOR
- ALL GAS PIPING ON ROOF TO BE PAINTED SAFETY YELLOW

### ROOF PLAN KEYNOTES:

- (R1) REF: EQUIPMENT RACK (SEE SHEET A-108)
- (R2) 4" ROOF DRAIN AND OVERFLOW DRAIN (15 A-107)
- (R3) TAPERED ROOF INSULATION CRICKET TO ASSURE POSITIVE ROOF DRAINAGE
- (R4) SINGLE - PLY ROOFING SEE ROOF PLAN NOTE #1
- (R5) NOT USED
- (R6) ROOF TOP MECHANICAL UNIT SEE MECHANICAL DRAWING
- (R7) WATER HEATER VENT - SEE MEP PLANS. OFFSET VENTS AS REQUIRED TO MAINTAIN MIN. 10'-0" AWAY FROM AIR INTAKE SYSTEMS ON EQUIPMENT.
- (R8) EXHAUST FAN
- (R10) MECHANICAL UNIT CURB. SEE DETAIL 14/A-107
- (R11) ROOF ACCESS HATCH LOCATE BETWEEN 2 ADJACENT TRUSSES (16 A-107)
- (R12) TOP OF PLATE - REF. STRUCTURAL
- (R13) PLUMBING VENT (13 A-107)
- (R14) WEATHER PROOF HYDRANT
- (R15) PROVIDE WALK-WAY PAD AS SHOWN, REFERENCE DETAIL 4/A-107
- (R16) POWER SUPPLY LOCATION FOR ROOFTOP EXHAUST FANS FOR KITCHEN HOOD



4  
Scale= NTS  
A-107



1  
Scale= 1/4" = 1'-0"  
A-107



PANDA RESTAURANT GROUP INC.  
1683 Walnut Grove Ave.  
Rosemead, California  
91770  
Telephone: 626.799.9898  
Facsimile: 626.372.8288

All ideas, designs, arrangement and plans indicated or represented by this drawing are the property of Panda Express Inc. and were created for use on this specific project. None of these ideas, designs, arrangements or plans may be used by or disclosed to any person, firm, or corporation without the written permission of Panda Express Inc.

#### REVISIONS:

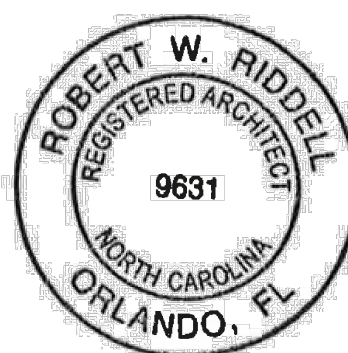
1	03.04.2022	ISSUE FOR PERMIT

DRAWN BY: JDV

PANDA PROJECT #: - S8-22-D8698  
C&P PROJECT #: - 2210806

**CUHACI PETERSON**  
2600 Maitland Center Parkway  
Suite #200  
Maitland, FL 32751  
P (407) 661-9100  
F (407) 661-9101  
c-p.com

03.04.2022



**PANDA EXPRESS**  
TRUE WARM AND WELCOME 2200  
3030 DERITA ROAD  
CONCORD, NC 28027

**A-107**

ROOF PLAN

TRUE WARM & WELCOME 2200 R4