

CORNER RECORD

Agency Index

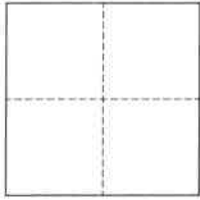
BK 151 PG 43

Document Number CR 16421

City of OaklandCounty of Alameda, CaliforniaBrief Legal Description Department of Transportation Monument near 8001 Oakport Street

CORNER TYPE

COORDINATES (Optional)



- ☐ Government Corner ☒ Control
☐ Meander ☐ Property
☐ Rancho ☐ Other

Date of Survey December 20, 2022

N. _____ E. _____

Elevation _____

Units ☐ Metric ☐ U.S. Survey Foot

Horizontal Datum _____

Zone _____ Epoch Date _____

Vertical Datum _____

☐ Complies with Public Resources Code §§8801-8819☐ Complies with Public Resources Code §§8890-8902

PLS Act Ref.:

☐ 8765(d)☒ 8771☐ 8773☐ Other:Corner/
Monument:☒ Left as found☐ Established☐ Rebuilt☒ Pre-Construction☐ Found and tagged☐ Reestablished☒ Referenced☐ Post-Construction

Narrative of corner identified and monument as found, set, reset, replaced, or removed:

☒ See sheet #2 for description(s):

This Corner Record is being filed to reference the position of an existing monument, prior to a street rehabilitation project. This document is for preservation purposes only, and no attempt was made to determine the relationship to property, centerline, or right-of-way lines.

SURVEYOR'S STATEMENT

This Corner Record was prepared by me or under my direction in conformance with

the Professional Land Surveyors' Act on February 3, 2023

Signed

P.L.S. or R.C.E. No.

8040

COUNTY SURVEYOR'S STATEMENT

This Corner Record was received _____

and examined and filed

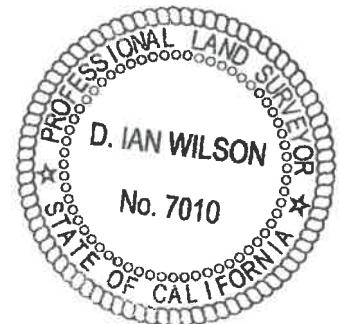
FEB 14 2023

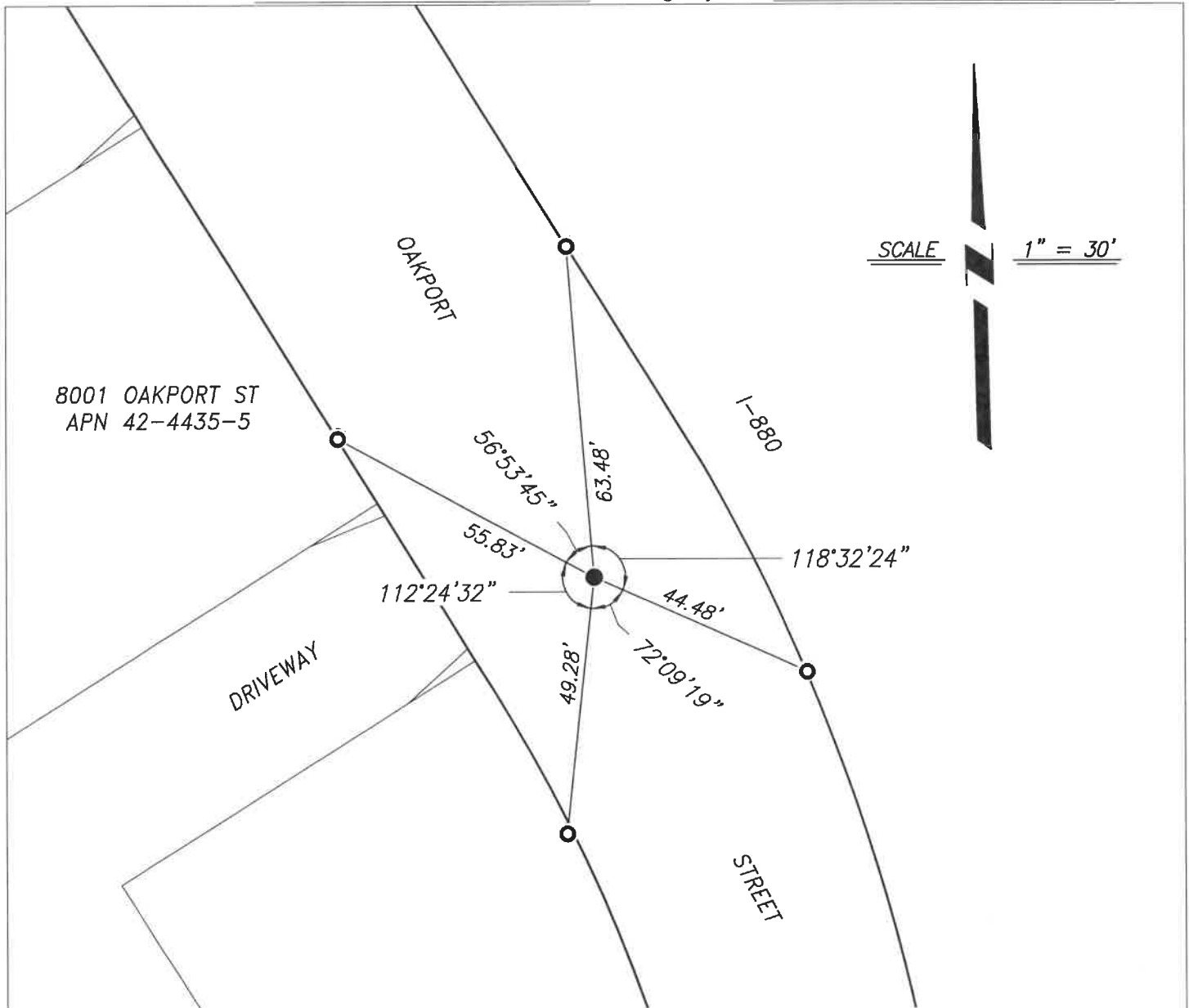
Signed

P.L.S. or R.C.E. No.

7010Title ALAMEDA COUNTY SURVEYOR

County Surveyor's Comment





REFERENCE

- (A) PARCEL MAP 8468 IN THE CITY OF OAKLAND, FILED ON SEPTEMBER 29, 2004, IN BOOK 278 OF PARCEL MAPS AT PAGES 21-23, ALAMEDA COUNTY RECORDS.
- (B) RIGHT OF WAY MAP RECORD R-10305.2, FILED DECEMBER 27, 2004, WITH THE ALAMEDA COUNTY TRANSPORTATION AUTHORITY.

LEGEND

- FOUND MONUMENT, 2-1/2" DISK, WITH PUNCH, IN WELL, DEPARTMENT OF TRANSPORTATION
- CUT CROSS ON CONCRETE CURB AS REFERENCE POINT

NOTES

1. REFERENCE (A) IS AN ALAMEDA COUNTY RECORD
2. REFERENCE (B) IS A STATE OF CALIFORNIA DEPARTMENT OF TRANSPORTATION RECORD.