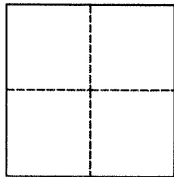


CORNER RECORD

Agency Index BK 106 PG 32
Document Number CR 10789

City of CASTRO VALLEY County of ALAMEDA, California
Brief Legal Description UB12Y3 (FAIRMONT DRIVE EAST OF FOOTHILL BLVD)



CORNER TYPE

Government Corner ☒ Control
Meander ☐ Property
Rancho ☐ Other

Date of Survey 10/18/2017

COORDINATES (Optional)

N. _____ E. _____

Elevation _____

Units Metric ☐ U.S. Survey Foot ☒

Horizontal Datum _____

Zone _____ Epoch Date _____

Vertical Datum _____

☐ Complies with Public Resources Code §§8801-8819

☐ Complies with Public Resources Code §§8890-8902

PLS Act Ref.: ☐ 8765(d) ☒ 8771 ☐ 8773 ☐ Other:

Corner/
Monument: ☐ Left as found ☐ Established ☐ Rebuilt ☐ Pre-Construction
☐ Found and tagged ☐ Reestablished ☐ Referenced ☒ Post-Construction

Narrative of corner identified and monument as found, set, reset, replaced, or removed:

☒ See sheet #2 for description(s):

*FOUND COUNTY BRASS CAP MON MARKED "21B" IN MON WELL, DOWN 12",
FOUND FOUR MAG NAILS AND TIES TO MH93H1 PER CR 10647 AND AS
SHOWN ON SHEET 2.*

SURVEYOR'S STATEMENT

This Corner Record was prepared by me or under my direction in conformance with

the Professional Land Surveyors' Act on NOVEMBER 9, 2017

Signed *James N. Landrum* P.L.S. or R.C.E. No. LS 5837



COUNTY SURVEYOR'S STATEMENT

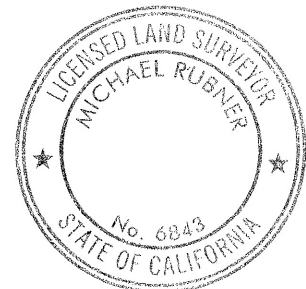
This Corner Record was received 13 NOVEMBER 2017

and examined and filed 18 APRIL 2018

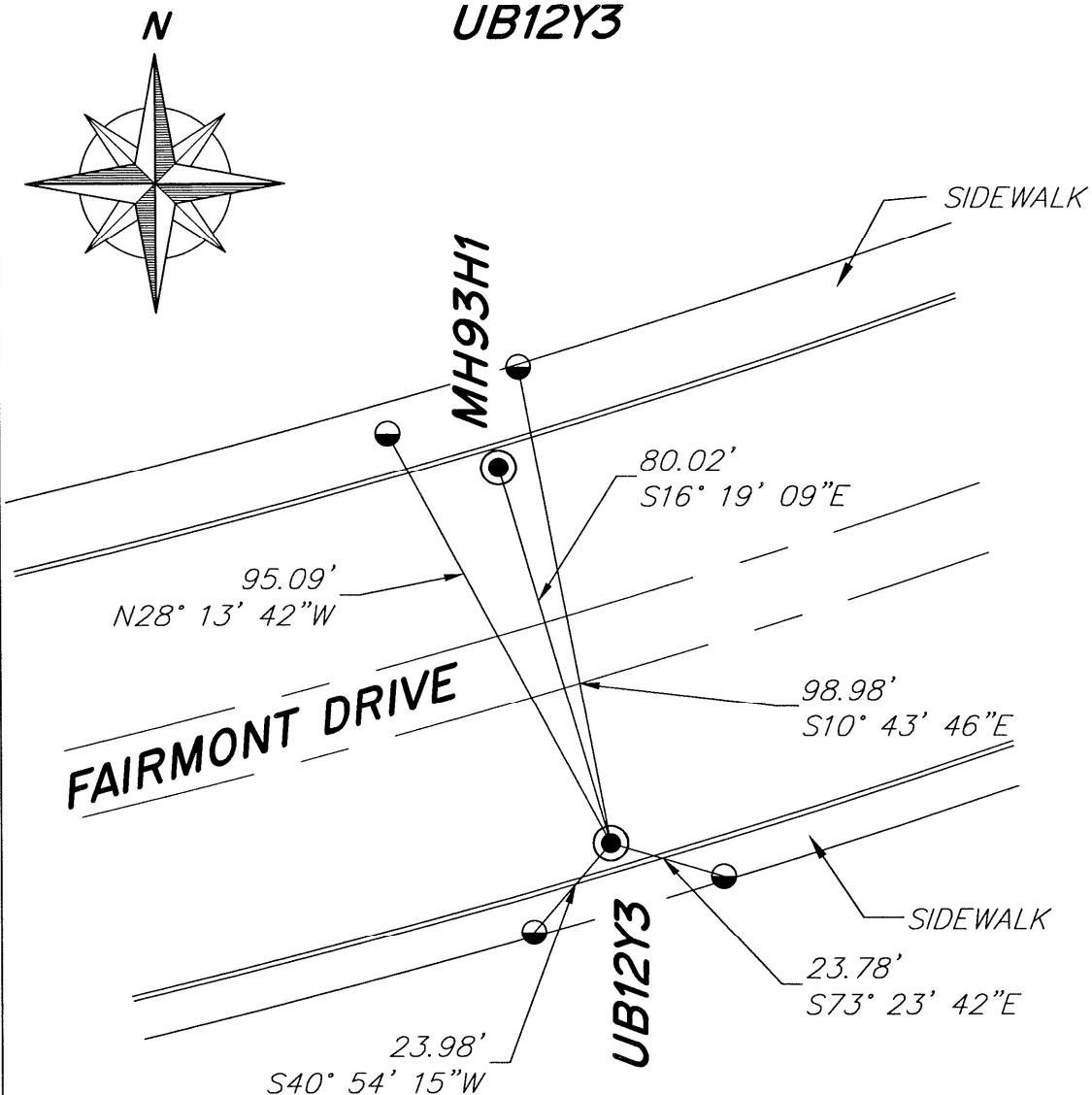
Signed *Michael Rubner* P.L.S. or R.C.E. No. 6843

Title COUNTY SURVEYOR

County Surveyor's Comment



SPEC 2321



LEGEND

● FOUND ACBCM IN MON WELL

● FOUND MAG NAIL UNLESS
OTHERWISE SHOWN

ACBCM ALAMEDA COUNTY
BRASS CAP MONUMENT

NOTE THAT BEARINGS ARE
APPROXIMATE AND ARE TO
BE USED FOR ANGLE
CALCULATIONS ONLY.