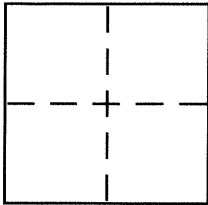


**CORNER RECORD**Document Number CR 7859City of BERKELEYCounty of ALAMEDA, CaliforniaBrief Legal Description CITY OF BERKELEY MONUMENT B0839**CORNER TYPE**

Government Corner ☐ Control ☒  
 Meander ☐ Property ☐  
 Rancho ☐ Other ☐  
 Date of Survey 11-19-2015

**COORDINATES (Optional)**

N. \_\_\_\_\_  
 E. \_\_\_\_\_  
 Zone \_\_\_\_\_ NAD27 ☐ NAD83 ☐  
 NAD83 Epoch \_\_\_\_\_  
 Elev. \_\_\_\_\_  
 Vert. Datum: NGVD29 ☐ NAVD88 ☐  
 Meas. Units: Metric ☐ Imperial ☐

**Corner** – Left as found ☐ Found and tagged ☐ Established ☐ Reestablished ☒ Rebuilt ☐

Identification and type of corner found: Evidence used to identify or procedure used to establish or reestablish the corner:  
**IN COMPLIANCE WITH SECTION 8771 OF THE PROFESSIONAL LAND SURVEYORS' ACT, THIS CORNER  
 RECORD IS BEING FILED TO RE-ESTABLISH THE POSITION OF AN EXISTING MONUMENT AFTER  
 STREET RESURFACING.**

A description of the physical condition of the monument as found and as set or reset: \_\_\_\_\_

SEE PAGE 2

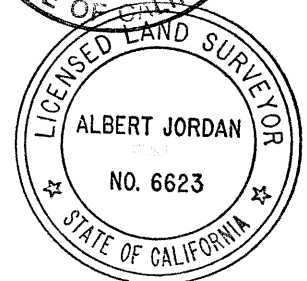
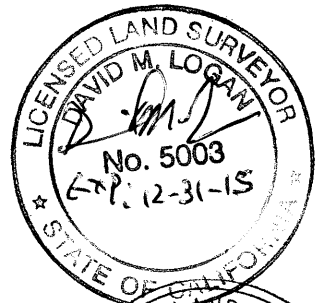
**SURVEYOR'S STATEMENT**

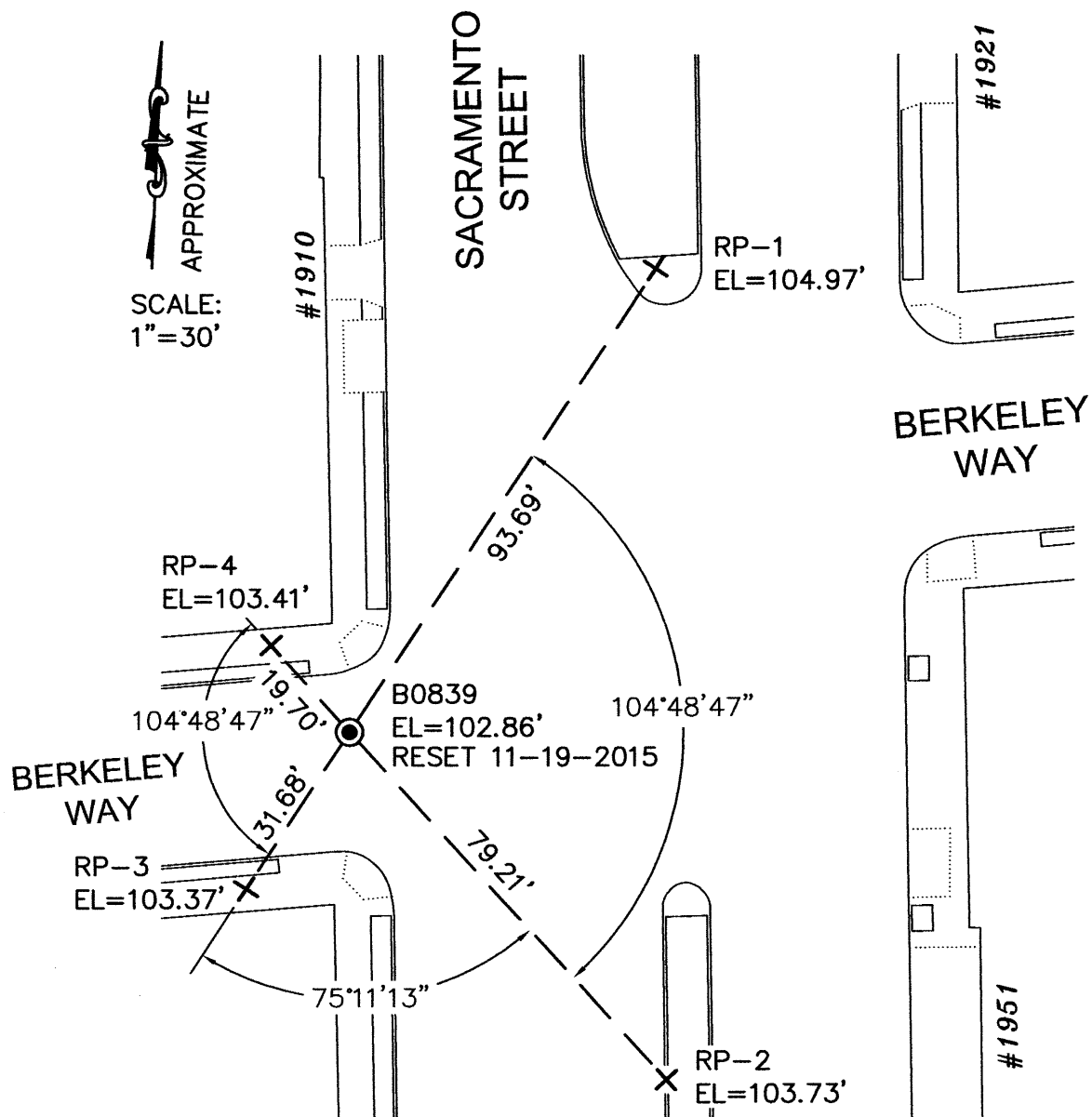
This Corner Record was prepared by me or under my direction in conformance with  
 the Land Surveyor's Act on NOVEMBER 24, 2015  
 Signed *D. M. N.* P.L.S. or R.C.E. No. 5003

**COUNTY SURVEYOR'S STATEMENT**

This Corner Record was received 12-09-2015  
 and examined and filed 12-23-2015  
 Signed *Albert Jordan* P.L.S. or R.C.E. No. 6623  
 Title *Deputy County Surveyor*

County Surveyor's Comment \_\_\_\_\_

**DA13F2**



#### LEGEND

⊙ 2" BRASS DISC CITY MONUMENT WITH A PUNCH MARK  
IN A STANDARD MONUMENT WELL

+ SET REFERENCE CROSS

#### NOTE:

THE EXISTING MONUMENT AS SHOWN IS  
REFERENCED BY STRAIGHT LINES BETWEEN  
RP-1 TO RP-3 AND RP-2 TO RP-4.