

LEGEND

- STANDARD CITY MONUMENT TO BE SET PER:
 - R1 TRACT 9318
 - R2 TRACT 9324
- STANDARD CITY MONUMENT SET AND STAMPED "LS 5106"
- PRIVATE INGRESS AND EGRESS EASEMENT
- PRIVATE UTILITY EASEMENT
- PUBLIC UTILITY EASEMENT
- PRIVATE YARD EASEMENT
- SIDEWALK EASEMENT
- TOTAL OF DIMENSIONS ALONG THIS LINE OR CURVE
- RADIAL BEARING
- MONUMENT TO MONUMENT DIMENSIONS
- PROPERTY LINE
- STREET CENTERLINE OR MONUMENT LINE
- EXISTING EASEMENT LINE
- NEW OR PROPOSED EASEMENT
- DISTINCTIVE BORDER LINE

NOTES

- DISTANCES AND DIMENSIONS ARE SHOWN IN FEET AND DECIMALS THEREOF.
- THE DISTINGUISHING BORDER DENOTES THE BOUNDARY OF THE SUBDIVISION.
- THE AREA WITHIN THE DISTINGUISHING BORDER IS 4.44 ACRES MORE OR LESS.
- LOTS A, B AND C TO BE CONVEYED TO THE HOMEOWNERS ASSOCIATION AS COMMON AREA.

BASIS OF BEARINGS

THE BEARING NORTH 19°30'02" EAST ALONG THE MONUMENT LINE OF GARITY WAY AS SHOWN ON THE MAP OF TRACT 9318 FILED IN BOOK 741 OF MAPS AT PAGE 19, SANTA CLARA COUNTY RECORDS, WAS TAKEN AS THE BASIS OF BEARINGS SHOWN HEREON.

TRACT No. 9321

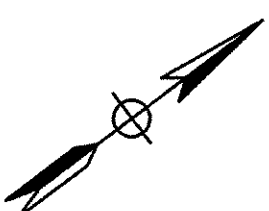
THE GREENS
SANTA CLARA, CALIFORNIA

CONSISTING OF 3 SHEETS

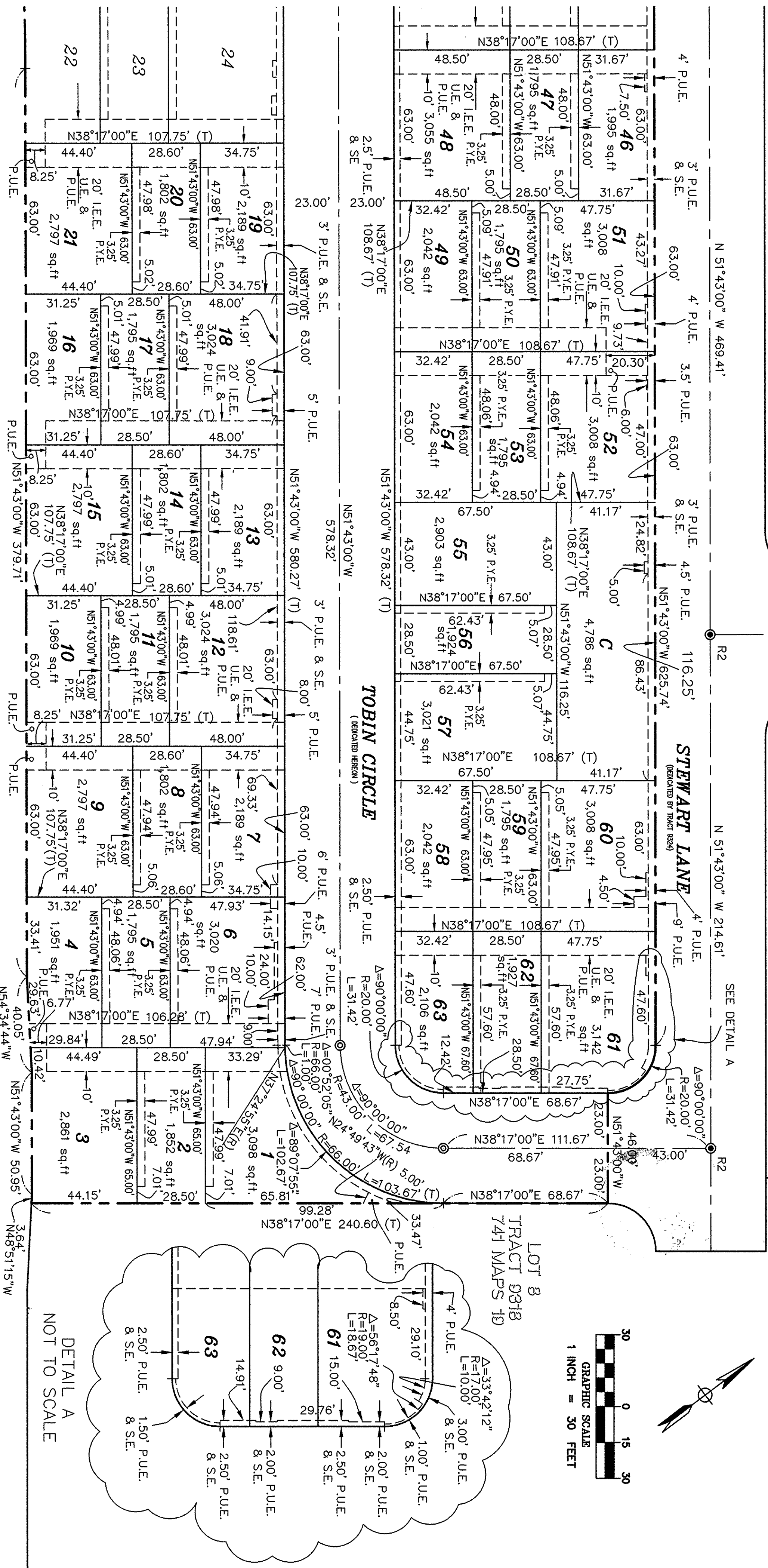
BEING A SUBDIVISION OF LOT 10 AS SHOWN ON THAT CERTAIN MAP ENTITLED TRACT 9318 "RIVERMARK", FILED FOR RECORD IN BOOK 741 OF MAPS, PAGES 19 THROUGH 27, SANTA CLARA COUNTY RECORDS, LYING ENTIRELY WITHIN THE CITY & COUNTY OF SANTA CLARA, CALIFORNIA

OCTOBER, 2001

HMH
HMH, Incorporated
Civil Engineers • Planners • Surveyors
8750 CARLAND ROAD, SUITE 200
F.O. BOX 67850 SAN JOSE, CALIFORNIA 95161-8500
408 467-2200 FAX 408 467-2222



SEE SHEET 2



DETAIL A
NOT TO SCALE

AGNEW ROAD

15975327

3