

CORNER RECORD

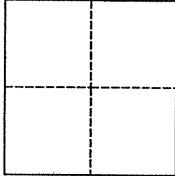
Agency Index BK 102 PG 82Document Number CR 10537City of CASTRO VALLEYCounty of ALAMEDA

, California

Brief Legal Description VR23R6 (SUMMIT COURT NORTH OF ELROD DRIVE)

CORNER TYPE

COORDINATES (Optional)

Government Corner ☒ ControlMeander ☐ PropertyRancho ☐ Other

N. _____

E. _____

Elevation _____

Units _____

Metric ☐U.S. Survey Foot ☒

Horizontal Datum _____

Zone _____ Epoch Date _____

Vertical Datum _____

☐ Complies with Public Resources Code §§8801-8819☐ Complies with Public Resources Code §§8890-8902PLS Act Ref.: ☒ 8765(d)☐ 8771☐ 8773☐ Other:Corner/ Monument: ☐ Left as found☐ Established☐ Rebuilt☒ Pre-Construction☐ Found and tagged☐ Reestablished☐ Referenced☐ Post-Construction

Narrative of corner identified and monument as found, set, reset, replaced, or removed:

☒ See sheet #2 for description(s):

MON WELL LID WAS DOWN 1" IN AC. FOUND 5/16" BRASS PIN SET IN CONCRETE FOR COUNTY MON IN MON WELL, DOWN 9", SET FOUR CUT "X" REFERENCES AND TIE TO WS34S7 AS SHOWN ON SHEET 2.

SURVEYOR'S STATEMENT

This Corner Record was prepared by me or under my direction in conformance with

the Professional Land Surveyors' Act on SEPTEMBER 8, 2017Signed [Signature] P.L.S. or R.C.E. No. LS 5837

COUNTY SURVEYOR'S STATEMENT

This Corner Record was received 4 AUGUST 2017and examined and filed 17 OCTOBER 2017Signed Michael Rubner P.L.S. or R.C.E. No. 6843Title COUNTY SURVEYOR

County Surveyor's Comment

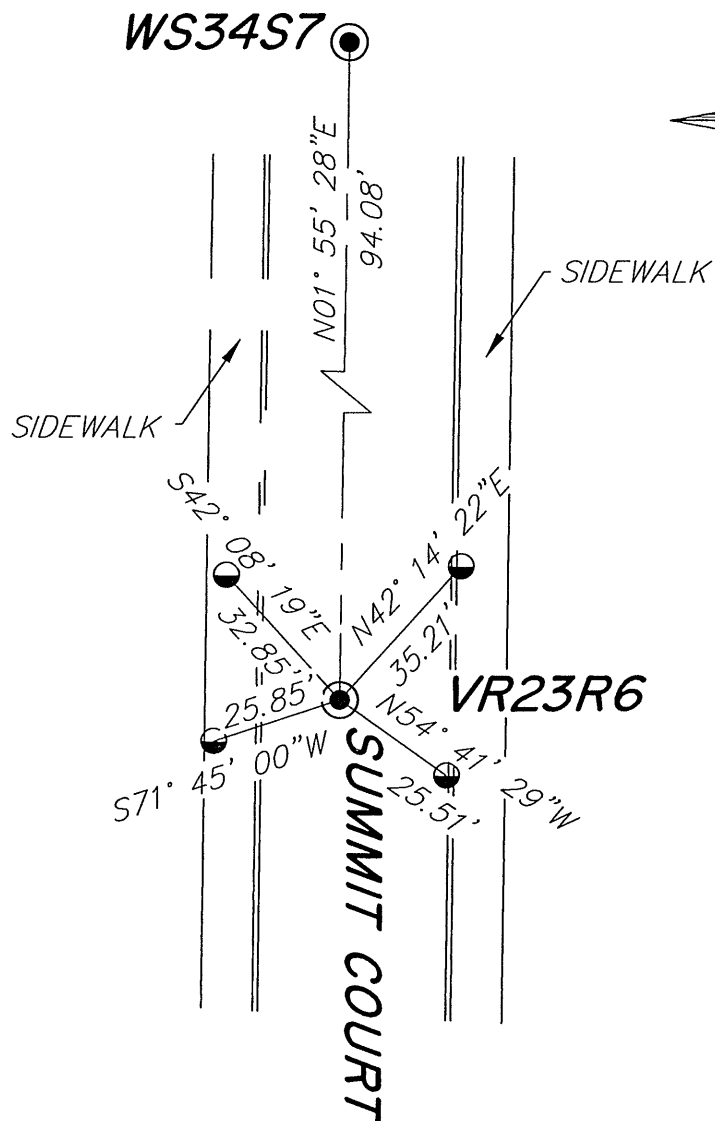
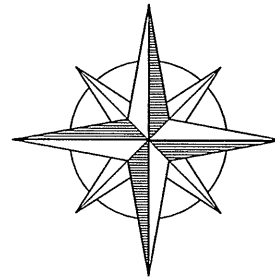


SPEC 2322

VR23R6

NO SCALE

N

**LEGEND**

● FOUND ALAMEDA COUNTY MONUMENT
AS NOTED ON SHEET 1

● SET CUT "X" UNLESS
OTHERWISE SHOWN

AA##A# ALAMEDA COUNTY MONUMENT ID

NOTE THAT BEARINGS ARE
APPROXIMATE AND ARE TO
BE USED FOR ANGLE
CALCULATIONS ONLY.