

CHess PIECES

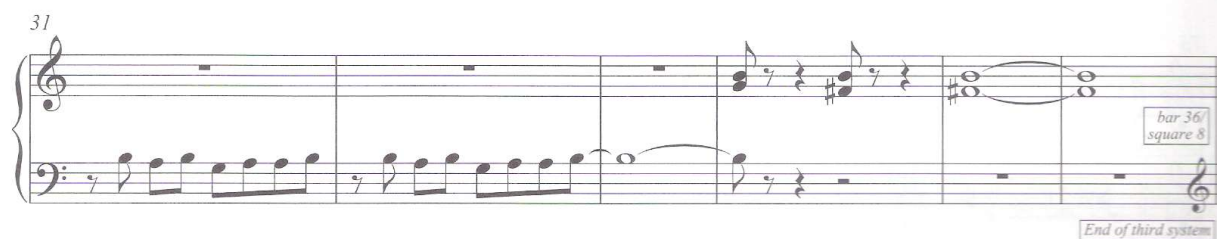
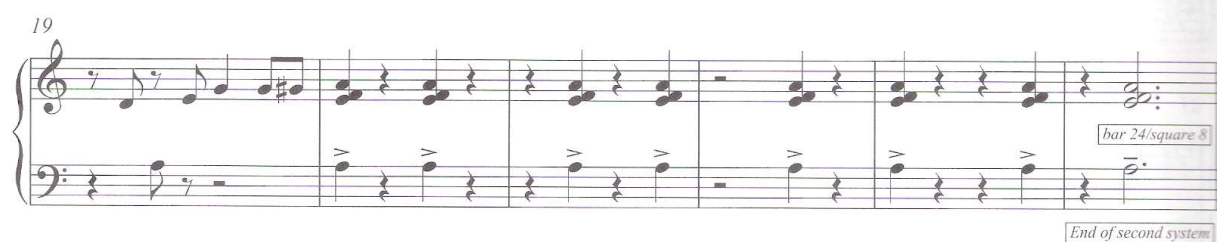
piano solo
by
john cage

EDITION PETERS

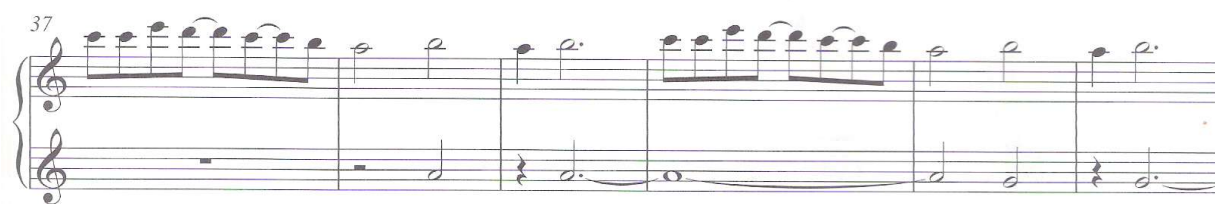
Edition No. 68110

Chess Pieces

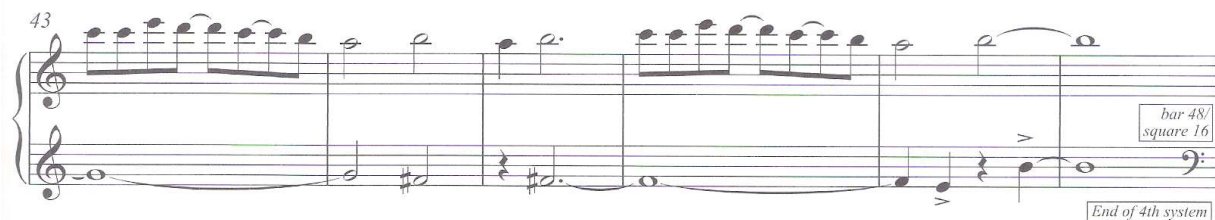
John Cage
(1944)



37



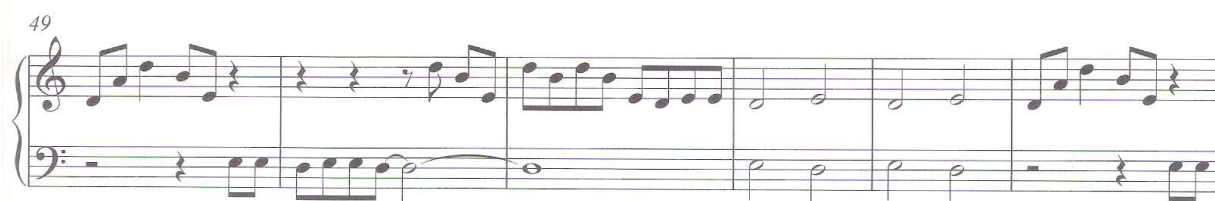
43



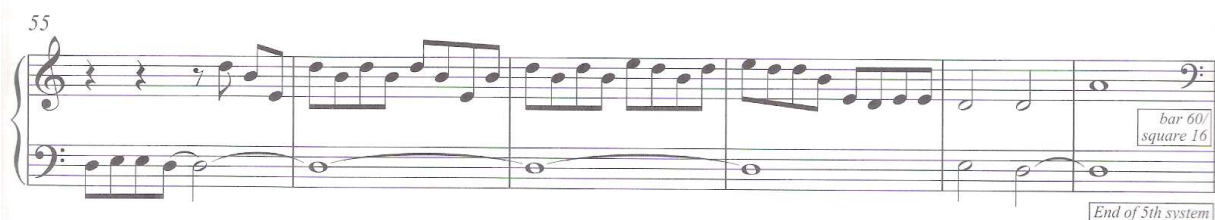
bar 48/
square 16

End of 4th system

49



55



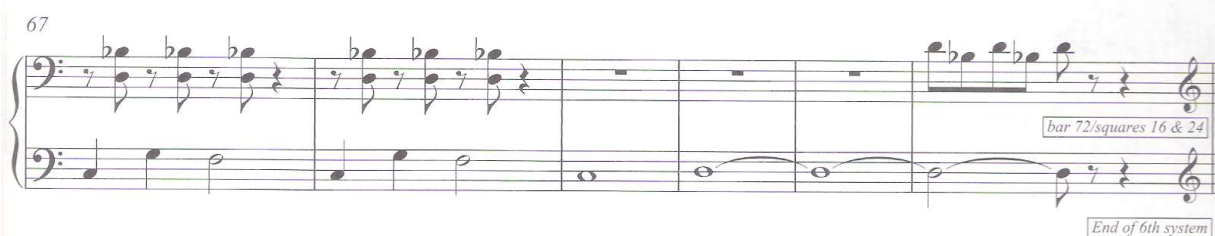
bar 60/
square 16

End of 5th system

61



67



bar 72/squares 16 & 24

End of 6th system

73



79

bar 84/square 24

End of 7th system

This system contains measures 79 through 84. The treble clef staff begins with a whole rest in measure 79, followed by eighth-note patterns in measures 80-82, and a quarter-note pattern in measure 83. The bass clef staff features a half-note pattern in measure 79, followed by eighth-note patterns in measures 80-82, and a whole rest in measure 83. A box at the end of the system indicates 'bar 84/square 24'.

85

This system contains measures 85 through 90. The treble clef staff has a continuous eighth-note pattern throughout. The bass clef staff has whole rests in measures 85-86, followed by a half-note pattern in measure 87, and whole notes in measures 88-90.

91

bar 96/square 24

End of 8th system

This system contains measures 91 through 96. The treble clef staff has a continuous eighth-note pattern. The bass clef staff has a half-note pattern in measure 91, followed by whole notes in measures 92-96. A box at the end of the system indicates 'bar 96/square 24'.

97

This system contains measures 97 through 102. The treble clef staff features a half-note pattern in measure 97, followed by quarter-note patterns in measures 98-100, and a half-note pattern in measure 101. The bass clef staff has whole rests in measures 97-98, followed by quarter-note patterns in measures 99-102.

103

bar 108/square 32

End of 9th system

This system contains measures 103 through 108. The treble clef staff has a half-note pattern in measure 103, followed by quarter-note patterns in measures 104-106, and a half-note pattern in measure 107. The bass clef staff has quarter-note patterns in measures 103-107, followed by a half-note pattern in measure 108. A box at the end of the system indicates 'bar 108/square 32'.

109

This system contains measures 109 through 114. The treble clef staff has whole notes in measures 109-112, followed by a half-note pattern in measure 113, and a quarter-note pattern in measure 114. The bass clef staff has eighth-note patterns throughout.

115

bar 120/square 32

End of 10th system

This system contains measures 115 through 120. The treble clef staff has whole notes in measures 115-116, followed by a half-note pattern in measure 117, and a quarter-note pattern in measure 118. The bass clef staff has eighth-note patterns in measures 115-117, followed by a half-note pattern in measure 118, and eighth-note patterns in measures 119-120. A box at the end of the system indicates 'bar 120/square 32'.

This image shows a handwritten musical score on ten systems of staves. The notation includes various musical symbols such as notes, rests, and bar lines. The score is organized into systems, with some systems containing multiple staves. Key annotations include:

- bar 132/square 32**: Located at the end of the second system.
- End of 11th system**: Located at the end of the third system.
- bar 144/square 40**: Located at the end of the fourth system.
- End of 12th system**: Located at the end of the fifth system.
- bar 156/square 40**: Located at the end of the sixth system.
- End of 13th system**: Located at the end of the seventh system.

The notation is written in black ink on white paper. The staves are connected by a vertical line on the left. The music appears to be a single melodic line with some accompaniment in the lower staves of some systems.

163

bar 168/
squares 40 & 48

End of 14th system

169

175

bar 180/
square 48

End of 15th system

181

186

bar 192/square 48

End of 16th system

193

199

bar 204/
squares 48 & 56

End of 17th system

205

End of system 18

211

bar 216/
square 56

End of system 18

217

End of system 19

223

bar 228/square 56

End of 19th system

229

235

bar 240/square 64

End of 20th system

241

247

bar 252/square 64

End of 21st system

253

259

fine

bar 264/square 64

End of system 22