

CORNER RECORD

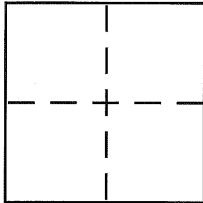
Bk 42 Pg 77

Document Number CR 4741

City of BERKELEY

County of ALAMEDA, California

Brief Legal Description BERKELEY MONUMENT B 2317



CORNER TYPE

Government Corner ☐ Control ☒
Meander ☐ Property ☐
Rancho ☐ Other ☐
Date of Survey 11-3-2011

COORDINATES (Optional)

N. _____
E. _____
Zone _____ NAD27 ☐ NAD83 ☐
NAD83 Epoch _____
Elev. _____
Vert. Datum: NGVD29 ☐ NAVD88 ☐
Meas. Units: Metric ☐ Imperial ☐

Corner - Left as found ☐ Found and tagged ☐ Established ☐ Reestablished ☒ Rebuilt ☐

Identification and type of corner found: Evidence used to identify or procedure used to establish or reestablish the corner:

RE-SET AFTER STREET RECONSTRUCTION.

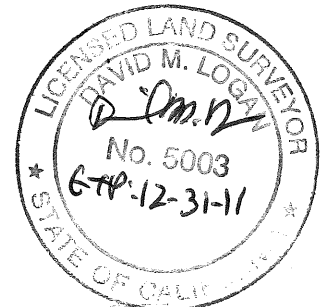
A description of the physical condition of the monument as found and as set or reset:

RE-SET MON B 2317 - CUT CROSS IN SIDEWALK FROM
RP'S AS SHOWN ON PAGE 2.

SURVEYOR'S STATEMENT

This Corner Record was prepared by me or under my direction in conformance with the Land Surveyor's Act on NOVEMBER 3 2011

Signed [Signature] P.L.S or R.C.E. No. PLS 5003



COUNTY SURVEYOR'S STATEMENT

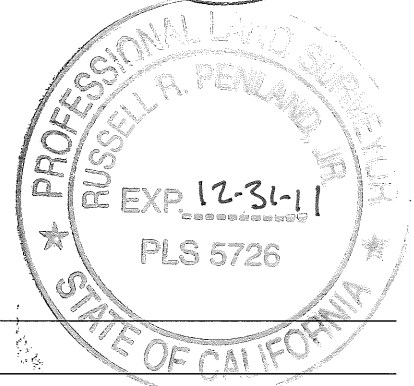
This Corner Record was received 11-28-11

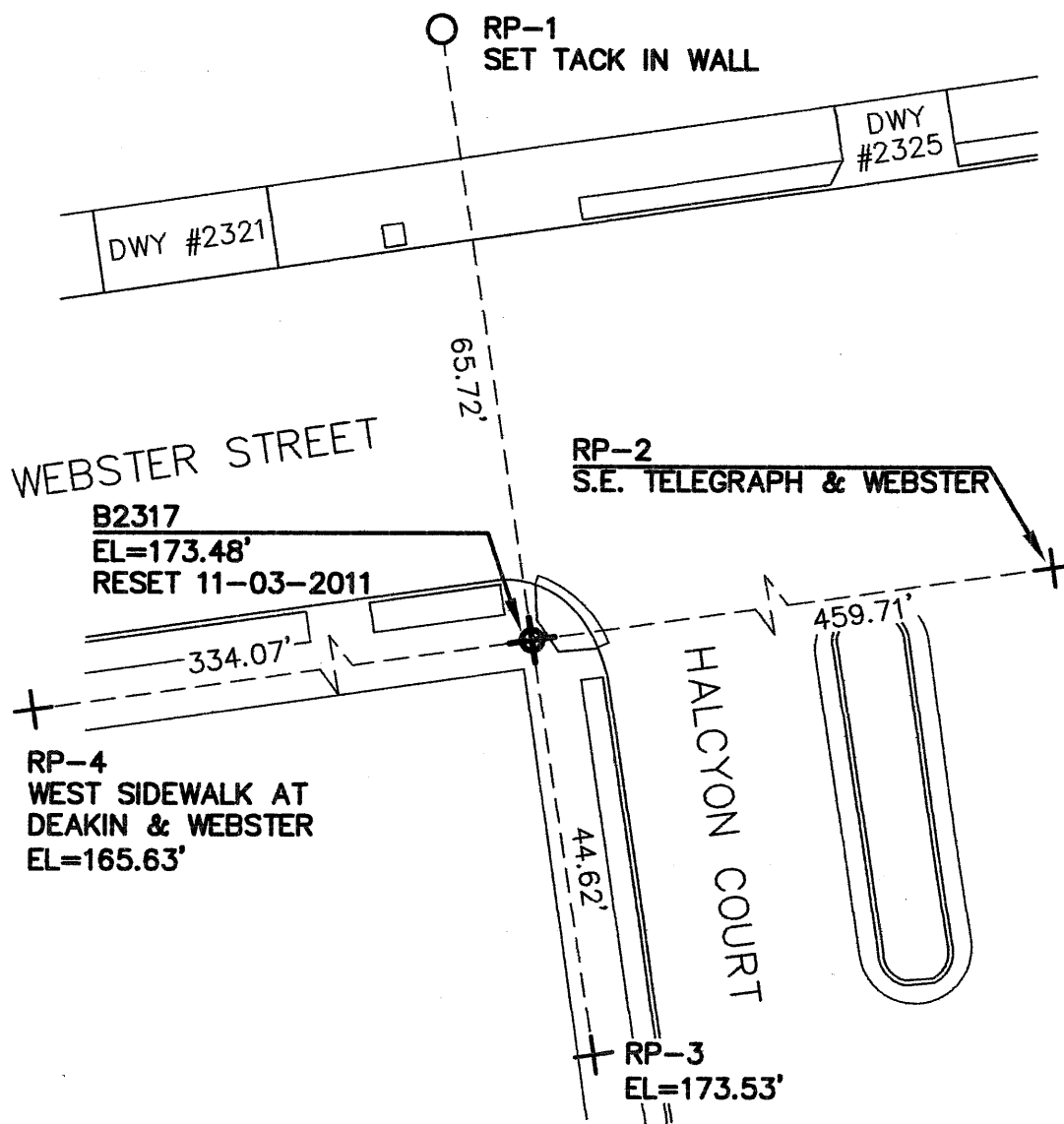
and examined and filed 12-16-11

Signed [Signature] P.L.S or R.C.E. No. 5726

Title COUNTY SURVEYOR

County Surveyor's Comment _____





NOTE:
THE EXISTING MONUMENT AS SHOWN IS
REFERENCED BY STRAIGHT LINES BETWEEN
RP-1 TO RP-3 AND RP-2 TO RP-4.

LEGEND

- ⊕ SET CROSS ON SIDEWALK
- + REFERENCE CROSS SET IN SIDEWALK
- SET TACK

