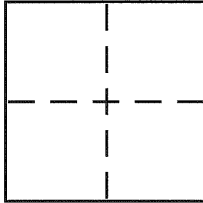


CORNER RECORDDocument Number CR 5845City of UNINCORPORATED CASTRO VALLEYCounty of ALAMEDA, CaliforniaBrief Legal Description POST MONUMENT PRESERVATION SURVEY**CORNER TYPE**

Government Corner ☐ Control ☒
 Meander ☐ Property ☐
 Rancho ☐ Other ☐
 Date of Survey SEPT 18, 2013

COORDINATES (Optional)

N. _____
 E. _____
 Zone _____ NAD27 ☐ NAD83 ☐
 NAD83 Epoch _____
 Elev. _____
 Vert. Datum: NGVD29 ☐ NAVD88 ☐
 Meas. Units: Metric ☐ Imperial ☐

Corner - Left as found ☐ Found and tagged ☐ Established ☒ Reestablished ☐ Rebuilt ☐

Identification and type of corner found: Evidence used to identify or procedure used to establish or reestablish the corner:

IN COMPLIANCE WITH SECTION 8771 OF THE PROFESSIONAL LAND SURVEYORS
ACT, THIS CORNER RECORD IS BEING FILED TO ESTABLISH THE POSITION OF
AN EXISTING MONUMENT^{SUBSEQUENT} TO STREET OR HIGHWAY RECONSTRUCTION.

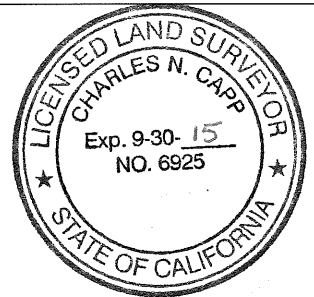
A description of the physical condition of the monument as found and as set or reset:

SEE SKETCH

SURVEYOR'S STATEMENT

This Corner Record was prepared by me or under my direction in conformance with the Land Surveyor's Act on OCTOBER 9 2013.

Signed Charles N. Capp P.L.S. or R.C.E. No. L6925

**COUNTY SURVEYOR'S STATEMENT**

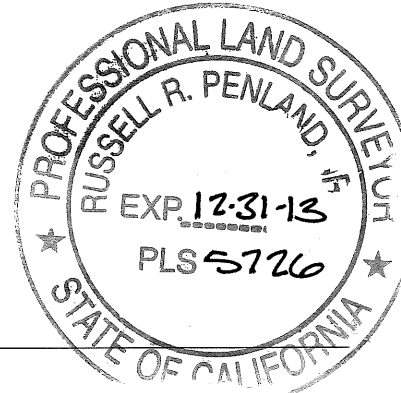
This Corner Record was received 10-14-13

and examined and filed 10-27-13

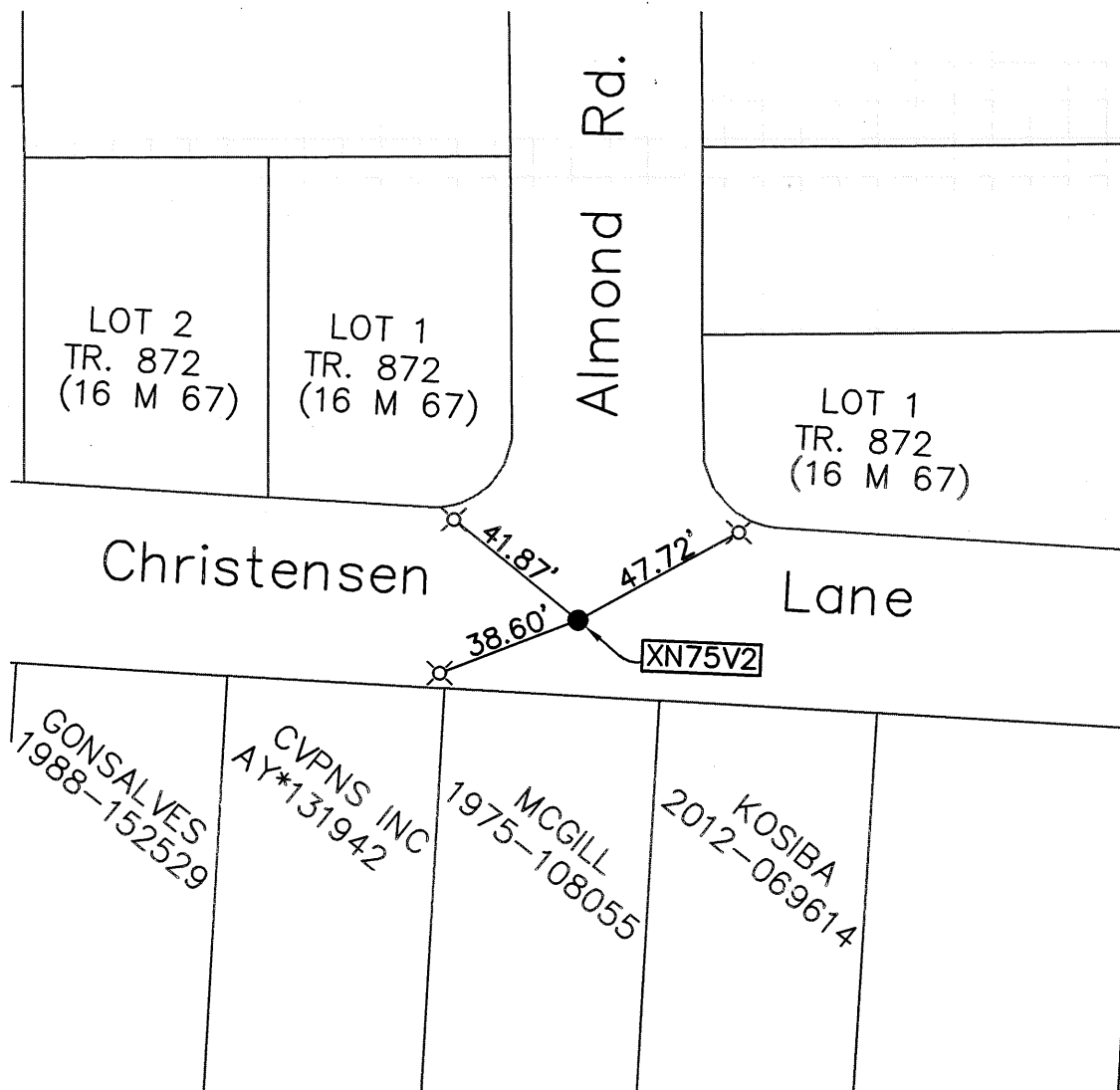
Signed Russell R. Penland P.L.S. or R.C.E. No. 5726

Title County Surveyor

County Surveyor's Comment _____



XN75VZ



SCALE 1" = 50'

LEGEND

● FOUND STANDARD COUNTY WELL MONUMENT

⊗ SET LEAD AND TACK TAGGED LS 6925

AA##A#

COUNTY MONUMENT ID