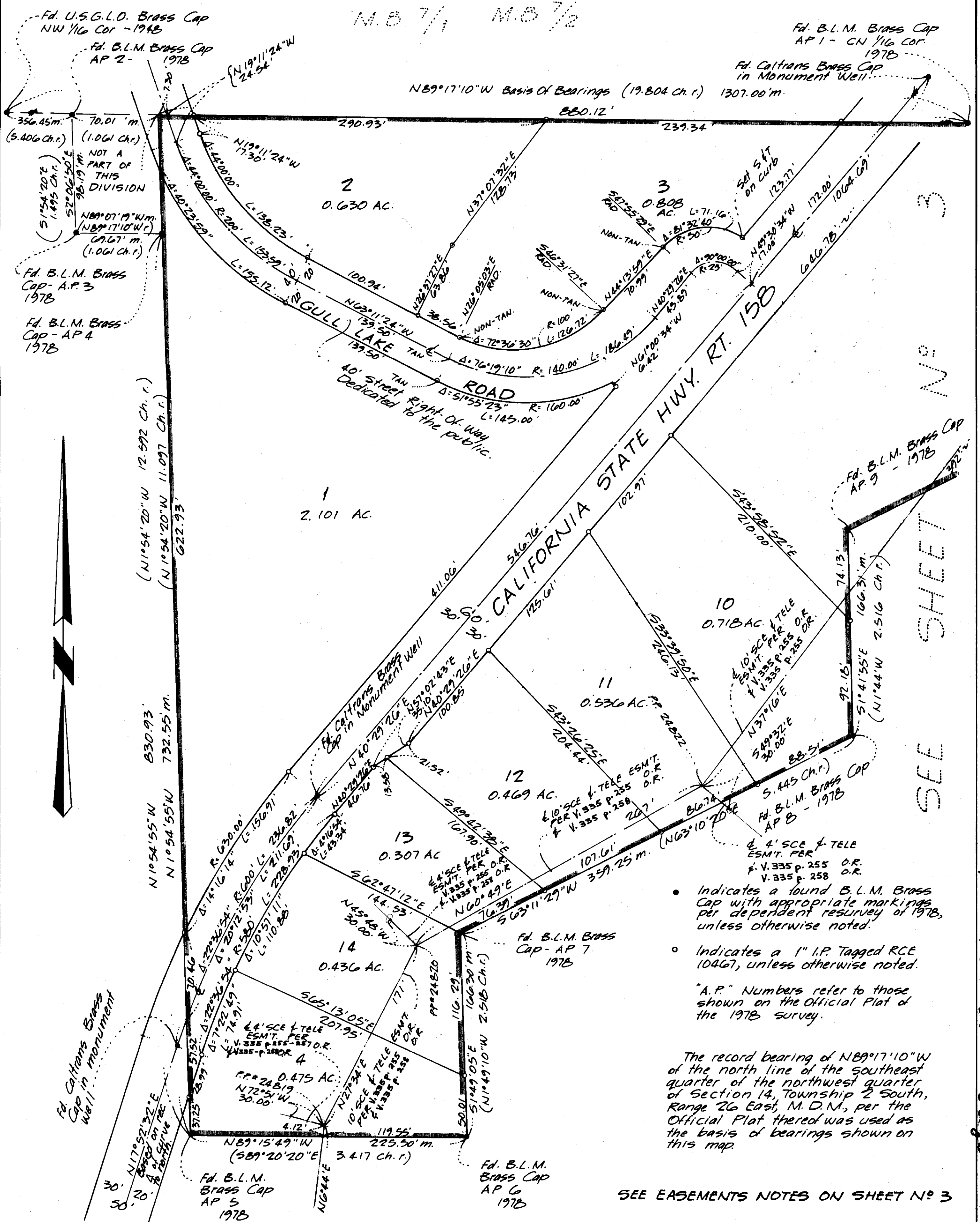


SHEET 2 OF 3 SHEETS

IN THE COUNTY OF MONO, STATE OF CALIFORNIA,
BEING A DIVISION OF A PORTION OF THE
SOUTHEAST QUARTER OF THE NORTHWEST
QUARTER OF SECTION 14, TOWNSHIP 2
SOUTH, RANGE 26 EAST, M.D.M. 4



SEE SHEETS
178
227
W. 178
W. 227

ρ/m $\forall \alpha$ $\rho_{\alpha\alpha}$ \mathbb{R}^A