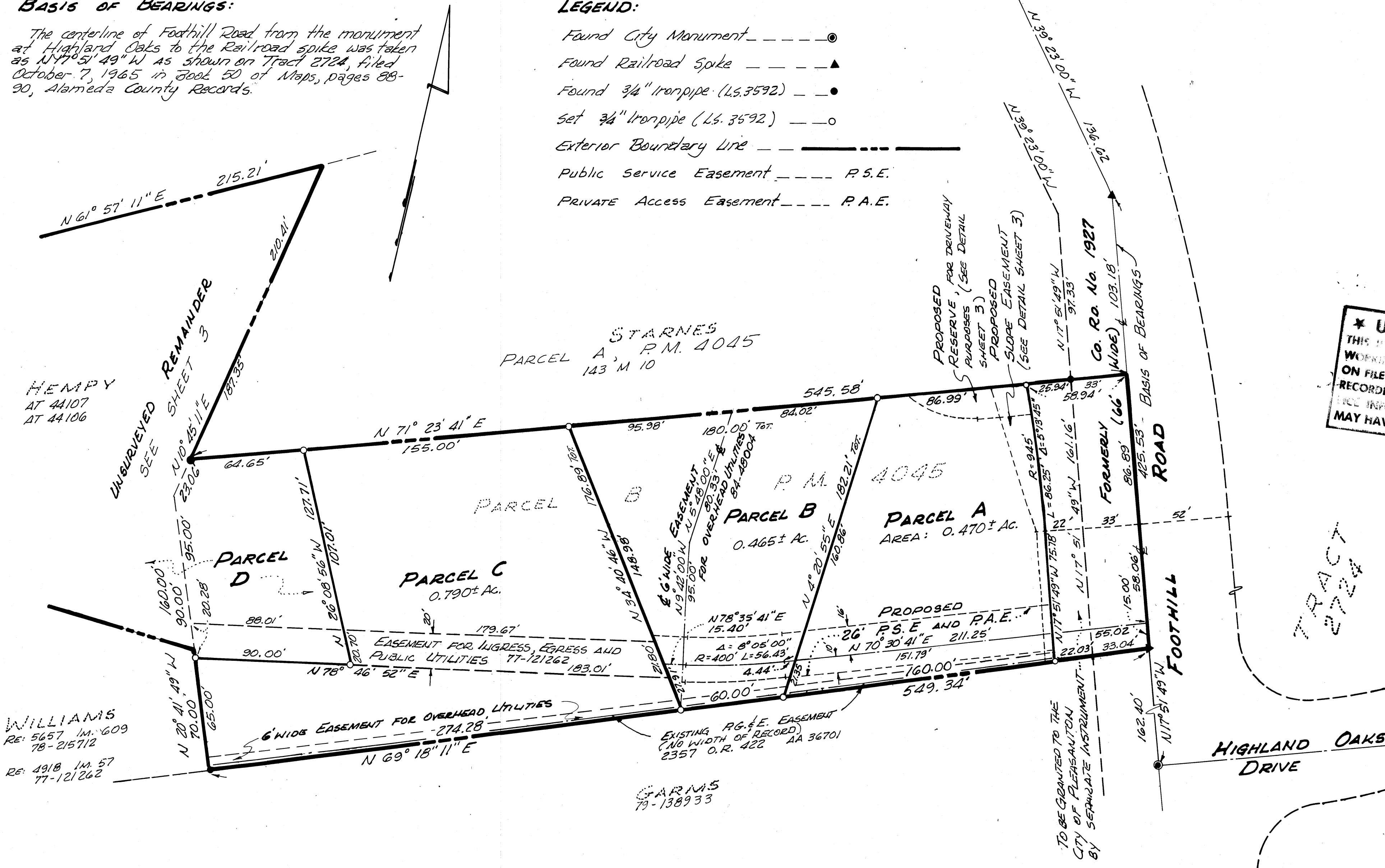


BASIS OF BEARINGS:

The centerline of Foothill Road from the monument at Highland Oaks to the Railroad spike was taken as N 77° 51' 49" W as shown on Tract 2724, filed October 7, 1965 in Book 50 of Maps, Pages 88-90, Alameda County Records.

LEGEND:

- Found City Monument ————●———
- Found Railroad Spike ————▲———
- Found 3/4" Ironpipe (L.S. 3592) ————●———
- Set 3/4" Ironpipe (L.S. 3592) ————○———
- Exterior Boundary Line ———— ————
- Public Service Easement ———— P.S.E.
- Private Access Easement ———— P.A.E.



PARCEL MAP 4313
CITY OF PLEASANTON
ALAMEDA COUNTY, CALIFORNIA
M.S. 84-19

SCALE: 1" = 40' APRIL, 1984

Gilbert Barbee LAND SURVEYOR
147 BERNAL AVENUE PLEASANTON, CA.

85-041433 SHEET 2 OF 3 SHEETS

filed 2-27-85

152/27

62/751
PM 4313
MAP BK 152 PG 27