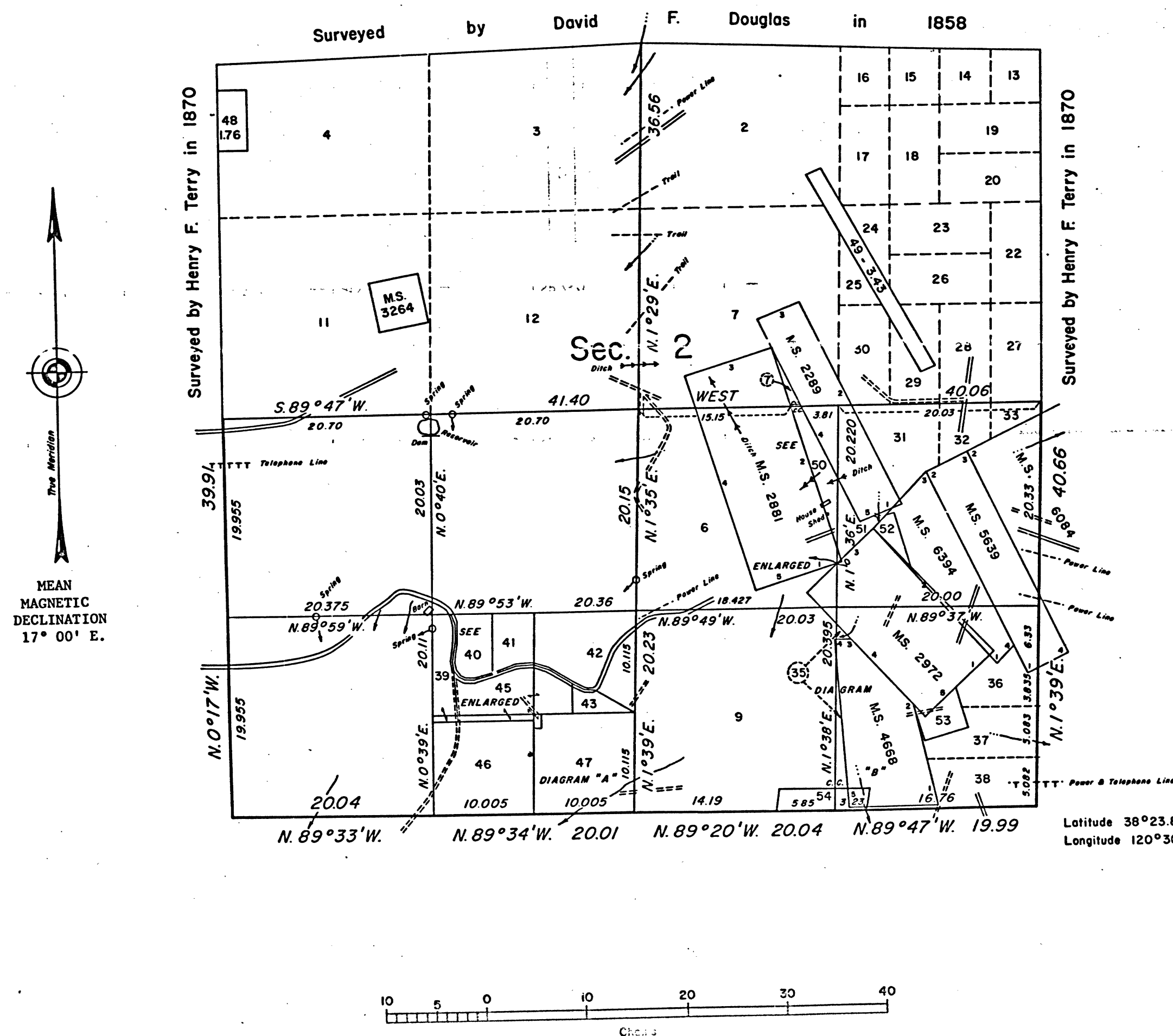


TOWNSHIP 6 NORTH, RANGE 13 EAST, OF THE MOUNT DIABLO MERIDIAN, CALIFORNIA.

DEPENDENT RESURVEY AND SURVEY

MINERAL LOTS AND SURVEYS

LOT NO.	M.S. NO.	NAME
62	2289	Wide West Quartz Mine
71	2881	Water Lily Quartz Mine
75	2972	Blazing Star Quartz Mine
	4668	Matrimony Mine
44	5639	Bortolo
	6084	Bortolo Annex
6263	6394	Bummerville Lode



A history of surveys is contained in the field notes.

This plat represents the dependent resurvey of a portion of the subdivisional lines and a portion of the mineral surveys, designed to restore the corners in their true original location according to the best available evidence, and the surveys of the subdivision and lots 39, 40, 41, 42, 43, 45, 46 and 47 in section 2, T. 6 N., R. 13 E., Mount Diablo Meridian, California.

Except as indicated, the lottings and areas are as shown on Township Plat approved May 2, 1871, Township Diagram dated October 15, 1875, Mineral Diagrams dated February 20, 1880, December 8, 1886, October 4, 1887, October 11, 1889, December 21, 1889, October 9, 1890, September 17, 1891, January 29, 1895, Supplemental Plats accepted October 1, 1957, October 17, 1958, and approved mineral records.

The resurvey and survey were executed by Richard L. Oakes, Supervisory Land Surveyor, and William W. Finnicum, Cadastral Surveyor, January 11 to April 25, 1972, pursuant to Special Instructions dated December 7, 1971, which provide for the surveys under Group No. 601, California.

UNITED STATES DEPARTMENT OF THE INTERIOR
BUREAU OF LAND MANAGEMENT
Washington, D.C. November 4, 1975

This plat is strictly conformable to the approved field notes, and the survey, having been correctly executed in accordance with the requirements of law and the regulations of this Bureau, is hereby accepted.

For the Director

Bernard W. Finn
Chief, Division of Cadastral Survey

41-531-J

BLM 293