

CORNER RECORD

97-68 6 Cr 044

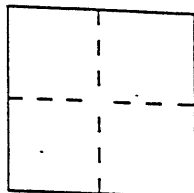
Document Number

577

City of OAKLAND

County of ALAMEDA

Brief Legal Description PARCEL C, PM 2409, 105 PM 37



CORNER TYPE

Government Corner ☐

Control ☐

Meander ☐

Property ☒

Rancho ☐

Other ☐

Date of Survey 6-24-92

COORDINATES (Optional)

N. _____

E. _____

Zone _____ Datum _____

Elev. _____

Corner — Left as found ☒ Found and tagged ☐ Established ☒ Reestablished ☐ Rebuilt ☐

Identification and type of corner found: Evidence used to identify or procedure used to establish or reestablish the corner:

Found points as shown on reverse.

A description of the physical condition of the monument as found and as set or reset:

Set points as shown on reverse.

SURVEYOR'S STATEMENT

This Corner Record was prepared by me or under my direction in conformance with the Land Surveyors' Act on 3-22 1995.

Signed [Signature] L.S. or R.C.E. Number L.S. 7136

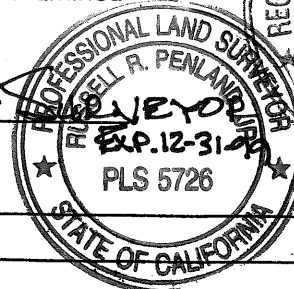
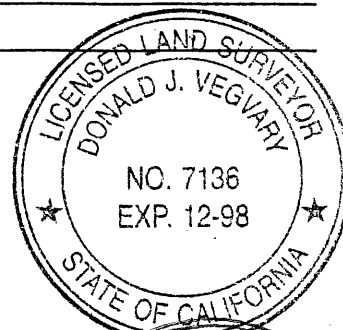
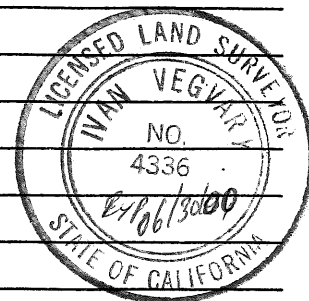
COUNTY SURVEYOR'S STATEMENT

This Corner Record was received 3-23 1995 and examined

and filed [Signature] 1997 DEPUTY

Signed [Signature] Title COUNTY

County Surveyor's Comment _____



CORNER RECORD

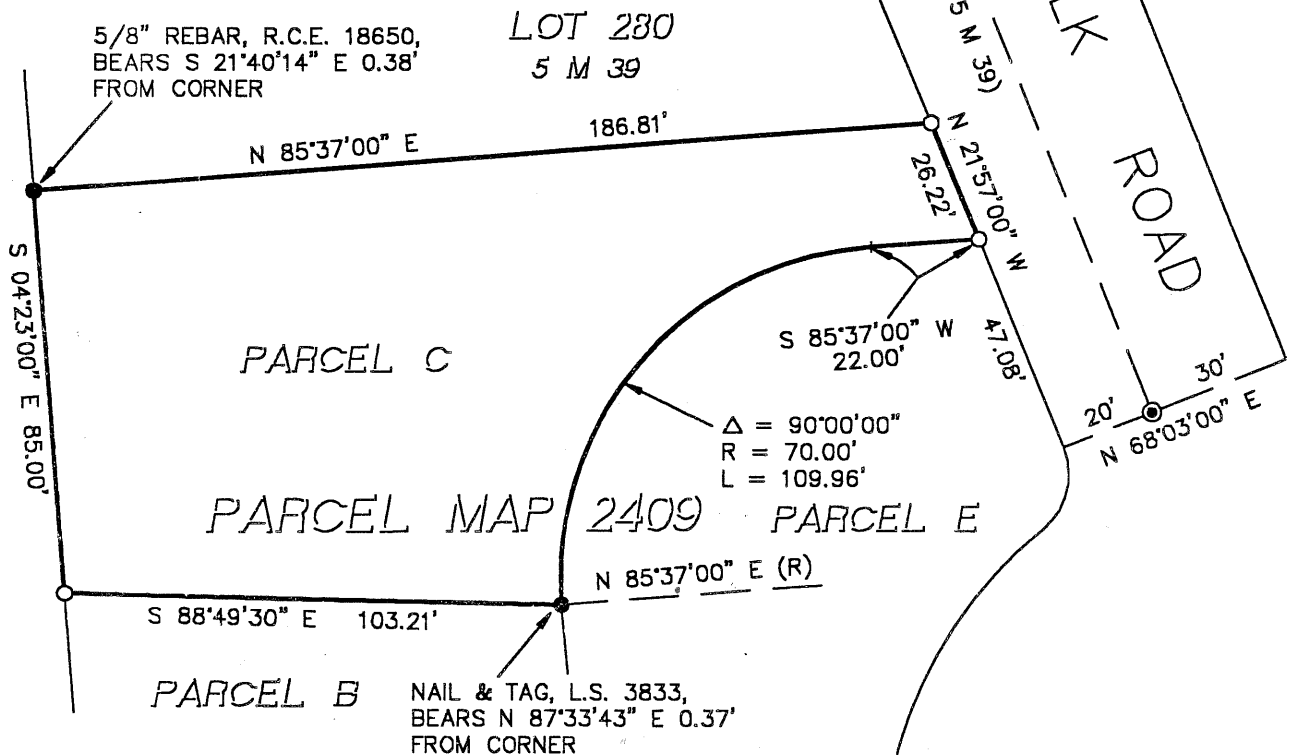
PARCEL C

PARCEL MAP 2409 - 105 PM 37

LEGEND

- FOUND STANDARD CONCRETE MONUMENT
- FOUND POINT AS NOTED
- SET 5/8" REBAR & CAP, R.C.E. 18546
- () RECORD DATA IN DISCREPENCY WITH FIELD

SCALE: 1"=40'



IVAN VEGVARY & ASSOCIATES
CIVIL ENGINEER - LAND SURVEYOR
40 TERRA TERESA
LAFAYETTE, CA 94549
(510) 947-1051