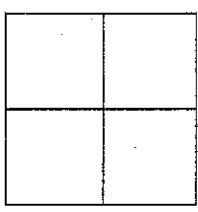


CORNER RECORD

Document Number CR 5520

City of OAKLAND County of ALAMEDA California

Brief Legal Description IRON PIN MONUMENT LOCATED WITHIN GRIZZLY PEAK BOULEVARD.(2SW80)



CORNER RECORD

COORDINATES
(Optional)

Government Corner ☐ Control ☒
Meander ☐ Property ☐
Rancho ☐ Other ☐
Date of Survey 4/3/13

N. 2142256 ±1'
E. 6064394 ±1'
Zone _____ Datum _____
Elev. _____

Corner — Left as found ☒ Found and tagged ☐ Established ☐ Reestablished ☐ Rebuilt ☐

Identification and type of corner found: Evidence used to identify or procedure used to establish or reestablish the corner:
FOUND IRON PIN MONUMENT LOCATED WITHIN GRIZZLY PEAK BOULEVARD.

714' NORTHERLY FROM THE INTERSECTION OF MARLBOROUGH TERRACE.

AS SHOWN ON CITY OF OAKLAND MONUMENT MAP, PAGE 344.

THIS POINT WAS REFERENCED PRIOR TO A CONSTRUCTION PROJECT IN THE VICINITY.

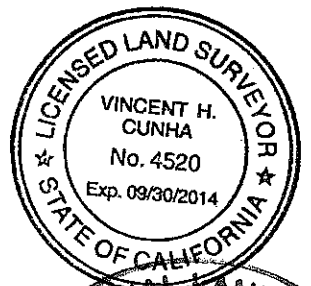
A description of the physical condition of the monument as found and as set or reset: _____
FOUND AND SET POINTS AS SHOWN ON PAGE 2.

THESE TIES ARE FOR THE PURPOSE OF PERPETUATING THE FOUND MONUMENTATION.

NO CLAIM IS MADE AS TO THE RELATIONSHIP OF THE POINTS OR LINES SHOWN HEREON
TO TRUE BOUNDARY LOCATIONS.

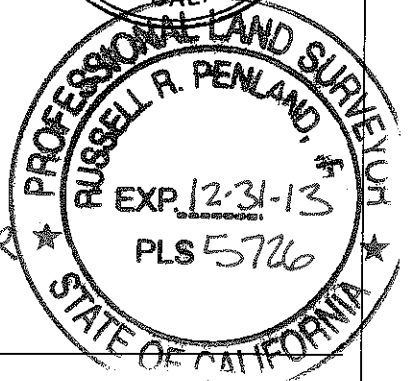
SURVEYOR'S STATEMENT

This Corner Record was prepared by me or under my direction in conformance with
the Land Surveyors' Act on APRIL 4, 20 13.
Signed Vincent H. Cunha L.S. Number LS 4520



COUNTY SURVEYOR'S STATEMENT

This Corner Record was received 4-26-13 and examined
and filed 7-10-2013.
Signed [Signature] Title County Surveyor



County Surveyor's Comment _____

YB26Q4



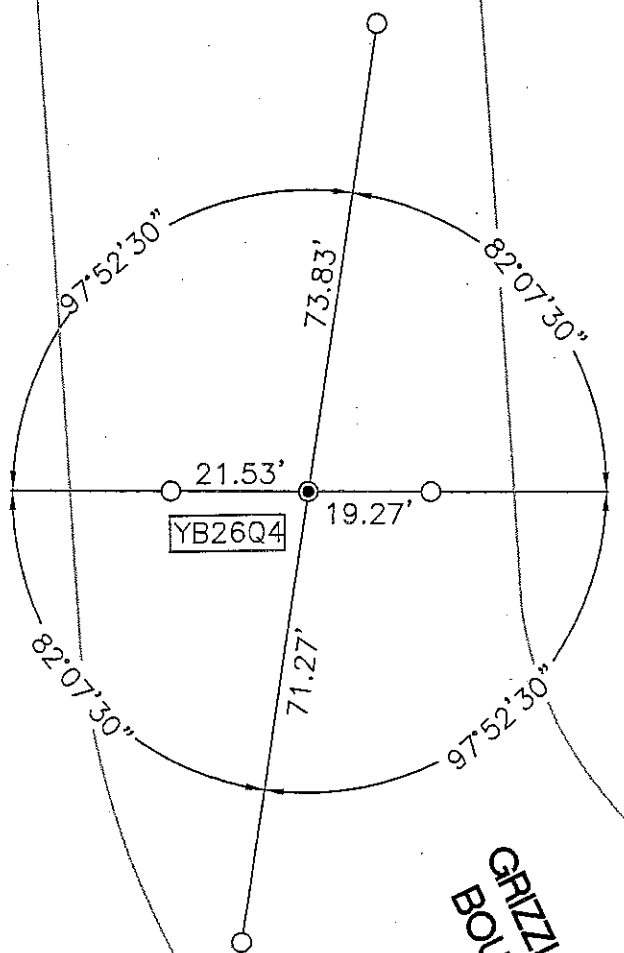
SCALE: 1"=30'

LEGEND

● FOUND IRON PIN IN MONUMENT WELL (2SW80)

○ SET 1/2" REBAR & BLANK CAP

AA###A# ALAMEDA COUNTY MONUMENT ID



GRIZZLY PEAK
BOULEVARD