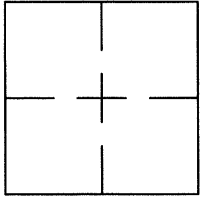


## CORNER RECORD

Document Number CR 7379City of OAKLANDCounty of ALAMEDA, CaliforniaBrief Legal Description WELL MONUMENT LOCATED WITHIN SKYLINE BLVD

## CORNER RECORD

Government Corner ☐ Control ☒  
 Meander ☐ Property ☐  
 Rancho ☐ Other ☐  
 Date of Survey 6/1/15

COORDINATES  
(Optional)

N. -2131800.64  
 E. -6073591.15  
 Zone \_\_\_\_\_ Datum \_\_\_\_\_  
 Elev. \_\_\_\_\_

Corner — Left as found ☒ Found and tagged ☐ Established ☐ Reestablished ☐ Rebuilt ☐

Identification and type of corner found: Evidence used to identify or procedure used to establish or reestablish the corner:  
FOUND IRON PIN IN WELL MONUMENT WEST OF 7875 SKYLINE BLVD.

AS SHOWN ON CITY OF OAKLAND MONUMENT MAP, PAGE 305.

NO CITY MONUMENT DESIGNATION NUMBER AT SUBJECT LOCATION.

THIS POINT WAS FOUND IN GOOD CONDITION AFTER A CONSTRUCTION PROJECT IN THE VICINITY.

A description of the physical condition of the monument as found and as set or reset: \_\_\_\_\_

FOUND POINTS AS SHOWN ON PAGE 2.

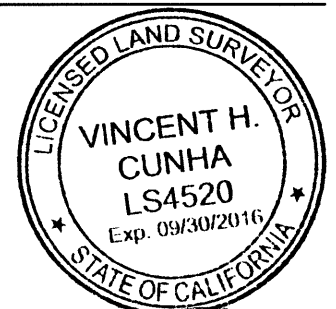
THESE TIES ARE FOR THE PURPOSE OF PERPETUATING THE FOUND MONUMENTATION.

NO CLAIM IS MADE AS TO THE RELATIONSHIP OF THE POINTS OR LINES SHOWN HEREON  
 TO TRUE BOUNDARY LOCATIONS.

## SURVEYOR'S STATEMENT

This Corner Record was prepared by me or under my direction in conformance with  
 the Land Surveyors' Act on JUNE 9, 20 15.

Signed Vincent H. Cunha L.S. Number LS 4520  
 VINCENT H. CUNHA

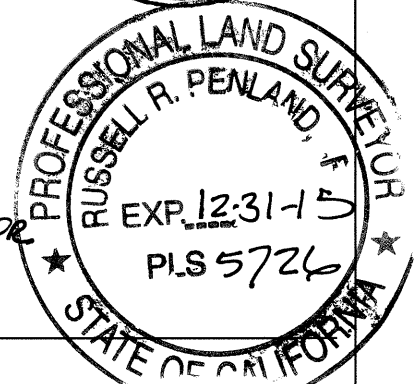


## COUNTY SURVEYOR'S STATEMENT

This Corner Record was received 6-11-2015 and examined  
 and filed 7-10-2015

Signed Russell R. Penland Title County Surveyor

County Surveyor's Comment SEE PRE-CONSTRUCTION CR 6594





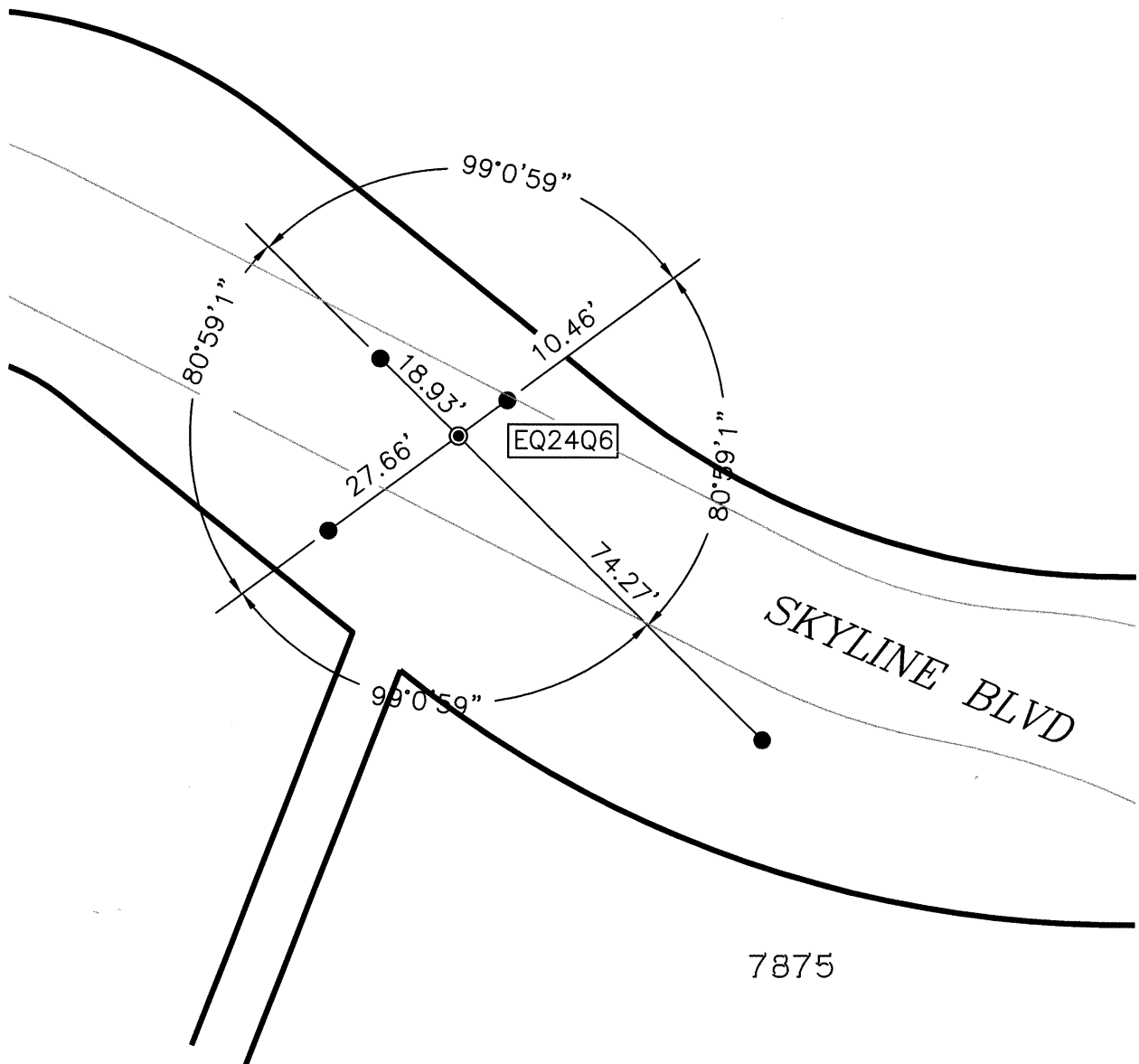
SCALE: 1"=30'

## LEGEND

⊙ FOUND IRON PIN IN MONUMENT WELL

● FOUND REBAR AND CAP

AA##A# ALAMEDA COUNTY MONUMENT ID



214072-SKYLINE-CR8-POST