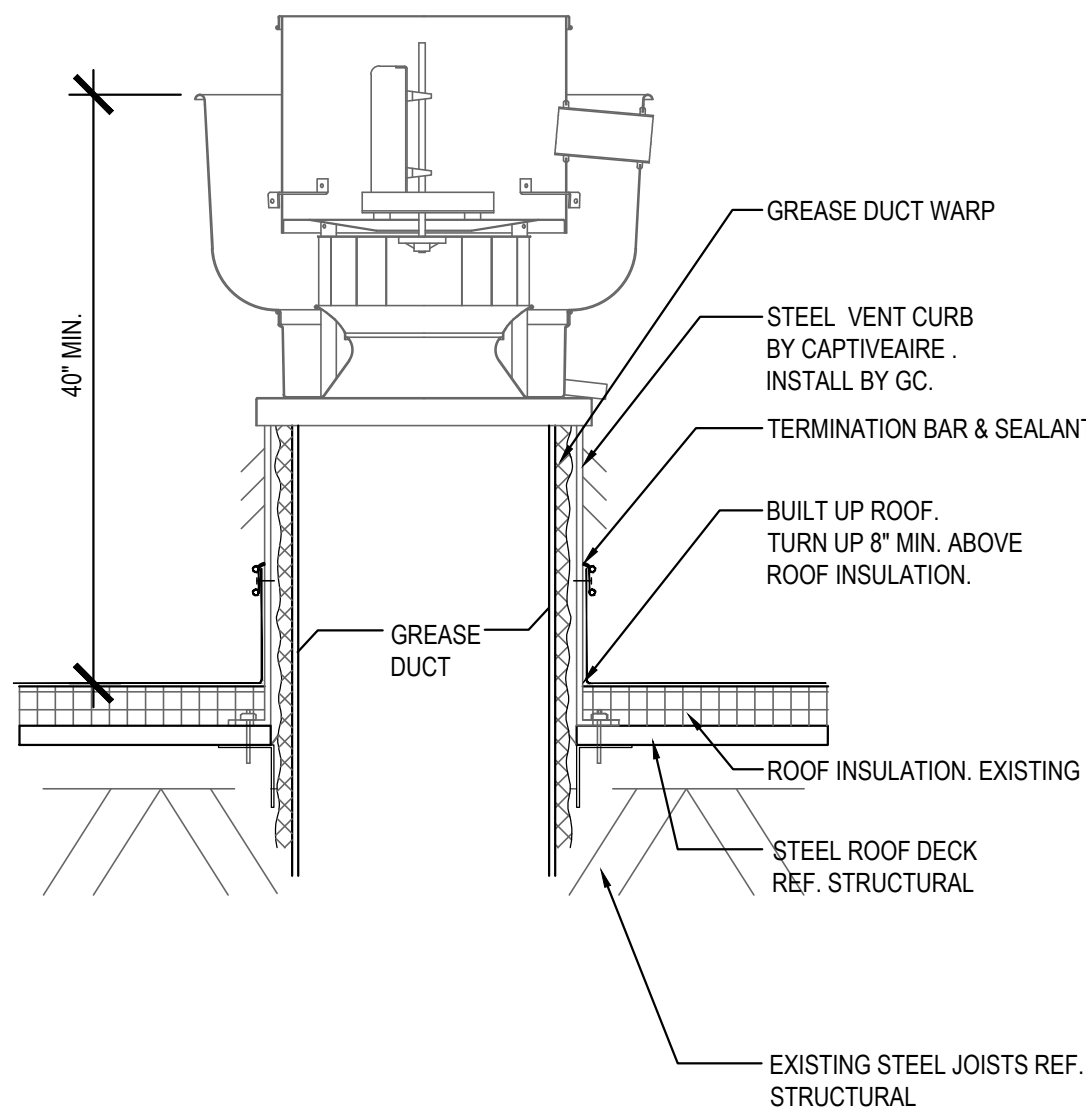
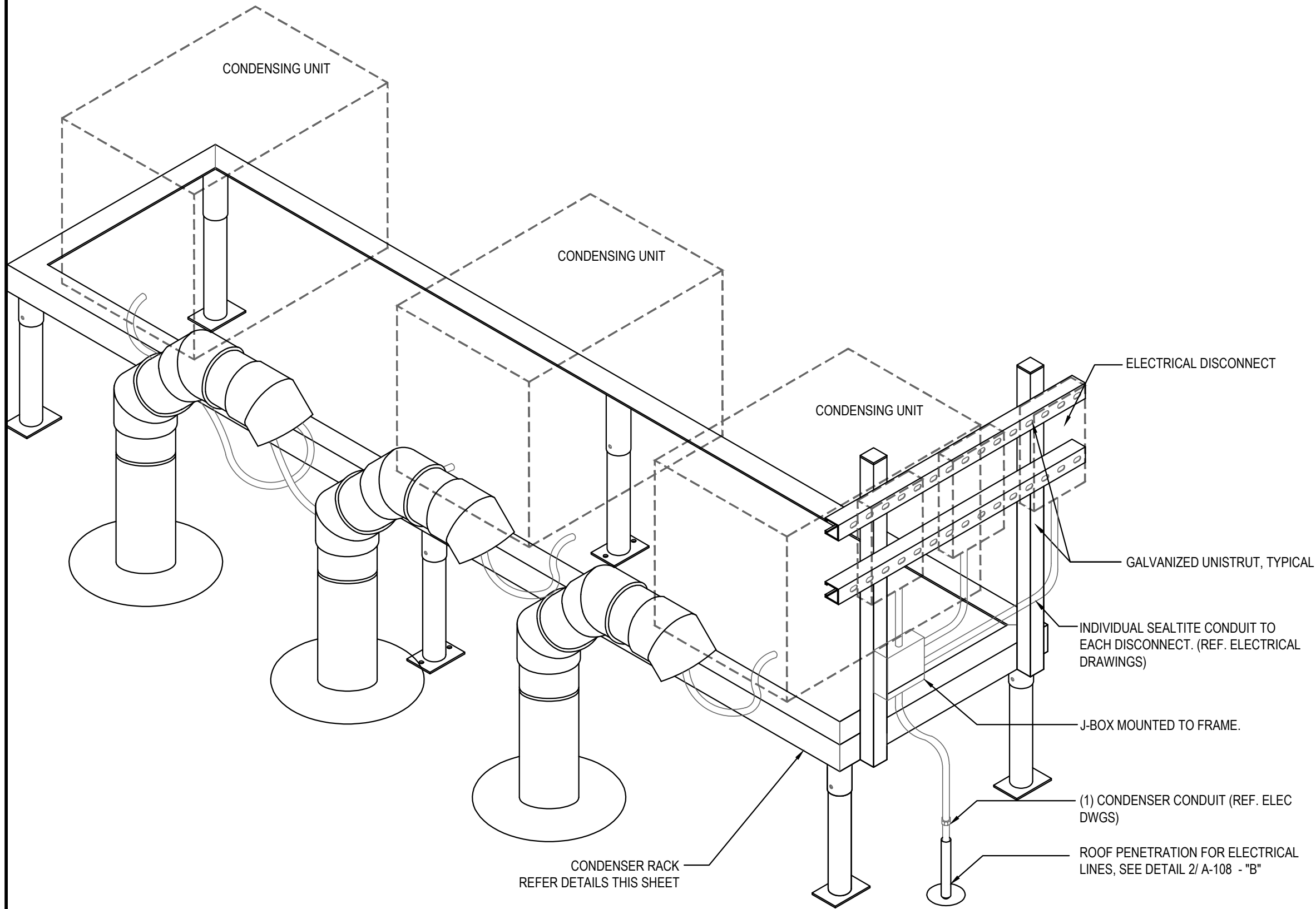


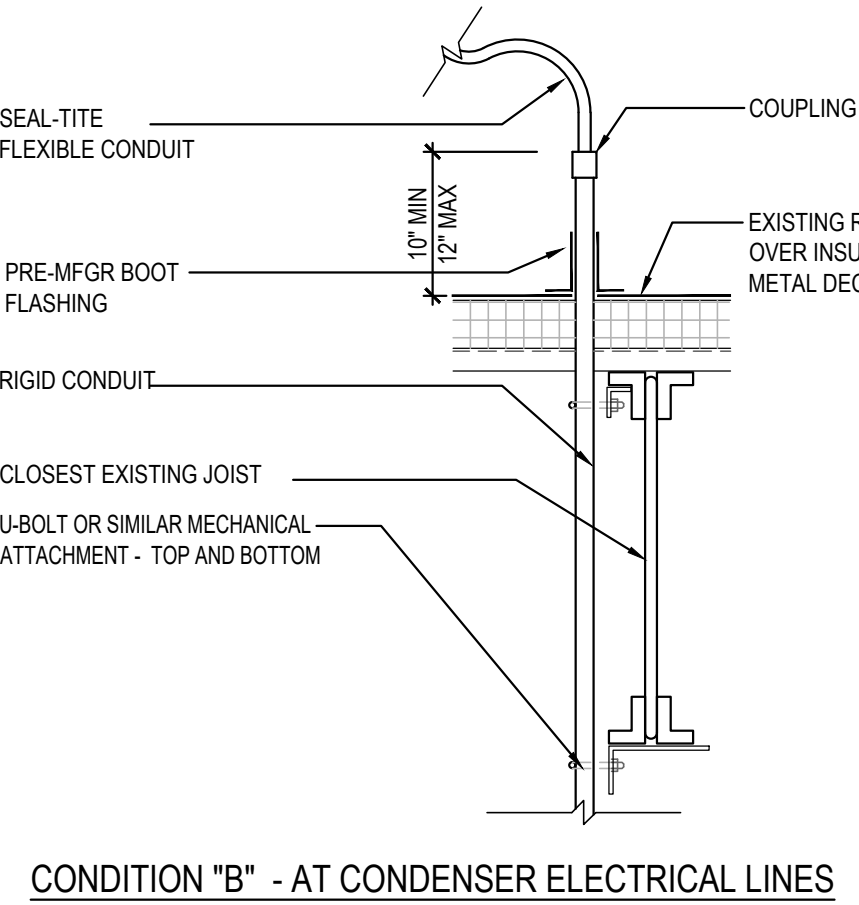
ALL MATERIALS USED MUST BE COMPATIBLE WITH EXISTING ROOF SYSTEM. ALL WORK TO BE COORDINATED THROUGH LANDLORD TO COMPLY WITH ROOF WARRANTY CONDITIONS.
CONTACT: GREG VAN DYNE, PROPERTY MANAGER, REGENCY CENTERS, 703-442-4363



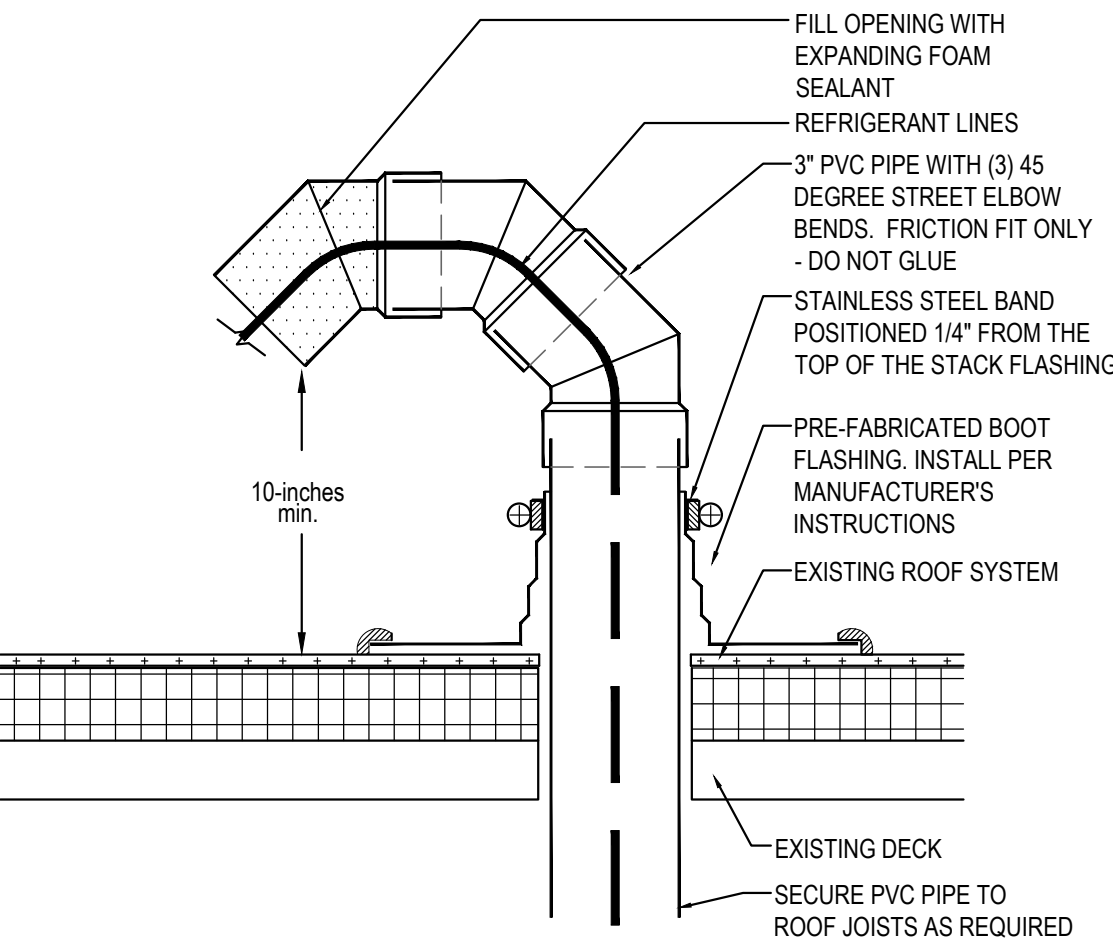
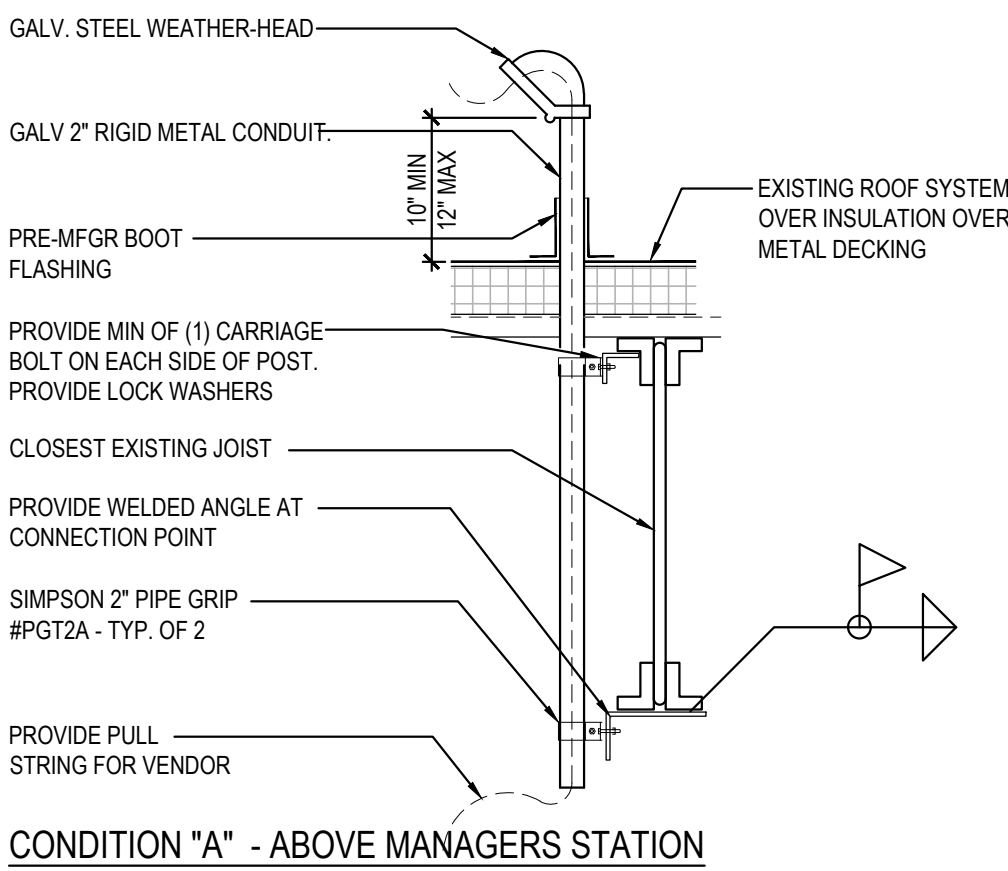
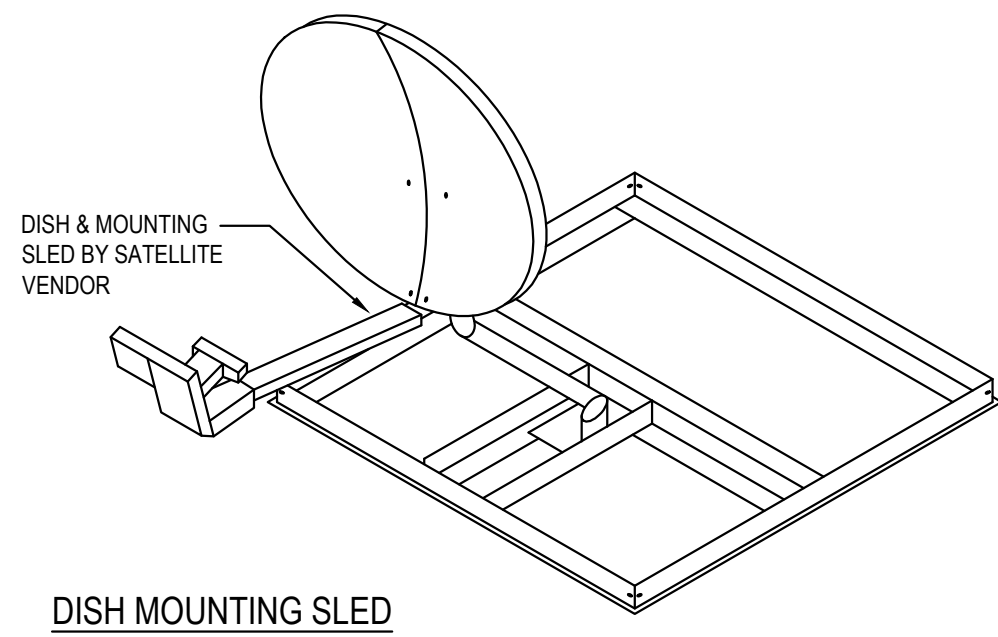
ROOF EXHAUST FAN 5
Scale= 1/4" = 1'-0" A-108



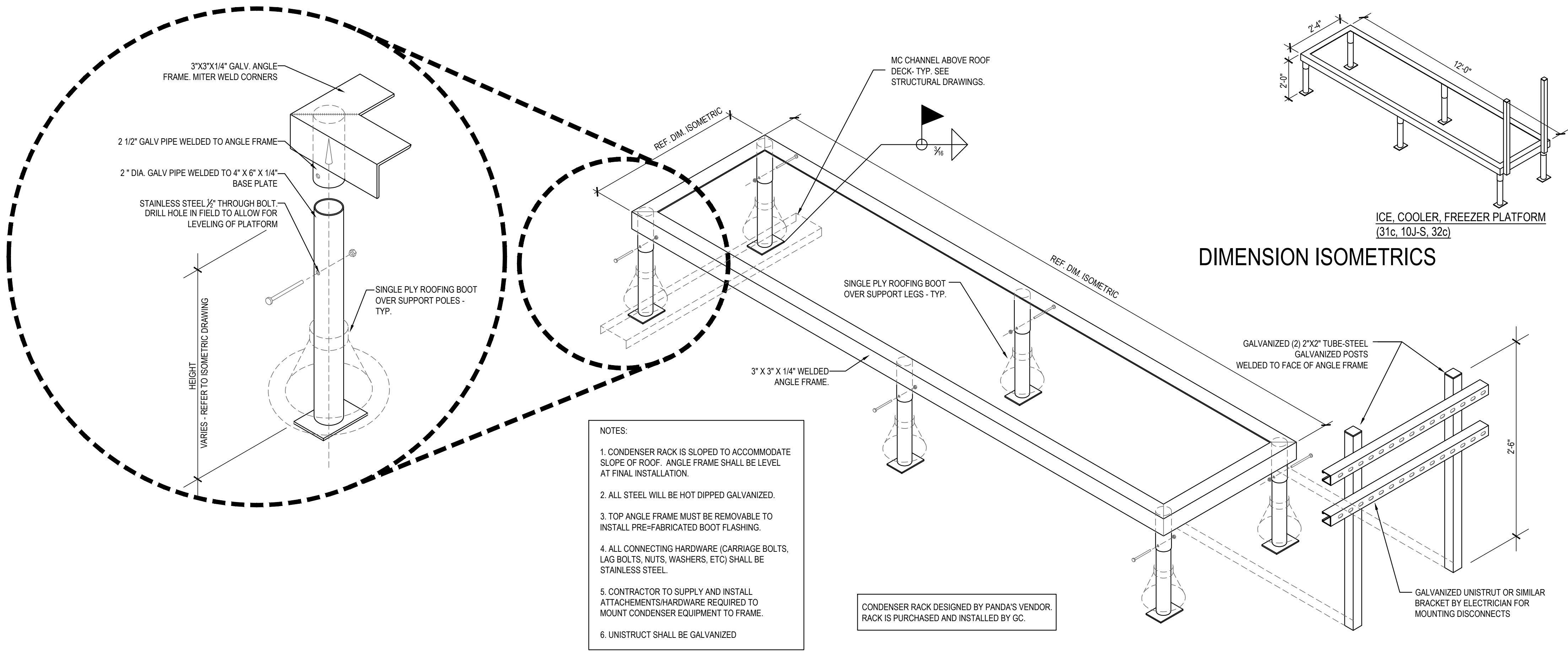
CONDENSER RACK ISOMETRIC 3
Scale= 3/4" = 1'-0" A-108



ROOF PENETRATION DETAIL AT REF. / ELEC. LINES AND SATELLITE DISH 2
Scale= 3/4" = 1'-0" A-108



PVC ROOF PENETRATION 4
Scale= 1/2" = 1'-0" A-108



- NOTES:
- CONDENSER RACK IS SLOPED TO ACCOMMODATE SLOPE OF ROOF. ANGLE FRAME SHALL BE LEVEL AT FINAL INSTALLATION.
 - ALL STEEL WILL BE HOT DIPPED GALVANIZED.
 - TOP ANGLE FRAME MUST BE REMOVABLE TO INSTALL PRE-FABRICATED BOOT FLASHING.
 - ALL CONNECTING HARDWARE (CARRIAGE BOLTS, LAG BOLTS, NUTS, WASHERS, ETC) SHALL BE STAINLESS STEEL.
 - CONTRACTOR TO SUPPLY AND INSTALL ATTACHEMENTS HARDWARE REQUIRED TO MOUNT CONDENSER EQUIPMENT TO FRAME.
 - UNISTRUT SHALL BE GALVANIZED

FREEZER / COOLER / ICE MAKER CONDENSER RACK DETAILS 1
Scale= 3/4" = 1'-0" A-108



PANDA EXPRESS, INC.
1683 Walnut Grove Ave.
Rosemead, California
91770
Telephone: 626.799.9898
Facsimile: 626.372.8288

All ideas, designs, arrangement and plans indicated or represented by this drawing are the property of Panda Express Inc. and were created for use on this specific project. None of these ideas, designs, arrangements or plans may be used by or disclosed to any person, firm, or corporation without the written permission of Panda Express Inc.

REVISIONS:		
ISSUE DATE:		
	PEER REVIEW	01-27-2020
	PR RESPONSE 1	02-21-2020
	BUILDING PERMIT	03-11-2020

DRAWN BY: CSW

PANDA PROJECT #: D7446

ARCH PROJECT #: JCDT19-0314

NORR
ARCHITECTS ENGINEERS PLANNERS

PANDA EXPRESS
GREENBRIAR TOWN CENTER,
13059 LEE JACKSON MEMORIAL HWY
FAIRFAX, VA 22033

A-108

CONDENSER RACK
DETAIL