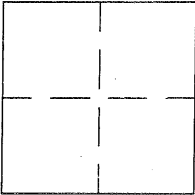


CORNER RECORD

BK 55 PG 67APN No. 099-1150-15 - (Optional)Document Number CR 3892

Unincorporated _____

County of ALAMEDA, CaliforniaBrief Legal Description BUENA VISTA AVENUE

CORNER TYPE

Government Corner ☐ Control ☐
Meander ☐ Property ☐
Rancho ☐ Other ☒
Date of Survey SEPT, 03, 2009

COORDINATES (Optional)

N. 429, 258
E. 1, 642, 808
Zone _____ NAD27 ☐ NAD83 ☐
NAD 83 Epoch _____
Elev. _____

Corner - Left as found ☐ Found and tagged ☐ Established ☐ Reestablished ☒ Rebuilt ☐

In compliance with Section 8771 of the Professional Land Surveyors' Act, this corner record is being filed to ESTABLISH _____ / REESTABLISH ☒ the position of an existing monument PRIOR _____ / SUBSEQUENT ☒ to street or highway reconstruction. (Use this portion only when applicable.)

Identification and type of corner found: Evidence used to identify or procedure used to establish or reestablish the corner:

CR 3689 WAS USED FOR RE-ESTABLISHING THE MONUMENT'S ORIGINAL LOCATION AS FOLLOWS: REF. PTS. 2, 3 & 4 WERE FOUND UNDISTURBED. PT. 1 WAS DISTURBED & NOT USED. THE DIAGONAL LINE OF PTS.

A description of the physical condition of the monument as found and as set or reset:

2 & 4 WAS HELD & INTERSECTED WITH THE RECORD ANGLE AT PT. 3, BACK SIGHTING PT. 4, TURNING TO PT. 1. SET COUNTY DISK RE 4781 AT THE INTERSECTION.

SURVEYOR'S STATEMENT

This Corner Record was prepared by me or under my direction in conformance with the Land Surveyors' Act on SEPT. 15, 20 09.

Signed Robert A. Machado (L.S.) or R.C.E. Number 7380



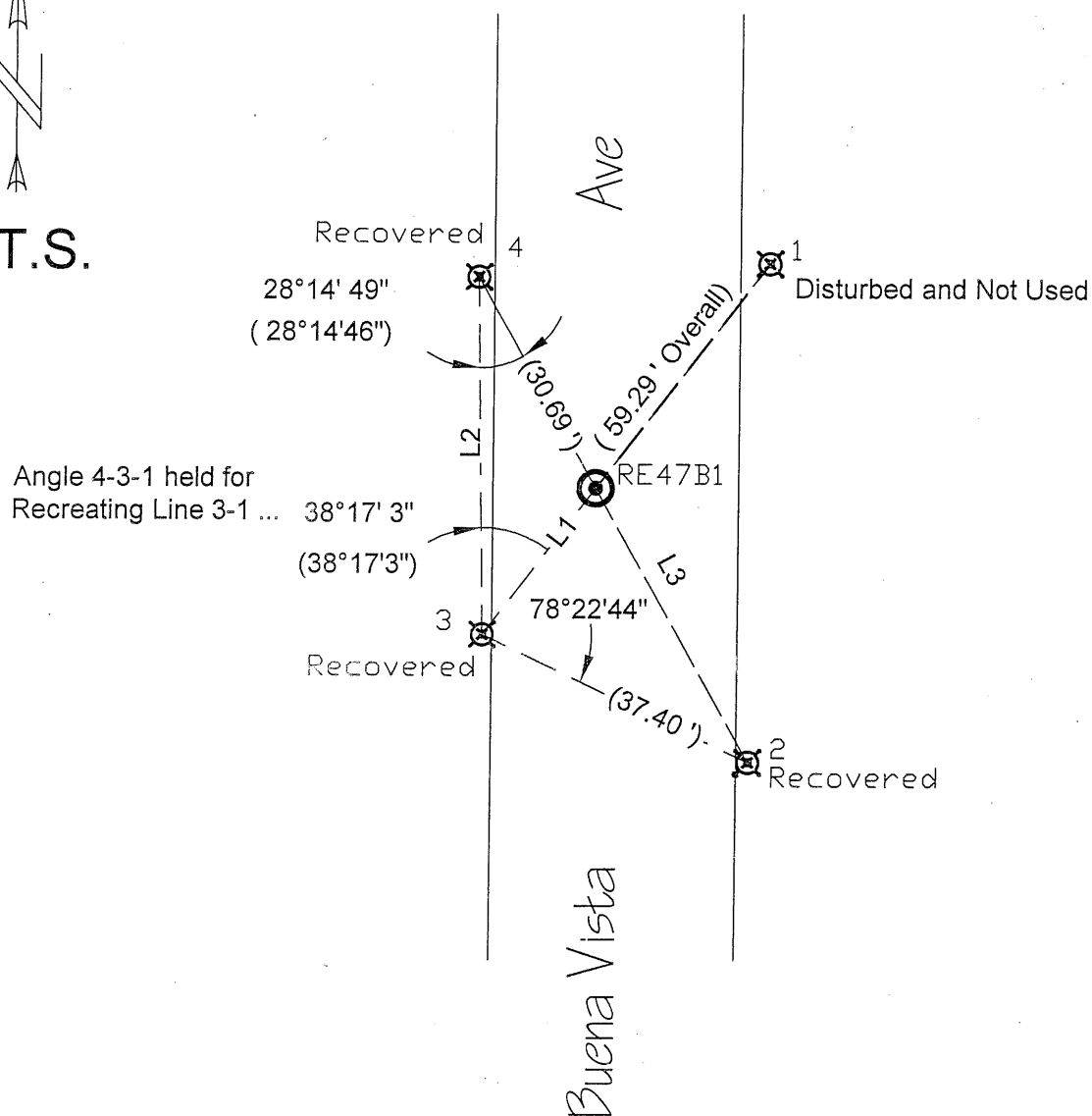
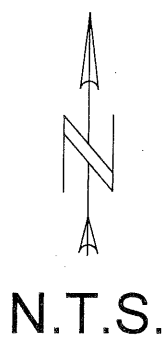
COUNTY SURVEYOR'S STATEMENT

This Corner Record was received SEPT. 16, 20 09 and examined and filed 11-14-20 13.

Signed [Signature] Title County Surveyor



County Surveyor's Comment _____



Legend

Found: $\frac{1}{2}$ " Rebar w/Plastic Cap

Set: Standard County Brass Disk

Measurements from CR 3689 Shown (###.##)



Line	CR 3689	CR 3892
L1	(23.44')	23.46'
L2	(45.43')	45.45'
L3	(70.62')	70.65'

Credits

Lead: Robert Machado

Assist.: Benjamin Arcibal

Computations: Joanne Fetzer

CAD: Al Jordan

File Name: CR3892 CR3689 20090730 withDXF Al.dwg

Job#: R23343

Reference(s)

CR 3689

RS 251, Bk 5 Pg 89

PM 3685, Bk 137 Pg 48

Alameda County Monument Id System (PTa...) RE47B1