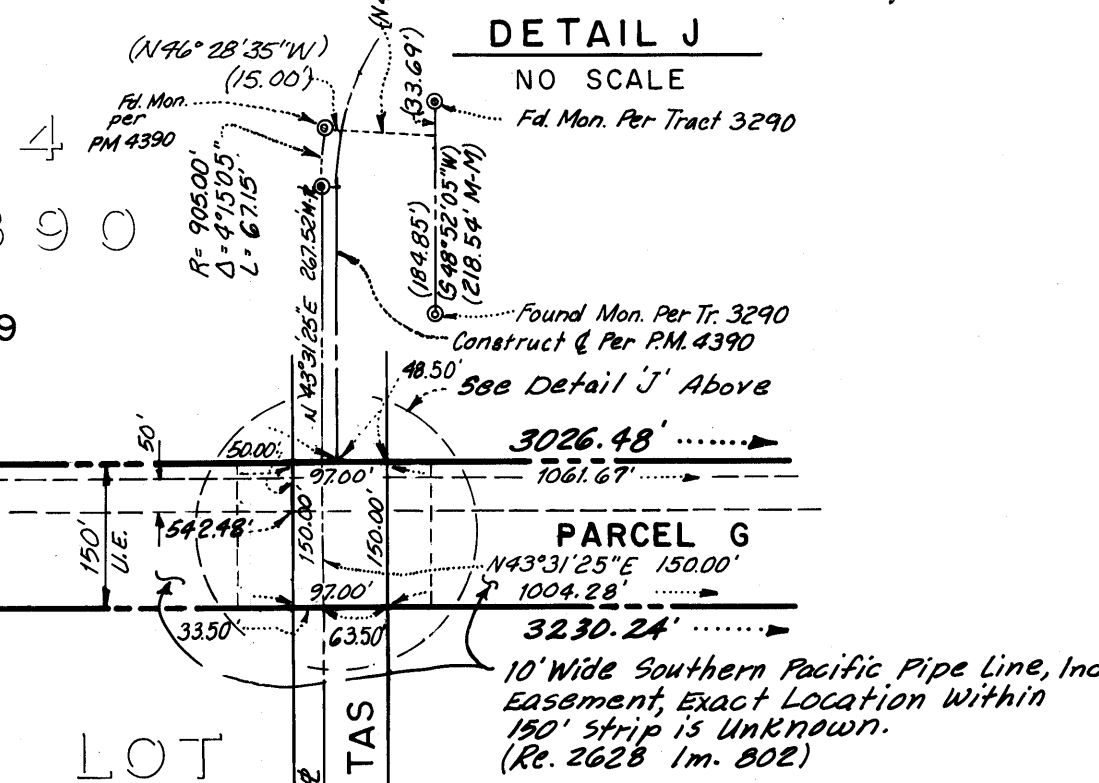
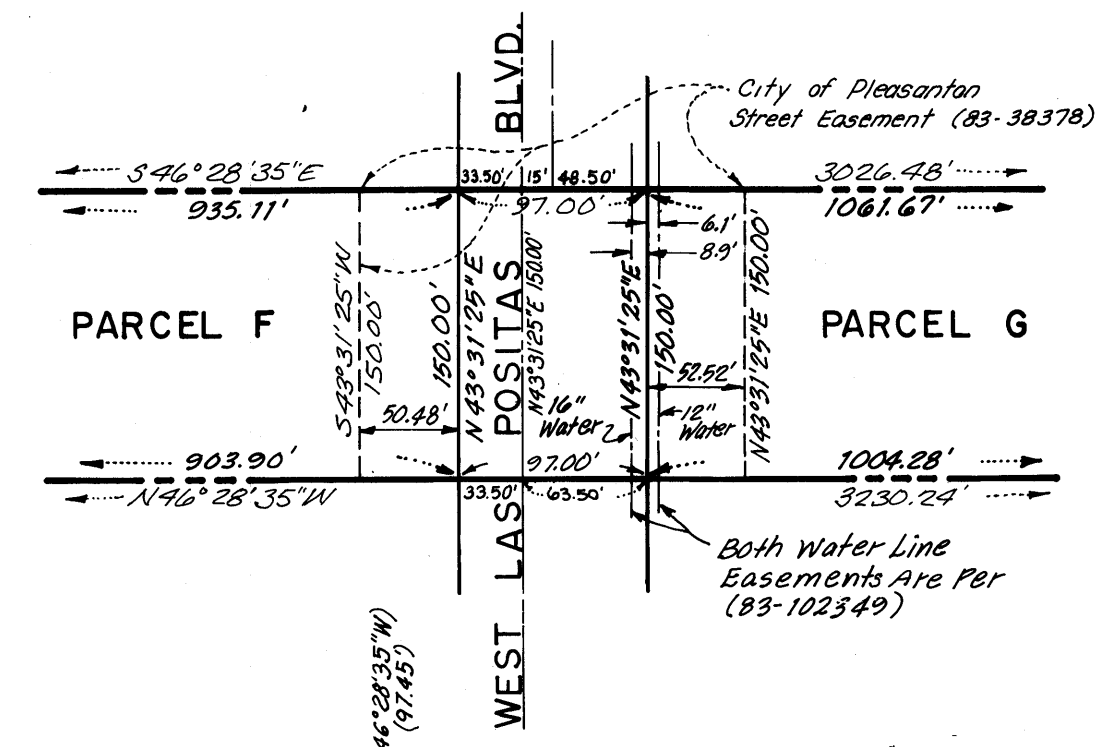
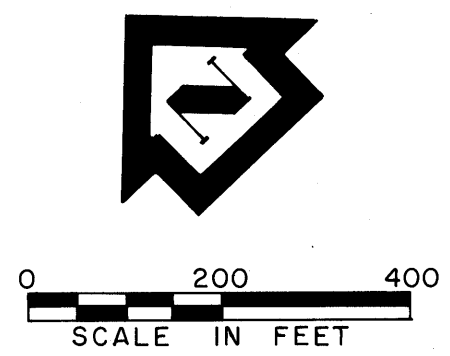


CURVE DATA			
NO.	RADIUS	DELTA	LENGTH
①	1050.00'	12° 40' 49"	232.38'
②	1000.00'	12° 40' 49"	221.31'



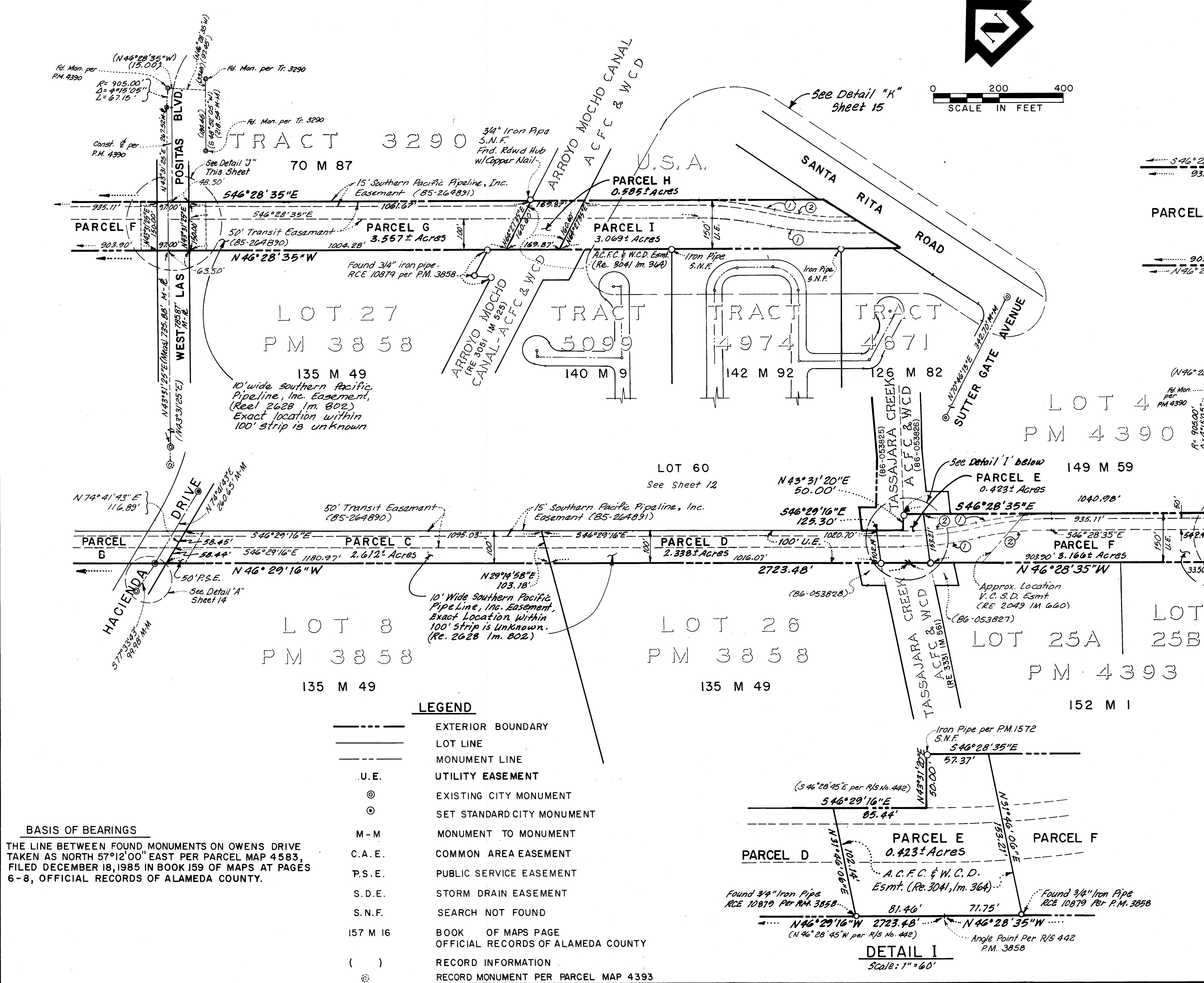
**★ USE WITH CAUTION ★**  
 THIS IS A PUBLIC WORKS DEPARTMENT  
 WORKING COPY OF AN OFFICIAL MAP  
 ON FILE IN THE OFFICE OF THE COUNTY  
 RECORDER, COUNTY OF ALAMEDA. OF-  
 FICE INFORMATION OR CALCULATIONS  
 MAY HAVE BEEN ADDED HEREON.

**PARCEL MAP 3863**  
 CITY OF PLEASANTON  
 ALAMEDA COUNTY, CALIFORNIA

BISSELL & KARN, INC.  
 PLEASANTON, CALIFORNIA

FEBRUARY 1986 SCALE: 1" = 200'

SHEET 13 OF 16 SHEETS (MS 86-4) JOB NO. 866801



**LEGEND**

- EXTERIOR BOUNDARY
- LOT LINE
- MONUMENT LINE
- U.E. UTILITY EASEMENT
- ⊙ EXISTING CITY MONUMENT
- ⊙ SET STANDARD CITY MONUMENT
- M-M MONUMENT TO MONUMENT
- C.A.E. COMMON AREA EASEMENT
- P.S.E. PUBLIC SERVICE EASEMENT
- S.D.E. STORM DRAIN EASEMENT
- S.N.F. SEARCH NOT FOUND
- 157 M 16 BOOK OF MAPS PAGE OFFICIAL RECORDS OF ALAMEDA COUNTY
- ( ) RECORD INFORMATION
- ⊙ RECORD MONUMENT PER PARCEL MAP 4393

**BASIS OF BEARINGS**  
 THE LINE BETWEEN FOUND MONUMENTS ON OWENS DRIVE  
 TAKEN AS NORTH 57°12'00" EAST PER PARCEL MAP 4583,  
 FILED DECEMBER 18, 1985 IN BOOK 159 OF MAPS AT PAGES  
 6-8, OFFICIAL RECORDS OF ALAMEDA COUNTY.

*filed 5-22-86*

*161/27*

PM 3863 161/27 map bk 161  
 Pg 27