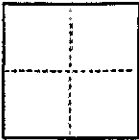


(For County Use Only)

CORNER RECORD

C.R. 103

COUNTY OF Alameda T. 1 S R. 3 W MT. DIABLO MERIDIAN CALIFORNIA
 CORNER TYPE: GOV'T. CORNER ☐ MEANDER ☐ RANCHO ☐ CONTROL ☐ OTHER ☒
 CORNER IDENTIFICATION — DATE OF VISIT December 31, 1991



CORNER — LEFT AS FOUND ☐ FOUND AND TAGGED ☐ REESTABLISHED OBLITERATED CORNER ☐ REBUILT ☒

PHYSICAL DESCRIPTION OF CORNER FOUND; EVIDENCE AND METHOD USED TO IDENTIFY OR REESTABLISH

Found monuments in Norfolk Road as shown on the map of Gwin Unit of the Highlands of Oakland; filed November 10, 1925, Map Book 5, Page 39, Alameda County Records.

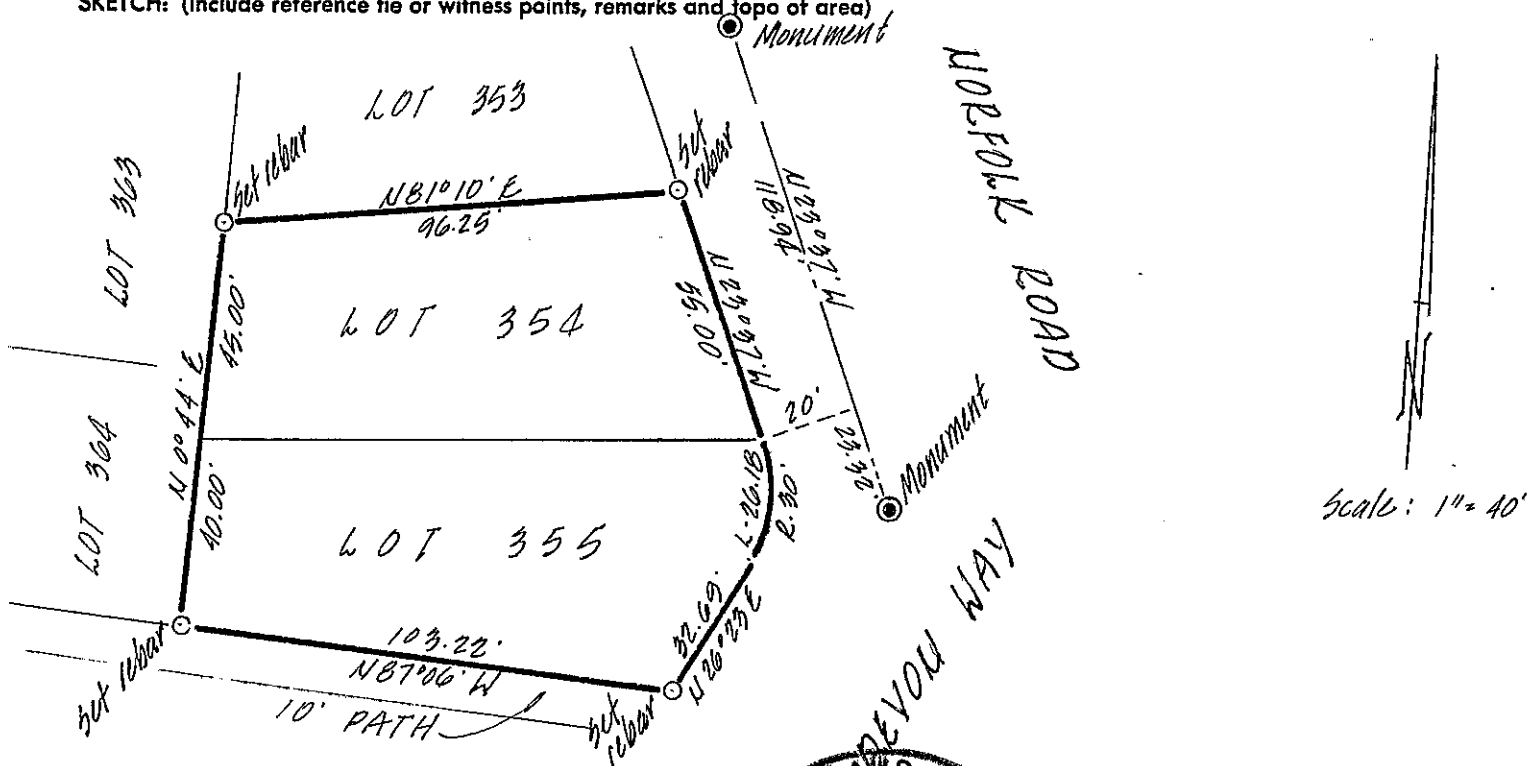
PHYSICAL DESCRIPTION OF MONUMENTS REBUILT OR PERPETUATED

Set 3/8" rebar with cap LS 3833 at the corners of lots 354 and 355 as shown on the sketch.

CALIFORNIA COORDINATE SYSTEM ORDER: FIRST ☐ SECOND ☐ THIRD ☐
 STATIONS USED: NGS (USC & GS) ☐ STATE ☐ COUNTY ☐ OTHER ☐ STATION _____ STATION _____
 ZONE _____ ELEVATION _____ NORTHINGS (Y) _____ EASTINGS (X) _____

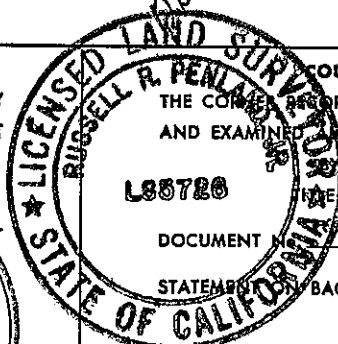
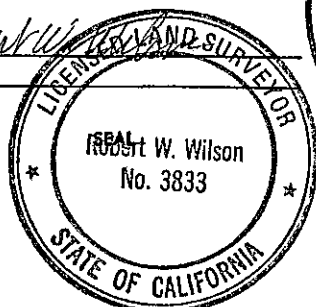
(Fold)

SKETCH: (Include reference tie or witness points, remarks and topo of area)



SURVEYOR'S CERTIFICATE

THIS CORNER RECORD WAS PREPARED BY ME OR UNDER MY DIRECTION IN CONFORMANCE WITH THE LAND SURVEYORS ACT ON January 15, 1992

SIGNED: Robert W. WilsonL.S. or R.X.E. No.: 3833

COUNTY SURVEYOR'S CERTIFICATE

THE CORNER RECORD WAS RECEIVED July 2, 1992 AND EXAMINED AND FILED July 13, 1992

L38720

DOCUMENT

STATEMENT ON BACK OF SHEET

YES ☐NO ☒

Book 2 C.R. Page 24