

# TRACT N° 36-44 CHATEAU SANS NOM

MONO COUNTY, CALIFORNIA

AUGUST, 1972  
30 LOTS & LOT A

GERALD F. OLDENBURG, L.S. 3246  
3.385 ACRES

WILLIAMSON & SCHMID, CIVIL ENGINEERS

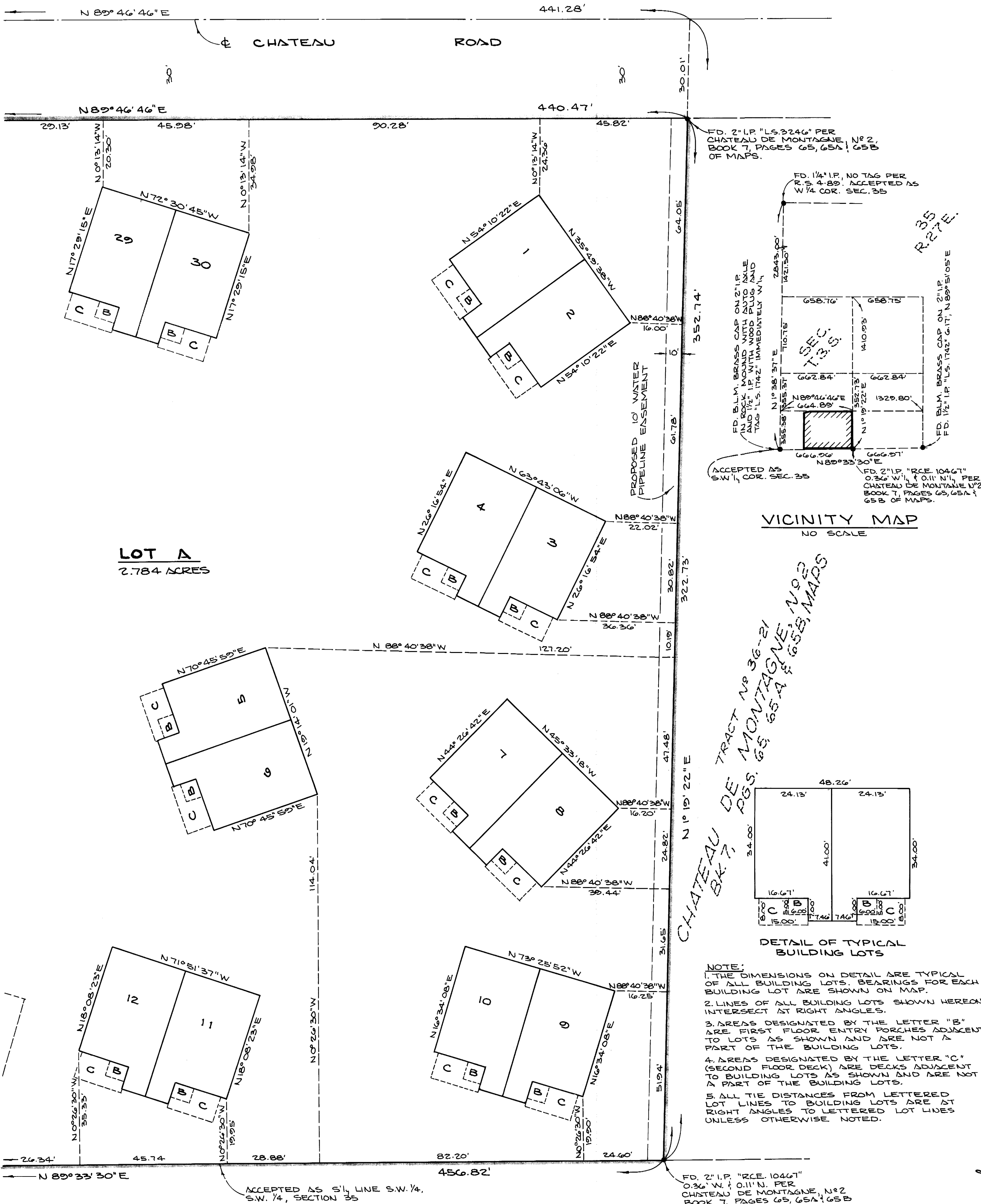
## BASIS OF BEARINGS:

BEARINGS HEREON ARE BASED ON THE WESTERLY  
LINE OF CHATEAU DE MONTAGNE N° 2, BEING  
N 1° 19' 22" E. PER BOOK 7, PAGES 65, 65A & 65B  
OF MAPS, RECORDS OF MONO COUNTY, CALIFORNIA.

## MONUMENT NOTES:

0 INDICATES SET 2" I.P. TAGGED L.S. 3246 UNLESS  
OTHERWISE NOTED.

● INDICATES FOUND MONUMENTS AS NOTED.



SEE SHEET N° 3

LOT A  
2.784 ACRES

VICINITY MAP  
NO SCALE

DETAIL OF TYPICAL  
BUILDING LOTS

NOTE:  
1. THE DIMENSIONS ON DETAIL ARE TYPICAL  
OF ALL BUILDING LOTS. BEARINGS FOR EACH  
BUILDING LOT ARE SHOWN ON MAP.  
2. LINES OF ALL BUILDING LOTS SHOWN HEREON  
INTERSECT AT RIGHT ANGLES.  
3. AREAS DESIGNATED BY THE LETTER "B"  
ARE FIRST FLOOR ENTRY PORCHES ADJACENT  
TO LOTS AS SHOWN AND ARE NOT A  
PART OF THE BUILDING LOTS.  
4. AREAS DESIGNATED BY THE LETTER "C"  
(SECOND FLOOR DECK) ARE DECKS ADJACENT  
TO BUILDING LOTS AS SHOWN AND ARE NOT  
A PART OF THE BUILDING LOTS.  
5. ALL TIE DISTANCES FROM LETTERED  
LOT LINES TO BUILDING LOTS ARE AT  
RIGHT ANGLES TO LETTERED LOT LINES  
UNLESS OTHERWISE NOTED.

FD. 2" I.P. "RCE. 10467"  
0.36" W. & 0.11" N. PER  
CHATEAU DE MONTAGNE, N° 2  
BOOK 7, PAGES 65, 65A & 65B  
OF MAPS.

Vol. 8, Pg. 16-A