

CURVE DATA			
Curve	Delta	Radius	Arc Length
C1	30°54'09"	565.00'	304.71'
C2	6°05'04"	565.00'	60.00'
C3	29°55'51"	100.00'	52.23'
C4	119°55'51"	50.00'	104.66'
C5	119°55'51"	50.00'	104.66'
C6	29°55'51"	100.00'	52.23'
C7	73°32'55"	50.00'	64.18'

## LEGEND

- = FOUND 1" REBAR TAGGED L.S. 1880 PER MC2, D17, P19, MCR
- △ = 1 SET PK NAIL
- ▲ = 1 SET RAILROAD SPIKE
- = 1 SET 1/2" DIA. REBAR W/ PLASTIC CAP STAMPED RCE 18341
- = DIMENSION POINT ONLY, NO POINT SET OR FOUND
- ⊙ = FOUND 3/4" REBAR TAGGED L.S. 3184 PER MC2, D41, P68, MCR
- TS = THIS SURVEY
- (<sup>1</sup>) = RECORD DATA PER MC2, DR.41, P68, MCR (MS 35 - 83)
- (<sup>2</sup>) = RECORD DATA PER MC2, DR.56, P30, MCR (MS 17 - 91)
- (<sup>3</sup>) = RECORD DATA PER DR.66, P96, MCR (MS 47 - 88)
- (<sup>4</sup>) = RECORD DATA PER MC2, DR.17, P19, MCR
- (<sup>5</sup>) = RECORD DATA PER 184 O.R. 32, MCR
- (<sup>6</sup>) = RECORD DATA PER 952 O.R. 637, MCR
- (<sup>7</sup>) = RECORD DATA PER I.N. 1998 23624, MCR
- (<sup>8</sup>) = RECORD DATA PER 1308 O.R. 356, MCR
- (<sup>9</sup>) = RECORD DATA PER 1477 O.R. 346, MCR
- (<sup>10</sup>) = RECORD DATA PER I.N. 2005 13278, MCR

MEASUREMENTS OF THIS SURVEY CONFORM TO BEARINGS AND DISTANCES OF MC2, D41, P68 UNLESS NOTED OTHERWISE

NOTE 1: FUTURE DEVELOPMENT OF BUILDING SITE(S), ACCESS ROADS OR DRIVEWAYS MAY BE SUBJECT TO THE GRADING REQUIREMENTS AND DRAINAGE CONTROL MEASURES IDENTIFIED IN STANDARD CONDITION NO. 1 OF THE CONDITIONS OF APPROVAL FOR THIS DIVISION.

NOTE 2: DEVELOPMENT INCLUDING ROADS, WELLS, STRUCTURES AND SEPTIC SYSTEMS WILL BE CONFINED TO THE BUILDING ENVELOPES AS DESCRIBED ON THE EXHIBIT MAP ON FILE IN THE DEPARTMENT OF PLANNING AND BUILDING SERVICES.

NOTE 3: 3/4" REBAR TAGGED L.S. 3184 PER MC2, D41, P68, MCR, WAS FOUND IN FIRST SURVEY. AFTER CONSTRUCTION IT WAS MISSING. IT REPLACED IT IN ITS PROPER POSITION WITH 1/2" REBAR W/ PLASTIC CAP STAMPED RCE 18341.

NOTE 4: THE ENVIRONMENTAL HEALTH DIVISION HAS DETERMINED THAT EXCESSIVE LEVELS OF IRON, MANGANESE, AND CORROSIVITY (PH) MAY EXIST IN THE WATER SUPPLY FOR THE PROPOSED PROPERTY AND MAY REQUIRE TREATMENT FOR DOMESTIC USE.

SHEET 2 OF 3

PARCEL MAP MINOR SUBDIVISION MS 15-2005 OF A PORTION OF PARCEL 4, MS 35 - 83, MCR FOR: ROBERT AFFINITO IN SECTION 17, T18N, R17W, MDR&M MENDOCINO COUNTY, CALIFORNIA	
SCALE: 1" = 100'	OCTOBER 2008
MAPS DRAWER <b>78</b>	
PAULI Engineering & Surveying 535 Chestnut St. Fort Bragg, CA 95437 (707) 964-5225	
JOB: 0455 PAGE <b>73</b>	

REDWOODS

COMMUNITY

COLLEGE

DISTRICT

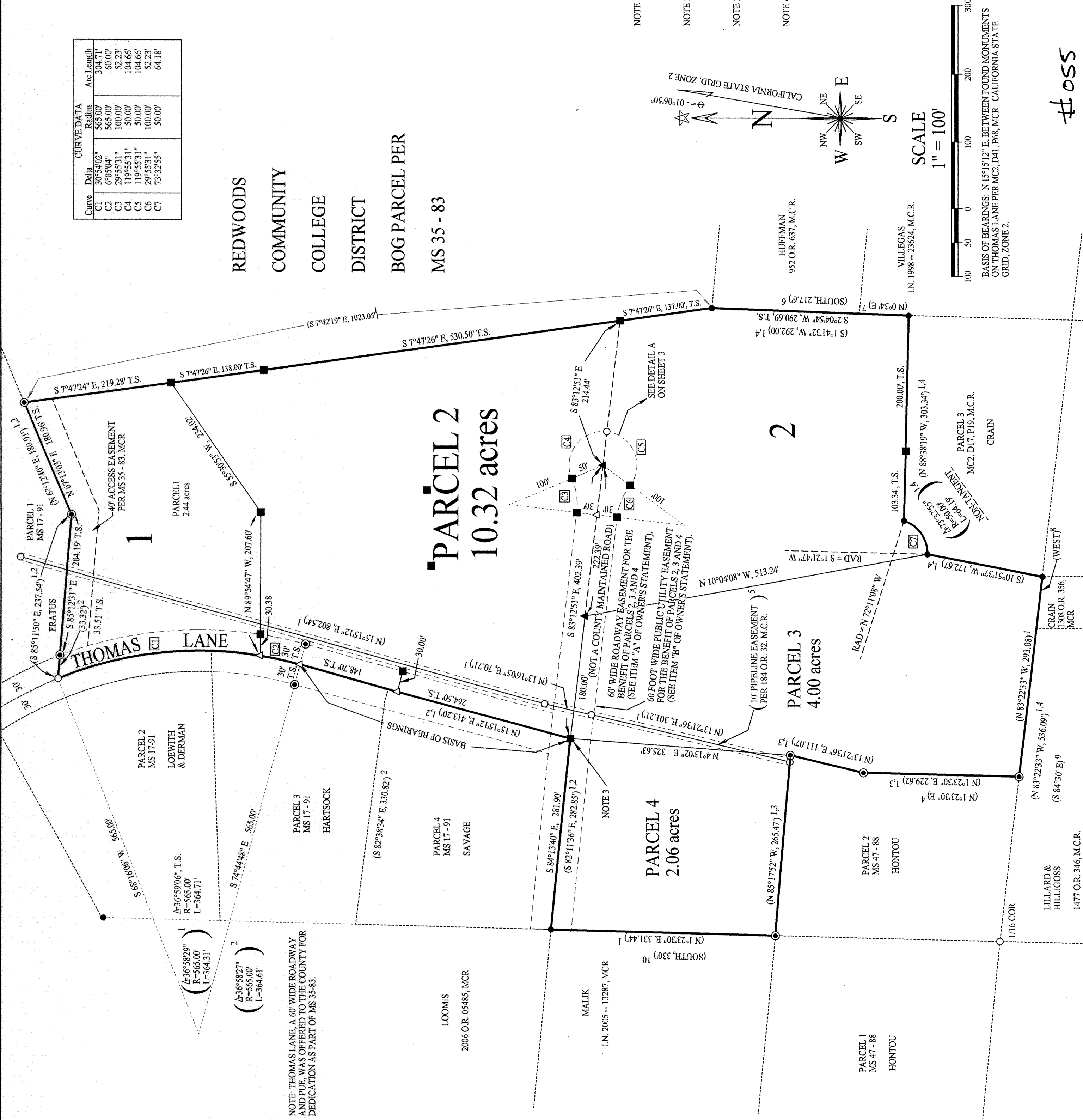
BOG PARCEL PER

MS 35 - 83

PARCEL 2  
10.32 acres

PARCEL 4  
2.06 acres

PARCEL 3  
4.00 acres



#055