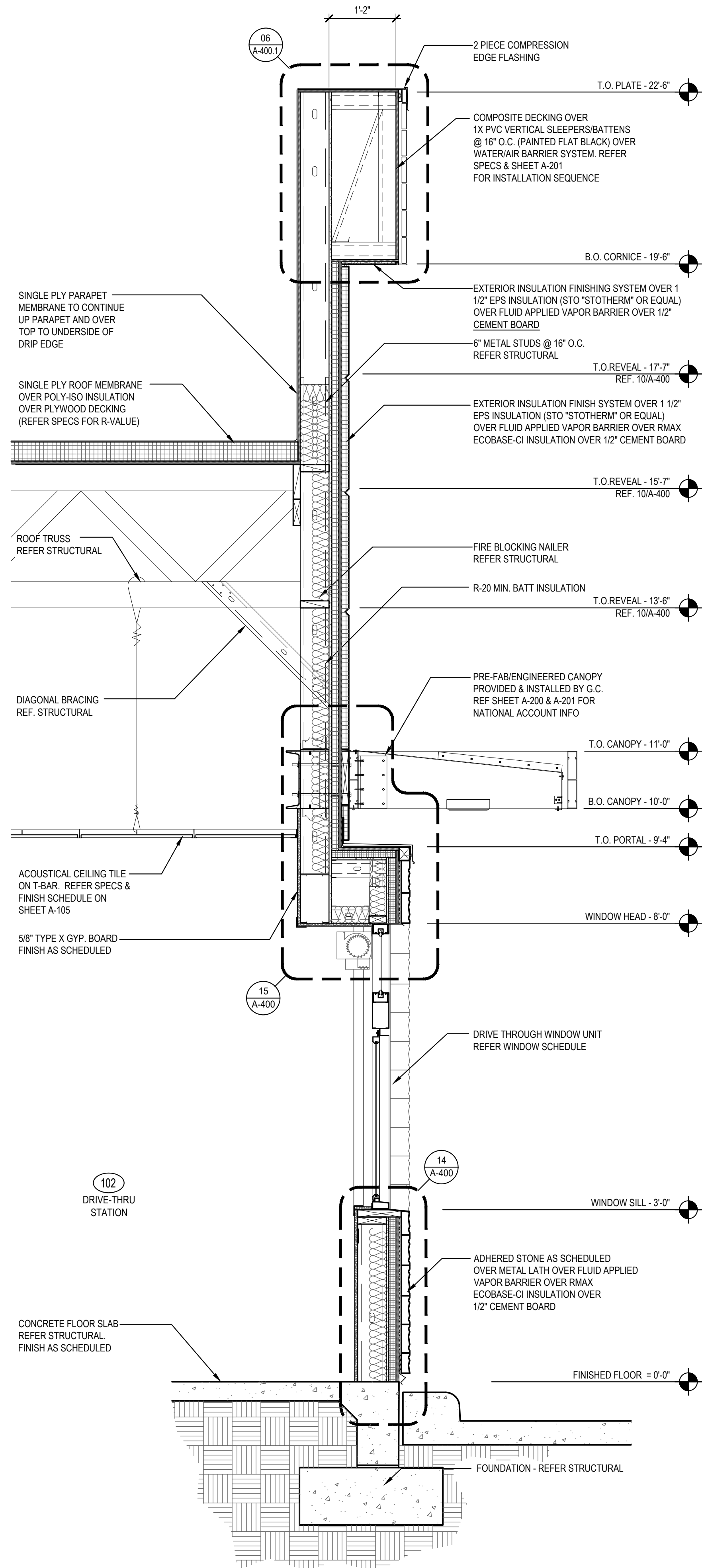
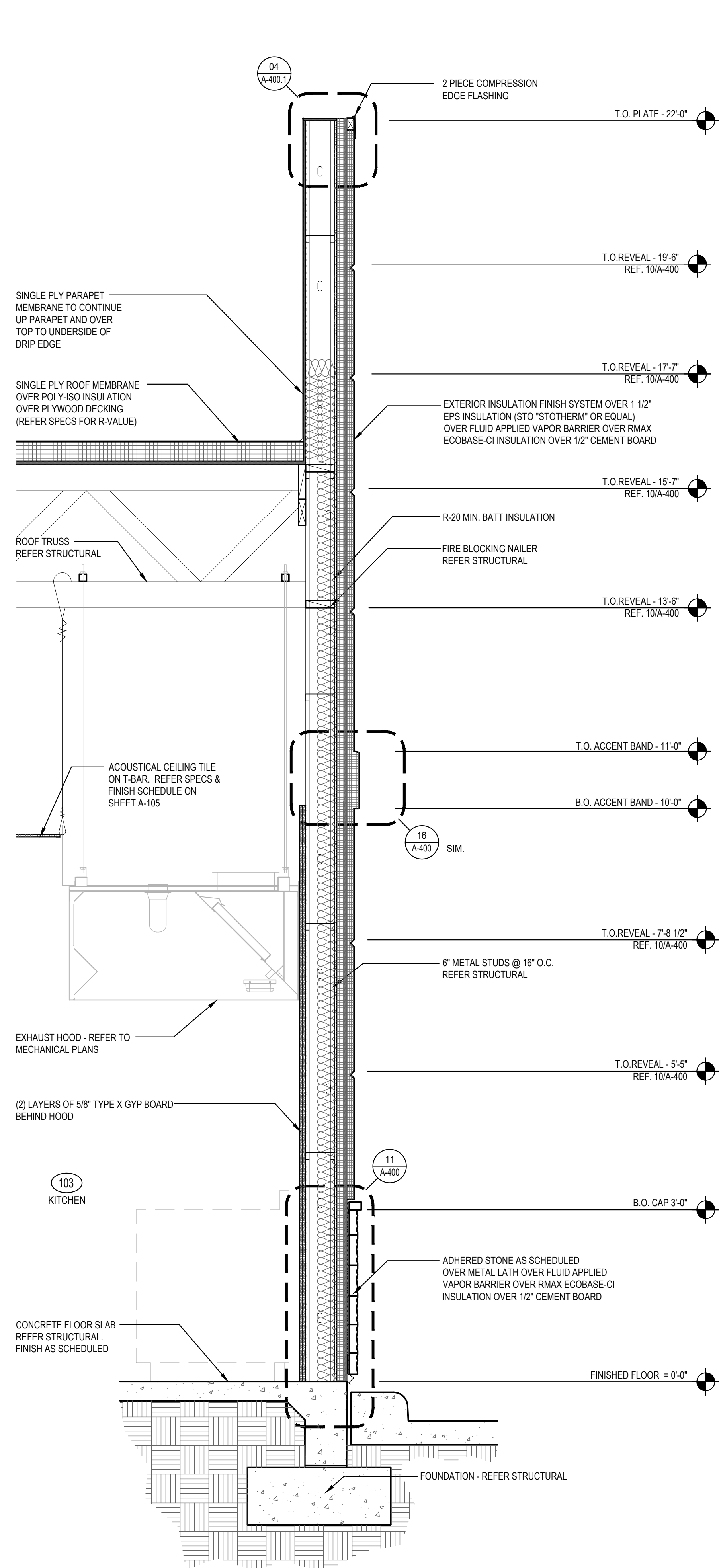


SECTION 1  
Scale= 3/4" = 1'-0" A-304



SECTION 2  
Scale= 3/4" = 1'-0" A-304



SECTION 3  
Scale= 3/4" = 1'-0" A-304



PANDA EXPRESS, INC.  
1683 Walnut Grove Ave.  
Rosemead, California  
91770  
Telephone: 626.799.9898  
Facsimile: 626.372.8288

All ideas, designs, arrangement and plans indicated or represented by this drawing are the property of Panda Express Inc. and were created for use on this specific project. None of these ideas, designs, arrangements or plans may be used by or disclosed to any person, firm, or corporation without the written permission of Panda Express Inc.

REVISIONS:


ISSUE DATE:

1	CHECK SET	12-15-20
2	PERMIT SET	12-18-20
3	BID SET	02-01-21
4	CONSTRUCTION SET	07-08-21

DRAWN BY: JO

PANDA PROJECT #: S8-21-D8043  
ARCH PROJECT #: P7356.2

**cph**  
www.cphcorp.com  
**A Full Service  
A & E Firm**

Plans Prepared By  
**CPI, Inc.**  
500 West Fulton St.  
Sanford, FL 32771  
Ph: 407.322.6841  
Licenses:  
Eng. C.O.A. No. 3215  
Survey L.B. No. 7143  
Arch. Lic. No. AA2600926  
Landscape Lic. No. LC0000298

PANDA EXPRESS  
TRUE WARM & WELCOME 2300  
2599 S WOODLAND BLVD  
DELAND, FL 32720

A-304

WALL SECTIONS

TRUE WARM & WELCOME 2300 R1