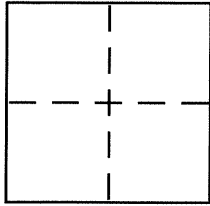


CORNER RECORDDocument Number CR 7857City of BERKELEYCounty of ALAMEDA, CaliforniaBrief Legal Description CITY OF BERKELEY MONUMENT B0384**CORNER TYPE**

Government Corner ☐ Control ☒
 Meander ☐ Property ☐
 Rancho ☐ Other ☐
 Date of Survey 11-19-2015

COORDINATES (Optional)

N. _____
 E. _____
 Zone _____ NAD27 ☐ NAD83 ☐
 NAD83 Epoch _____
 Elev. _____
 Vert. Datum: NGVD29 ☐ NAVD88 ☐
 Meas. Units: Metric ☐ Imperial ☐

Corner – Left as found ☐ Found and tagged ☐ Established ☐ Reestablished ☒ Rebuilt ☐

Identification and type of corner found: Evidence used to identify or procedure used to establish or reestablish the corner:
**IN COMPLIANCE WITH SECTION 8771 OF THE PROFESSIONAL LAND SURVEYORS' ACT, THIS CORNER
 RECORD IS BEING FILED TO RE-ESTABLISH THE POSITION OF AN EXISTING MONUMENT AFTER
 STREET RESURFACING.**

A description of the physical condition of the monument as found and as set or reset: _____

SEE PAGE 2

SURVEYOR'S STATEMENT

This Corner Record was prepared by me or under my direction in conformance with
 the Land Surveyor's Act on NOVEMBER 24, 2015

Signed [Signature] P.L.S. or R.C.E. No. 5003

COUNTY SURVEYOR'S STATEMENT

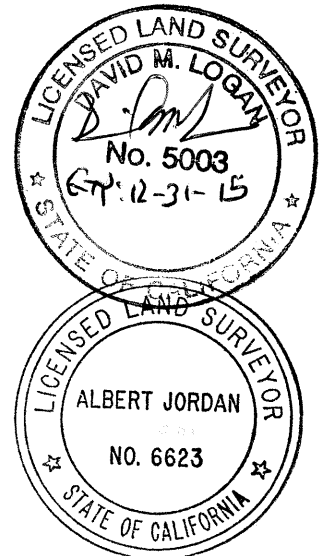
This Corner Record was received 12-09-2015

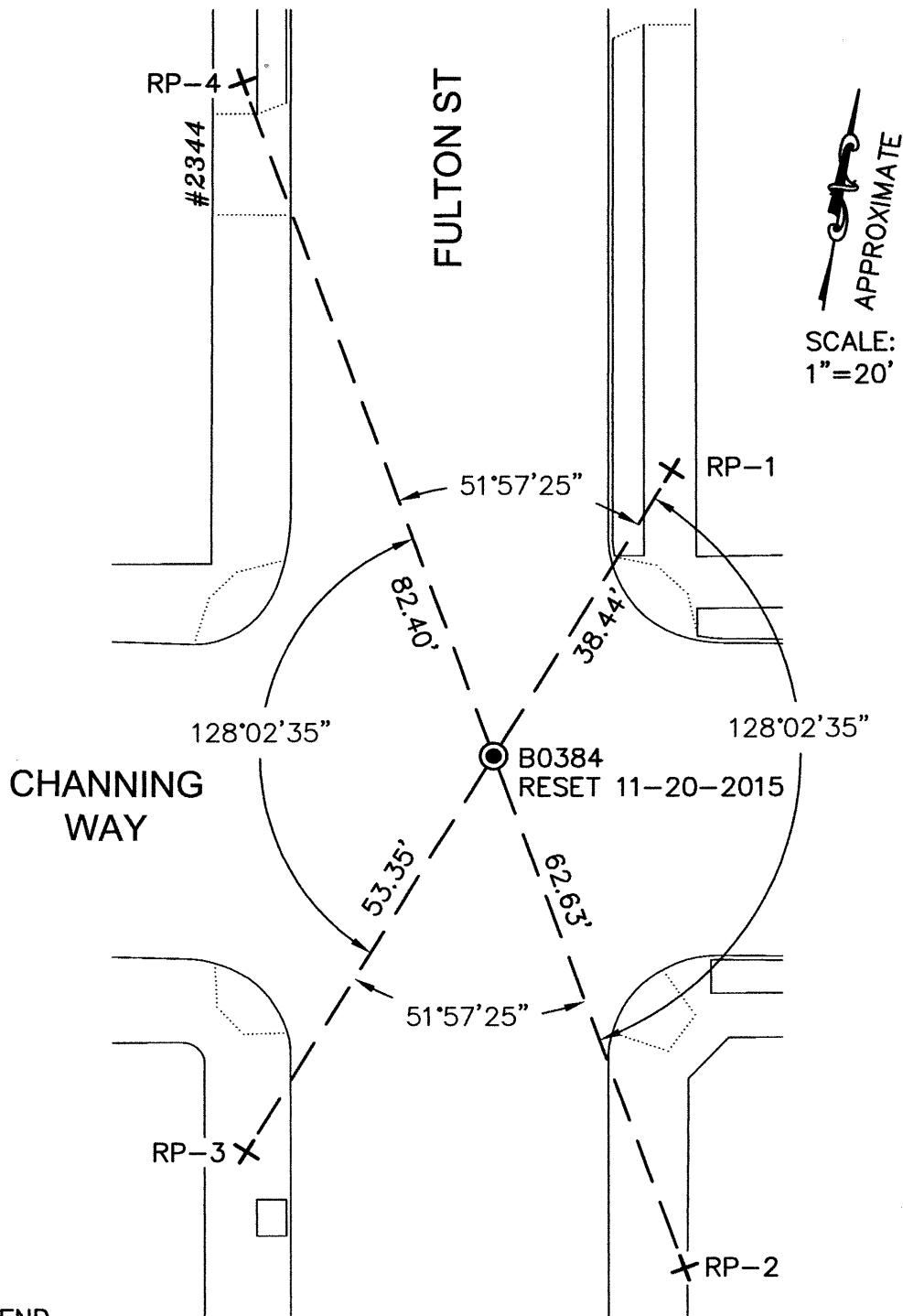
and examined and filed 12-23-2015

Signed Albert Jordan P.L.S. or R.C.E. No. 6623

Title Deputy County Surveyor

County Surveyor's Comment _____

**QH66J1**



LEGEND

- ⊙ 2" BRASS DISC CITY MONUMENT WITH A PUNCH MARK
IN A STANDARD MONUMENT WELL
- + SET REFERENCE CROSS

NOTE:

THE EXISTING MONUMENT AS SHOWN IS
REFERENCED BY STRAIGHT LINES BETWEEN
RP-1 TO RP-3 AND RP-2 TO RP-4.