

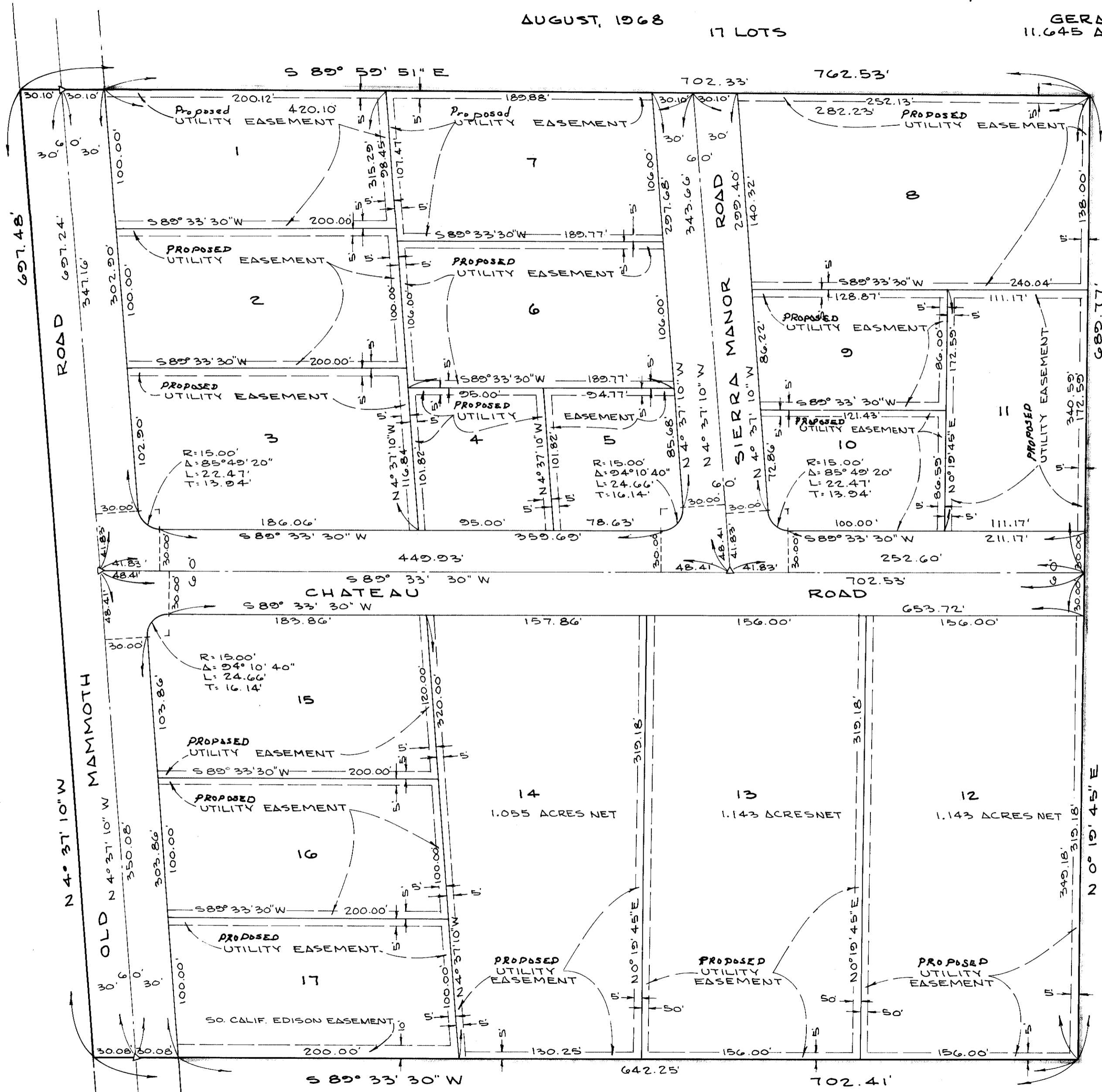
SHERWIN MEADOWS PARK SUBDIVISION

BEING A SUBDIVISION OF A PORTION OF THE S 1/2 OF THE SE 1/4 OF THE SW 1/4 OF SECTION 35, TOWNSHIP 3 SOUTH, RANGE 27 EAST OF THE MOUNT DIABLO MERIDIAN, COUNTY OF MONO, CALIFORNIA

AUGUST, 1968

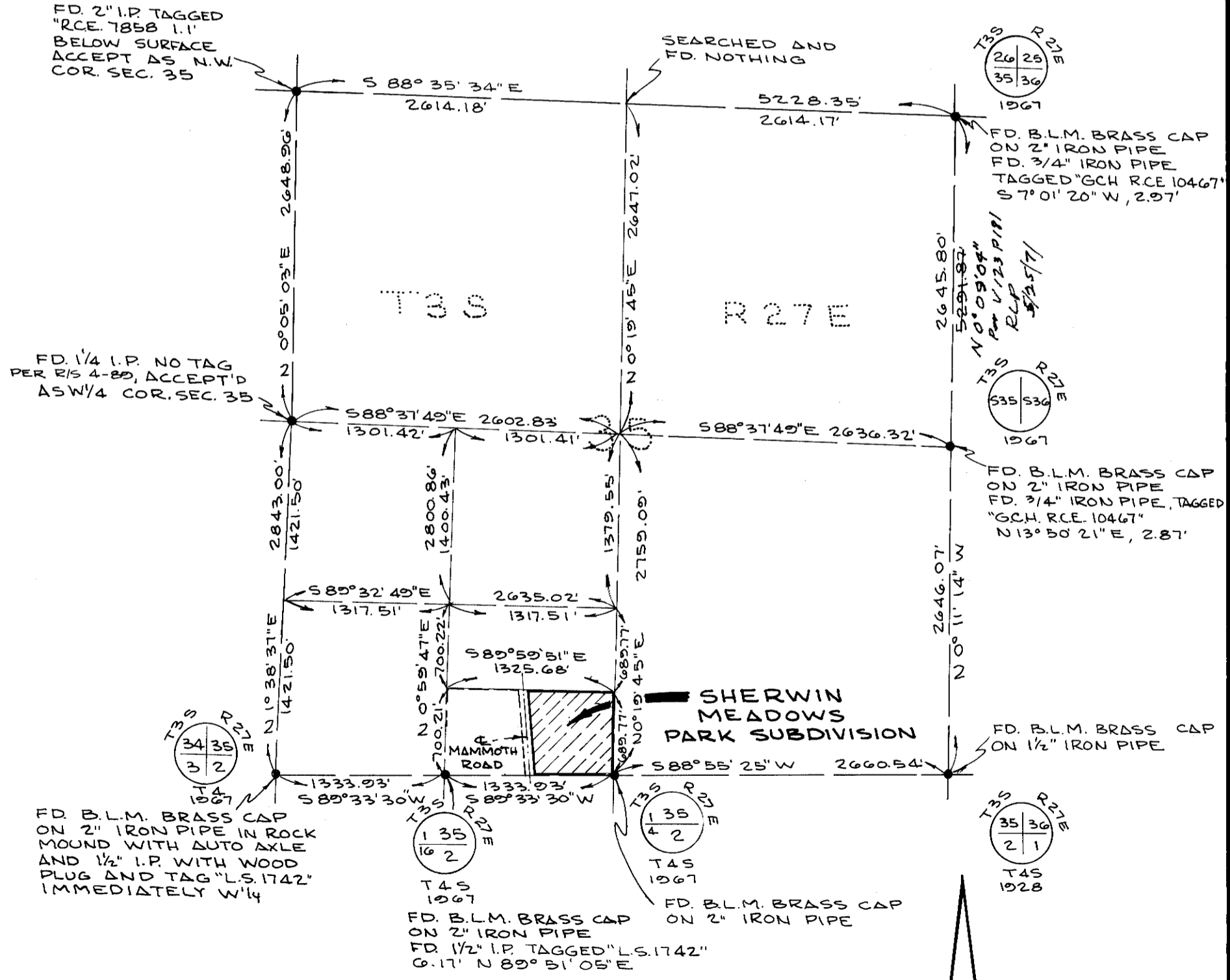
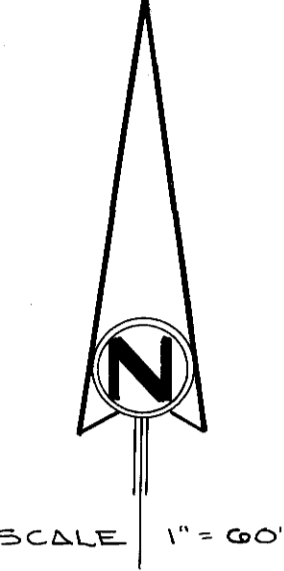
17 LOTS

GERALD F. OLDENBURG, L.S. 3246
11.645 ACRES



BASIS OF BEARINGS:
THE BEARINGS HEREON ARE BASED ON THE SOUTHERLY LINE OF THE SW 1/4 OF THE S.W. 1/4 OF SECTION 35 BEING S 89° 33' 30" W AS DETERMINED BY SOLAR OBSERVATION.

MONUMENT NOTES:
SET 2" IRON PIPE TAGGED "L.S. 3246" AT ALL TRACT CORNERS, EXCEPT AS NOTED.
SET 1" IRON PIPE TAGGED "L.S. 3246" AT ALL LOT CORNERS.
SET SPIKE AND TIN AT POINTS INDICATED THUS Δ
FOUND MONUMENTS, AS NOTED, INDICATED THUS ●



BOUNDARY SURVEY
AND
LOCATION MAP

SCALE 1" = 1000'