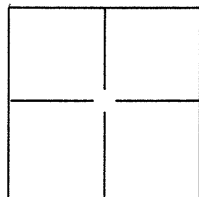


# CORNER RECORD

BK 93 PG 2Document Number CR 9219City of UNINCORPORATEDCounty of ALAMEDA, CaliforniaBrief Legal Description 163RD AVENUE AND BLANCO STREET

## CORNER TYPE

Government Corner ☐ Control ☐  
Meander ☐ Property ☐  
Rancho ☐ Other ☒

Date of Survey NOV. 3, 2016

## COORDINATES(Optional)

N. \_\_\_\_\_  
E. \_\_\_\_\_  
Zone \_\_\_\_\_ NAD27 ☐ NAD83 ☐  
NAD83 Epoch \_\_\_\_\_  
Elev. \_\_\_\_\_  
Vert. Datum: NGVD29 ☐ NADV88 ☐  
Meas. Units: Metric ☐ Imperial ☐

Corner - Left as found ☒ Found and tagged ☐ Established ☐ Reestablished ☐ Rebuilt ☐

Identification and type of corner found: Evidence used to identify or procedure used to establish or reestablish the corner:  
FOUND CONCRETE PIN MONUMENT IN MONUMENT WELL.

IN COMPLIANCE WITH SECTION 8771 OF THE PLS ACT, THIS MONUMENT WAS REFERENCED  
PRIOR TO STREET RECONSTRUCTION PER CR 8452. THE MONUMENT WAS FOUND TO BE  
UNDISTURBED PER THIS POST CONSTRUCTION CORNER RECORD.

A description of the physical condition of the monument as found and as set or reset: \_\_\_\_\_

SEE REVERSE FOR LOCATION.

## SURVEYOR'S STATEMENT

This Corner Record was prepared by me or under my direction in conformance with  
the Land Surveyor's Act on NOV. 3, 2016.

Signed Denise Baker P.L.S. or R.C.E. No.: PLS 7947



## COUNTY SURVEYOR'S STATEMENT

This Corner Record was received 4 NOVEMBER, 2016 and examined  
and filed 8 FEBRUARY, 2017.

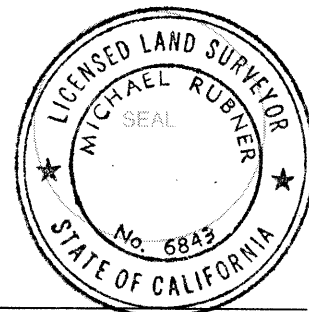
Signed Michael Rubner P.L.S. or R.C.E. No.: 6843

Title COUNTY SURVEYOR

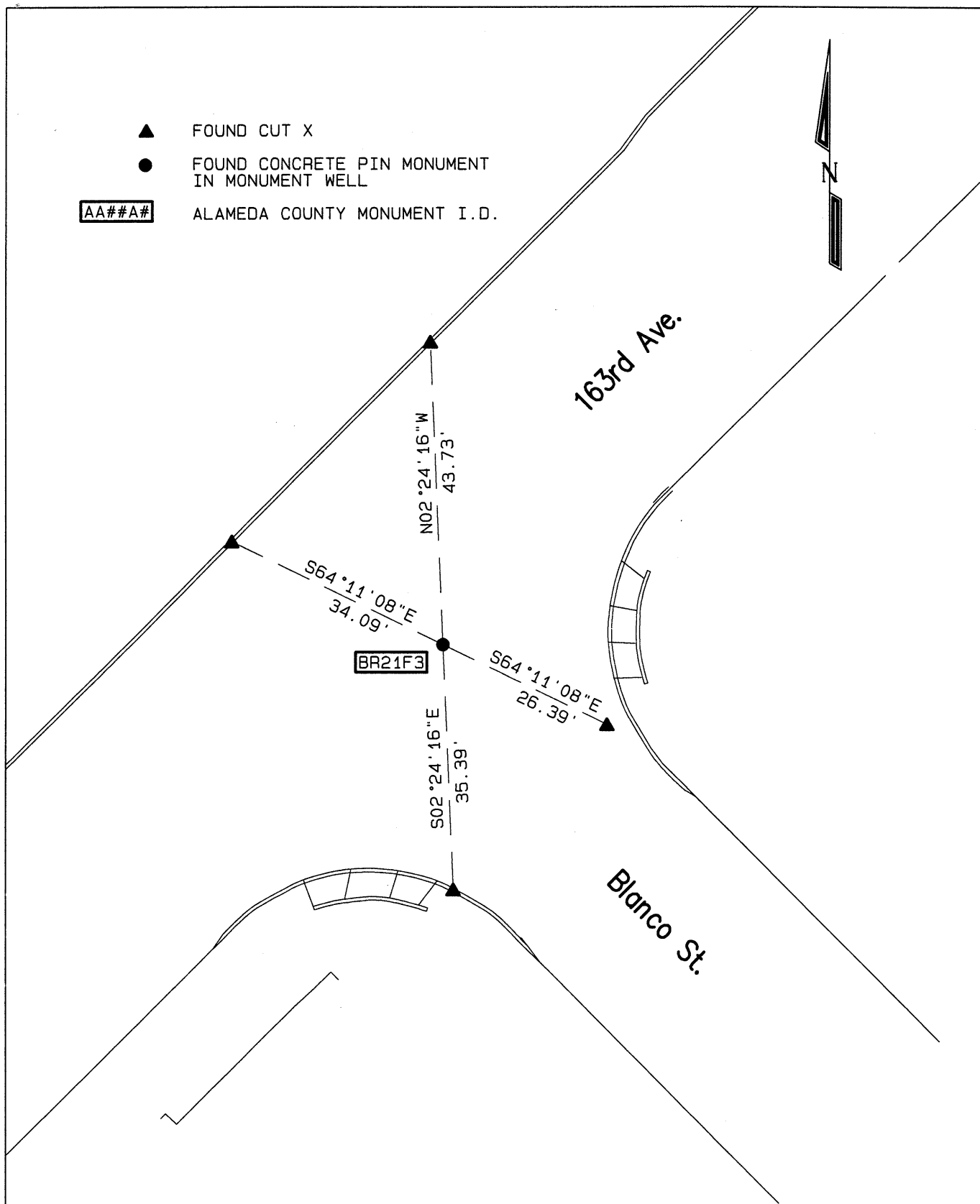
County Surveyor's Comment \_\_\_\_\_

SPEC 2200 R32085

SEE CR 8452



- ▲ FOUND CUT X
- FOUND CONCRETE PIN MONUMENT  
IN MONUMENT WELL
- AA##A# ALAMEDA COUNTY MONUMENT I.D.



Prepared by:  
CONSTRUCTION SURVEY, INC.  
800 BANCROFT WAY STE 201  
BERKELEY, CA 94710

CSI JOB NO. 160303  
SCALE: 1"=20'  
11/1/2016