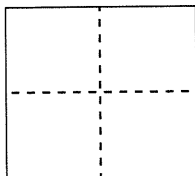


CORNER RECORDDocument Number **CR 9729**City of Oakland (APN 21-270-11)County of Alameda, CaliforniaBrief Legal Description Monument near 848 East 19th Street**CORNER TYPE**

Government Corner ☐ Control ☒
 Meander ☐ Property ☐
 Rancho ☐ Other ☐

Date of Survey January 11, 2017**COORDINATES (Optional)**

N. _____
 E. _____
 Zone _____ NAD27 ☐ NAD83 ☐
 NAD83 Epoch _____
 Elev. _____
 Vert. Datum: NGVD29 ☐ NAVD88 ☐
 Meas. Units: Metric ☐ Imperial ☐

Pre-Construction (water line) Corner Record

Corner - Left as found ☒ Found and tagged ☐ Established ☐ Reestablished ☐ Rebuilt ☐

Identification and type of corner found: Evidence used to identify or procedure used to establish or reestablish the corner:

Found monument that could be damaged or destroyed by planned water line construction project.

Monument was referenced as shown on Page 2. The purpose of this Corner Record is to preserve possible evidence only; no attempt was made to determine the relationship to property, centerline, or right-of-way lines.

A description of the physical condition of the monument as found and as set or reset:

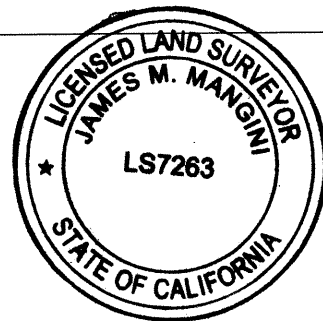
Monument was found in good condition and was referenced with four set reference points representing two intersecting lines as shown on Page 2.

Reference EBMUD Field Book 4597, Pages 44-45 (Burke/Reymann)

SURVEYOR'S STATEMENT

This Corner Record was prepared by me or under my direction in conformance with the Professional Land Surveyor's Act on FEBRUARY 15, 2017

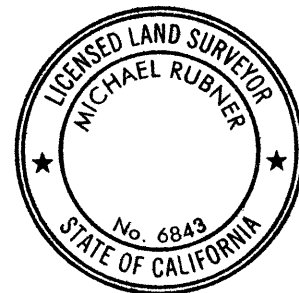
Signed James M. Mangini P.L.S. or R.C.E. No. 7263

**COUNTY SURVEYOR'S STATEMENT**

This Corner Record was received 21 FEBRUARY, 2017
 and examined and filed 17 MAY, 2017

Signed Michael Rubner P.L.S. or R.C.E. No. 6843

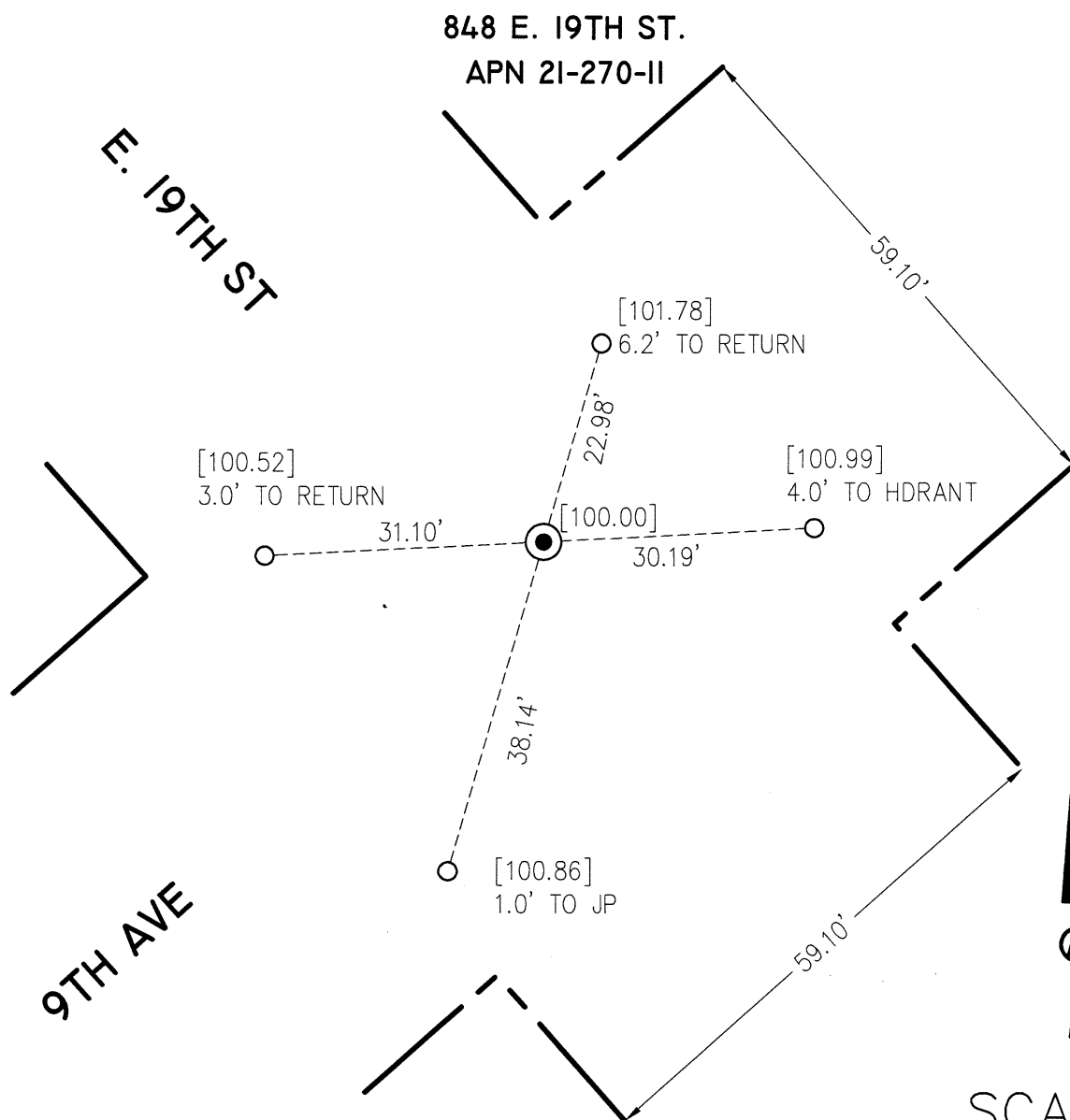
Title COUNTY SURVEYOR



County Surveyor's Comment: _____

OAKLAND

ALAMEDA COUNTY



LEGEND

- FOUND 1/4" PIN IN CONCRETE, 1.4' DOWN, UNDER STANDARD MONUMENT CASING
- SET CONCRETE ANCHOR NAIL WITH 1-1/2" BRASS WASHER, STAMPED "EBMUD MON RP"

[] ASSUMED ELEVATION (MEASURED USING A LEICA DNA10 DIGITAL LEVEL)



ADDRESS: 848 EAST 19TH ST
APN: 21-270-II

CR# 9729

CR