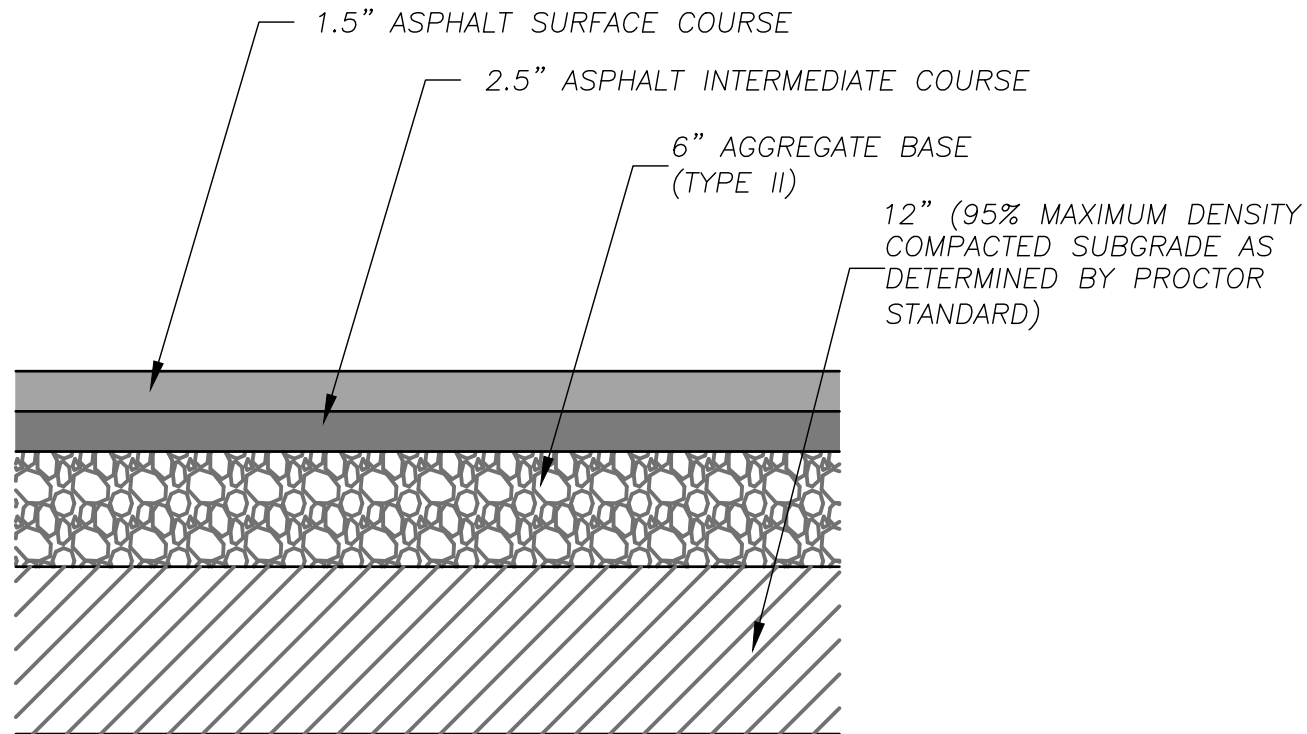


Apr-14-2021 - 2:52pm Plotted By: trivisgarcia V:\025800-Panda Express - Master 2018\025800.18-Hamilton_OH\04-DWG\Eng\Sheet\025800.18-SWTS-DT.S.dwg Layout: Civil Details 1

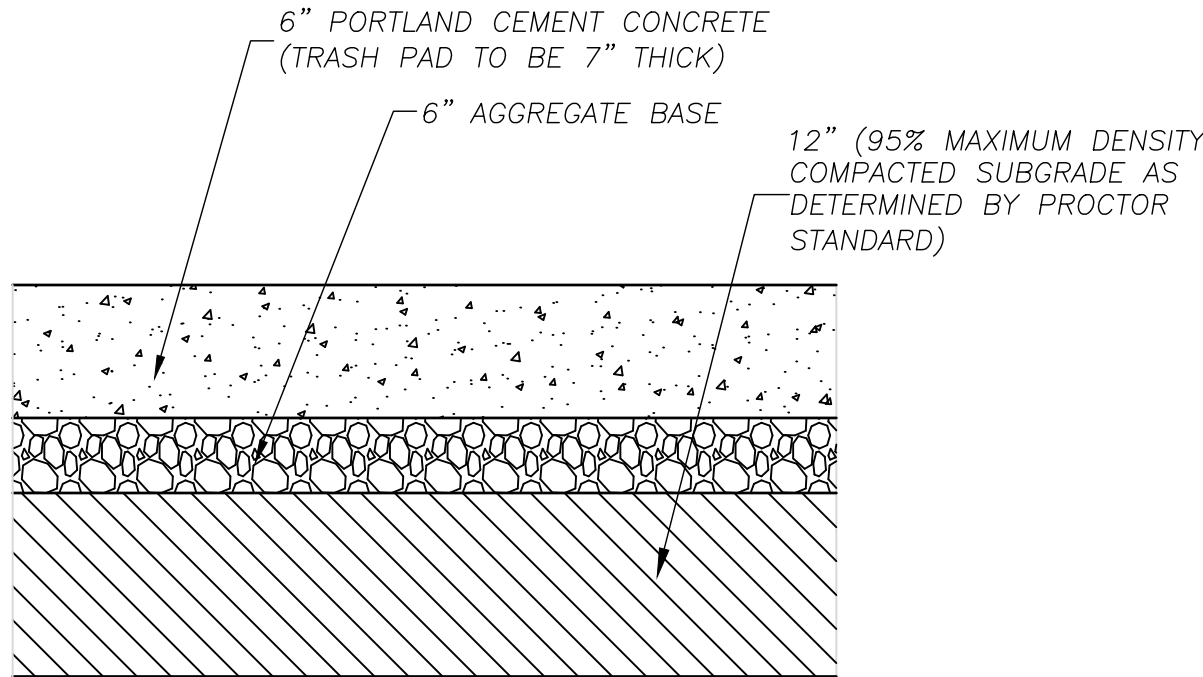
NOTES:

1. SHOP DRAWINGS FOR ASPHALT SHALL BE SUBMITTED PRIOR TO BATCHING. DENSITY TESTING FOR ASPHALT SHALL BE AT A MINIMUM OF 3 PER LIFT PER DAY DURING THE ASPHALT LAYING OPERATION. FINAL THICKNESS OF ASPHALT SHALL BE MEASURED AT 3 RANDOM LOCATIONS WITHIN THE SITE BY CORING THE PAVEMENT. THE AVERAGE OF THESE 3 CORES MUST BE GREATER THAN THE MINIMUM THICKNESS SPECIFIED IN THE PLANS.
2. ASPHALT PAVEMENT CONSTRUCTION SHALL ONLY COMMENCE WHEN AMBIENT TEMPERATURE IS 34 DEGREES FAHRENHEIT AND RISING.
3. THICKNESS SHOWN IS MINIMUM.



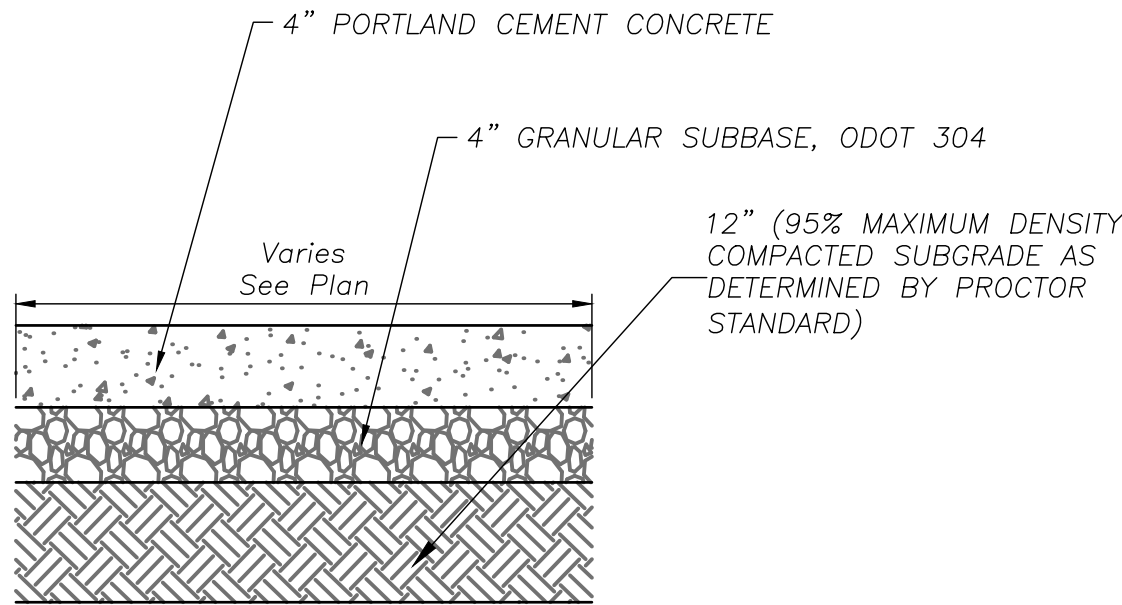
NOTES:

1. ALL EXTERIOR CONCRETE SHALL HAVE A BROOM FINISH.
2. 4000 PSI AT 28 DAYS, 4-INCH MAXIMUM SLUMP, AND 5%-7% AIR ENTRAINED MIX.
3. CONCRETE PAVEMENT CONSTRUCTION SHALL ONLY COMMENCE WHEN AMBIENT TEMPERATURE IS 34 DEGREES FAHRENHEIT AND RISING. COLD WEATHER PROCEDURES MAY BE UTILIZED FOR CONCRETE INSTALLATIONS WHEN TEMPERATURES ARE NOT SUITABLE FOR CONVENTIONAL PLACEMENT.
4. CONTRACTOR TO SUBMIT CONCRETE MIX DESIGN TO ENGINEER PRIOR TO PLACEMENT.
5. REFER TO JOINTING DETAILS, C2.3, FOR DETAILS OF CONCRETE JOINTS.



NOTES:

1. ISOLATION JOINTS SHALL BE PLACED @ 250' CENTERS OR WHERE WALKS ABUT CURBS, BUILDINGS, ETC....
2. ALL EXTERIOR CONCRETE SHALL HAVE A BROOM FINISH.
3. CONCRETE SHALL BE A 4000 PSI MIX.



001

Not to Scale

Asphalt Pavement

002

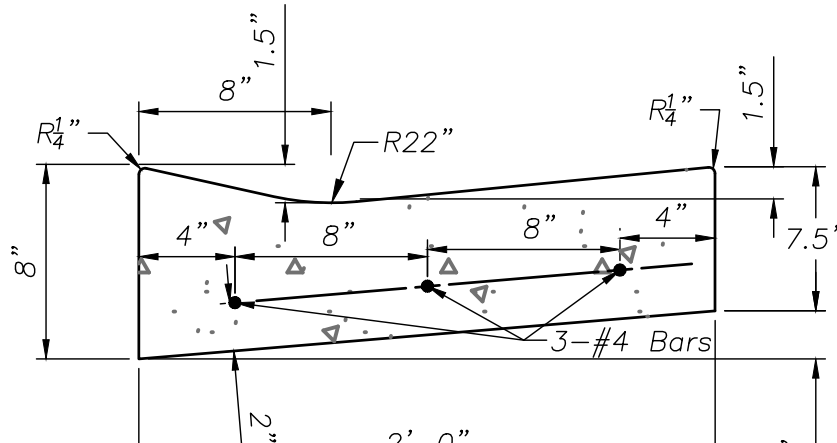
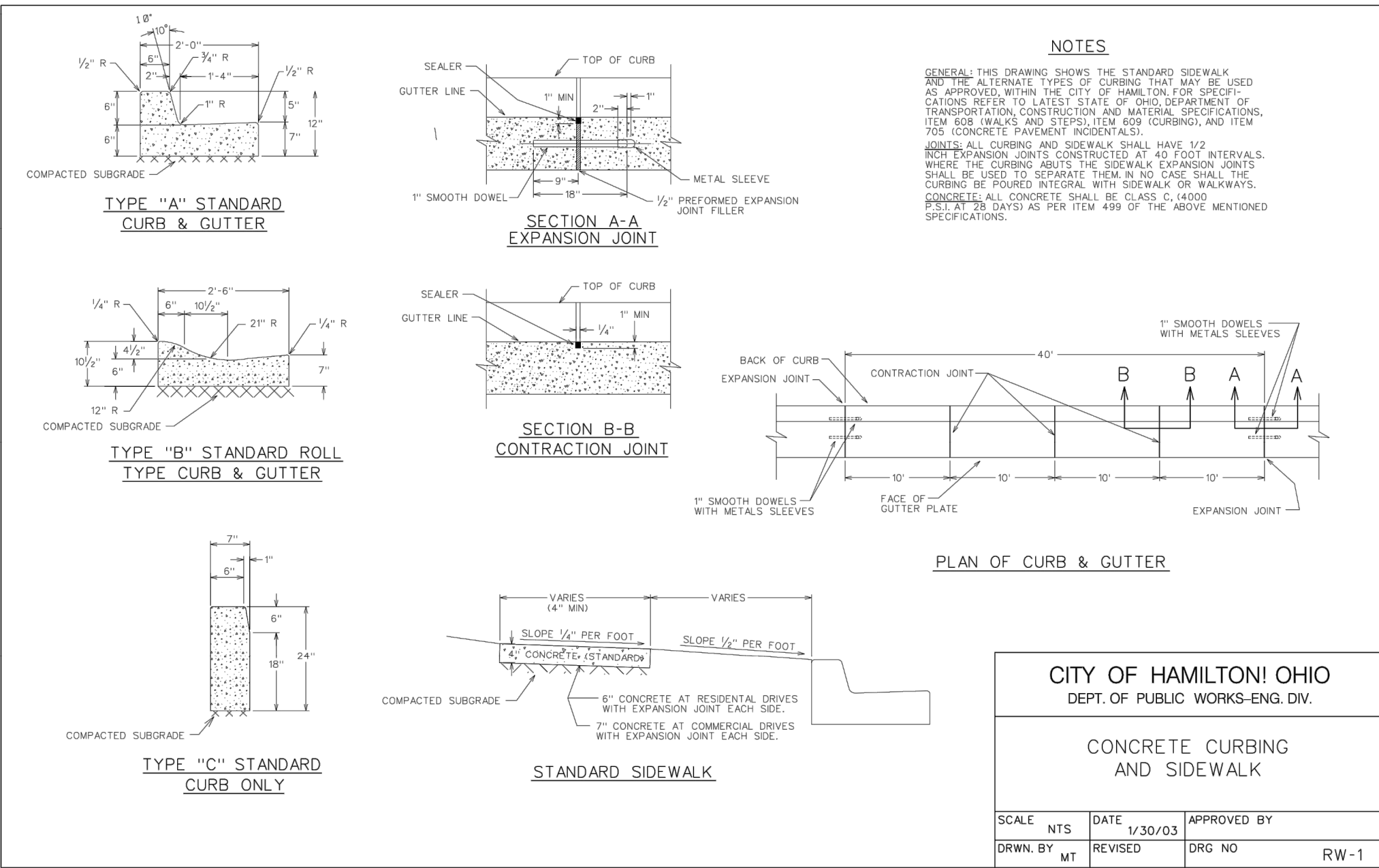
Not to Scale

Concrete Pavement

003

Not to Scale

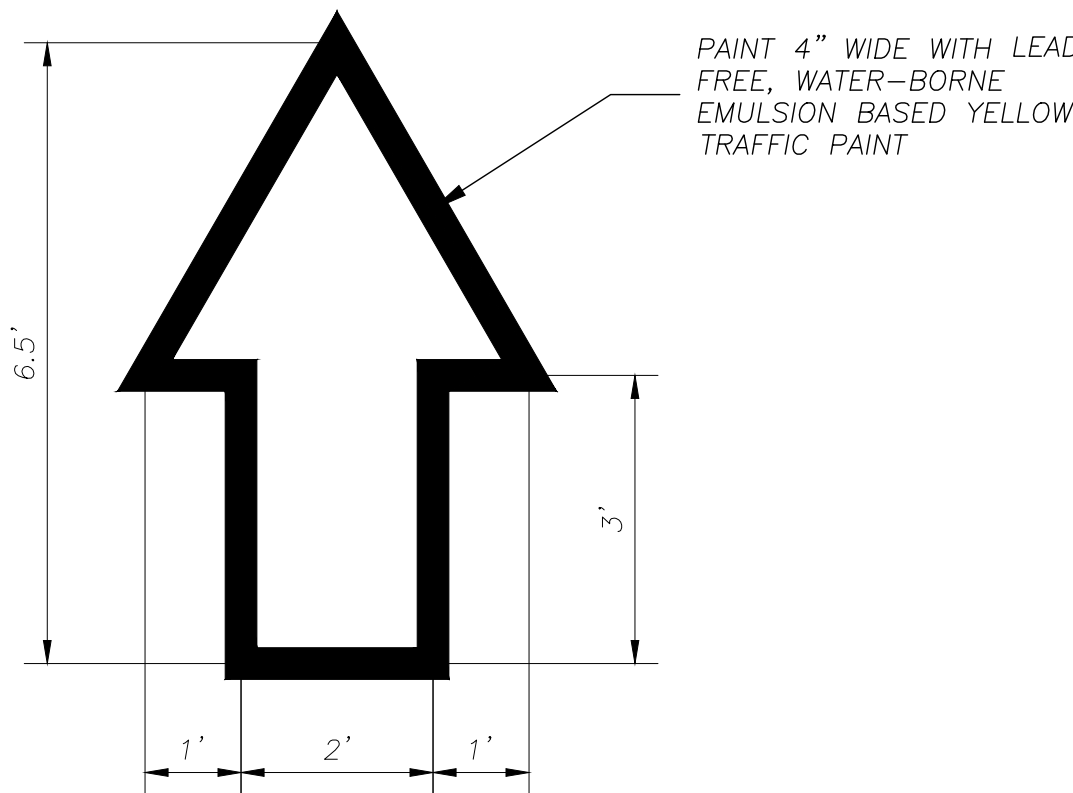
Concrete Sidewalk



VALLEY GUTTER

CURB NOTES:

1. ALL CONCRETE SHALL AIR-ENTRAINED, 4000 PSI MIX.
2. DURING DRY CURB TRANSITIONS, WATER SHALL FLOW FROM THE GUTTER TO THE LIP @ 0.5%min. SLOPE.



005

Not to Scale

Valley Gutter

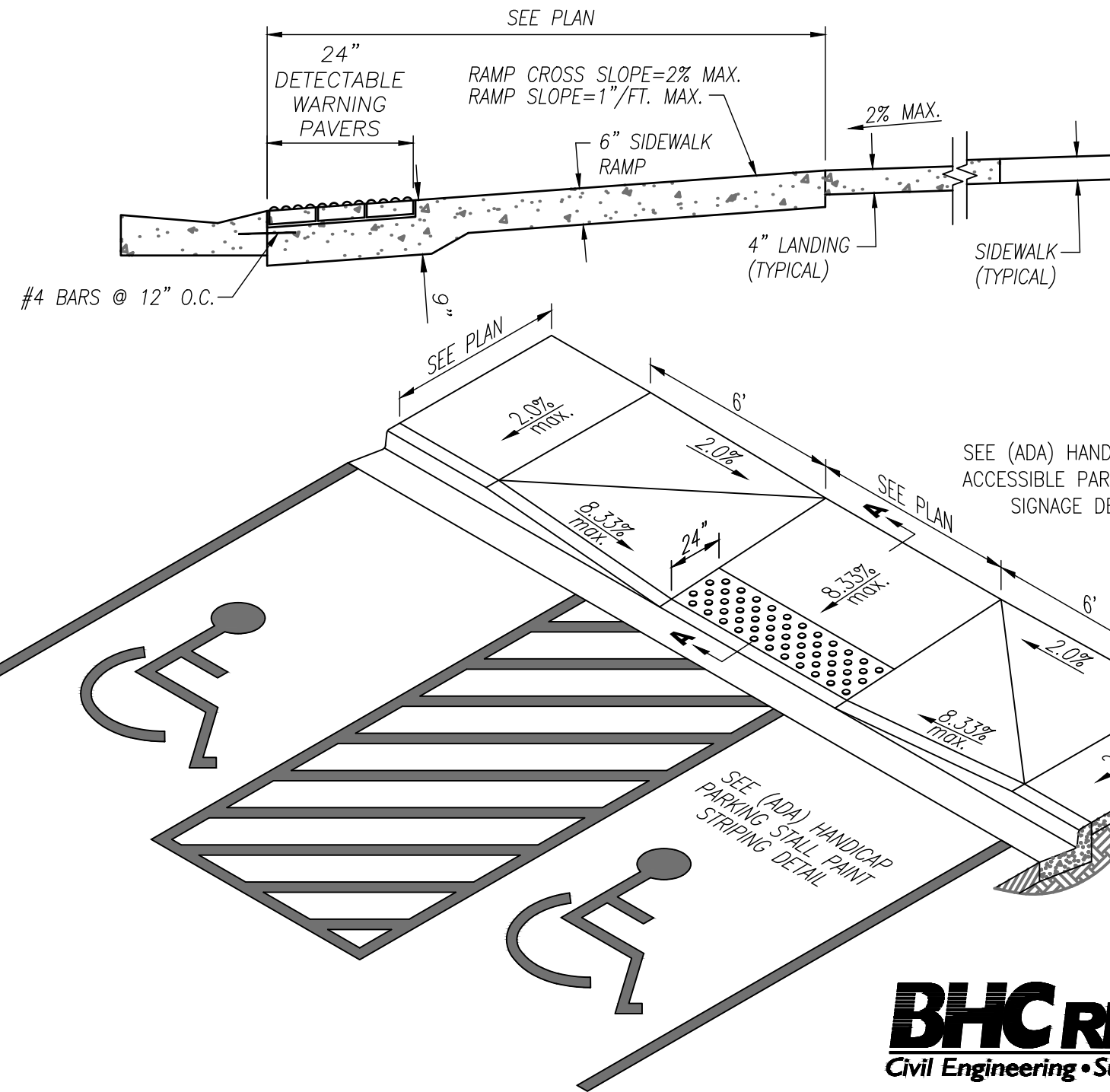
006

Not to Scale

Directional Arrow

NOTES:

1. DETECTABLE WARNING SURFACES TO BE INSTALLED AT BOTTOM 2' OF RAMPS.
2. DETECTABLE WARNING TILE TO COMPLY WITH CLARK COUNTY AREA STANDARD DRAWINGS NUMBER 235.



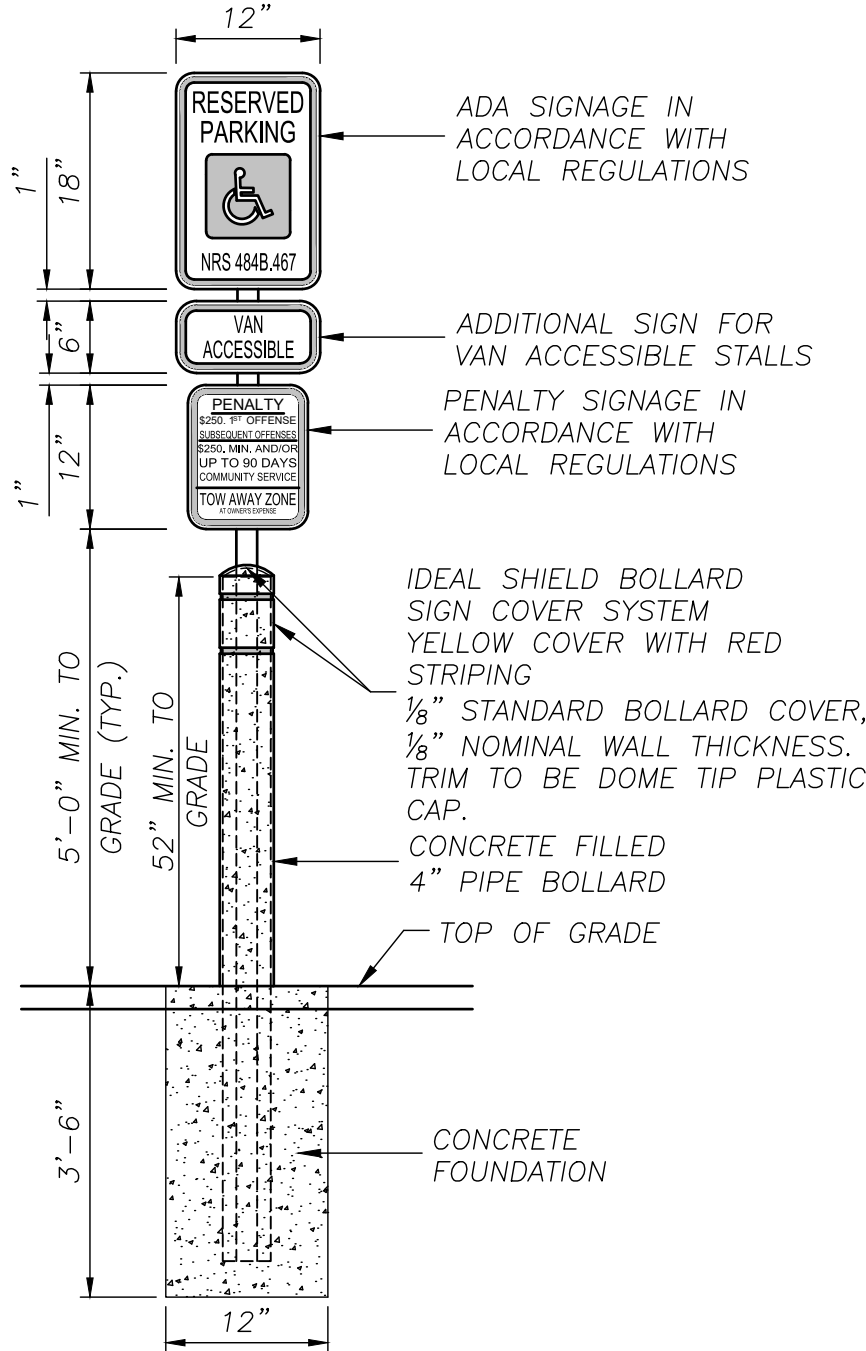
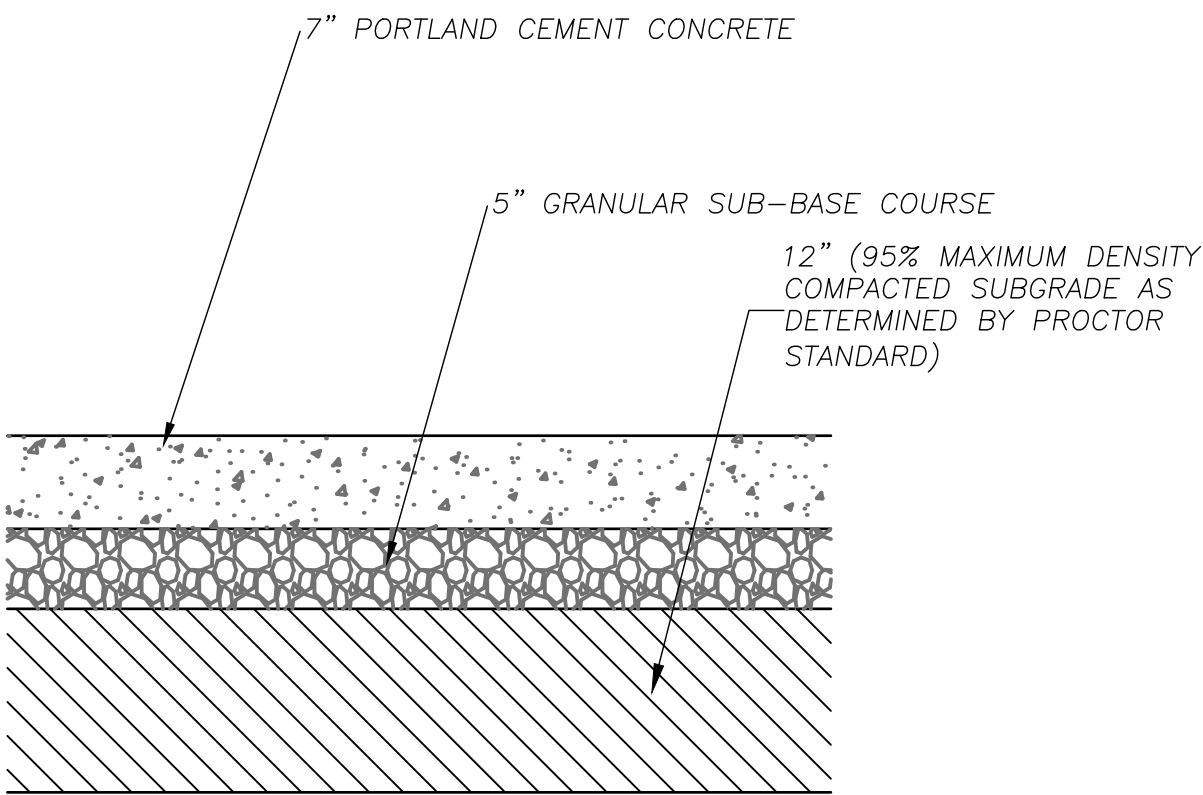
BHC RHODES
Civil Engineering • Surveying • Utilities

7101 College Blvd., Suite 400
Overland Park, Kansas 66210
p. (913) 663-1900 f. (913) 663-1633
BHC RHODES is a trademark of Brungardt Honanich & Company, P.A.

004

Not to Scale

Concrete Sidewalk, Curb & Gutter



008

Not to Scale

ADA Parking Stall Signage

009

Not to Scale

"Type A" Private Sidewalk Ramp
(ADA Compliant)



PANDA EXPRESS, INC.
1683 Walnut Grove Ave.
Rosemead, California
91770
Telephone: 626.799.9898
Facsimile: 626.372.8288

All ideas, designs, arrangement and plans indicated or represented by this drawing are the property of Panda Express Inc. and were created for use on this specific project. None of these ideas, designs, arrangements or plans may be used by or disclosed to any person, firm, or corporation without the written permission of Panda Express Inc.

REVISIONS:

ISSUE DATE:

1ST SITE PLAN REVIEW 02-16-21
2ND PERMIT/BID SET 04-09-21

DRAWN BY:

PANDA PROJECT #: S8-22-D8193

PANDA STORE #: -

ARCH PROJECT #: 20044.021



8813 PENROSE LANE, SUITE 400
LENEXA, KS 66219
ph: 913.649.8181 • fx: 913.649.1275

PANDA EXPRESS

TRUE WARM & WELCOME
1485 MAIN ST.
HAMILTON, OH 45013

CIVIL DETAILS 1

C6.0

TRUE WARM & WELCOME 2300 R5