

# CORNER RECORD

Agency Index

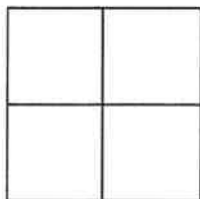
BK 140 PG 100

Document Number

CR 15404

City of OAKLAND

County of ALAMEDA, California

Brief Legal Description WELL MONUMENT LOCATED WITHIN THORNHILL DRIVE  
IN FRONT OF 5624 THORNHILL DRIVE

## CORNER TYPE

## COORDINATES (Optional)

Government Corner ☐ Control ☒  
Meander ☐ Property ☐  
Rancho ☐ Other ☐

N. \_\_\_\_\_ E. \_\_\_\_\_

Elevation \_\_\_\_\_

Units Metric ☐ U.S. Survey Foot ☐

Horizontal Datum \_\_\_\_\_

Zone \_\_\_\_\_ Epoch Date \_\_\_\_\_

Vertical Datum \_\_\_\_\_

☐ Complies with Public Resources Code §§8801-8819☐ Complies with Public Resources Code §§8890-8902PLS Act Ref: ☐ 8765 (d)☒ 8771☐ 8773☐ Other:Corner/Monument: ☒ Left as found☐ Established☐ Rebuilt☒ Pre-Construction☐ Found and tagged☐ Reestablished☒ Referenced☐ Post-Construction

Narrative of corner identified and monument as found, set, reset, replaced, or removed:

☐ See sheet #2 for description (s):

FOUND 1/4" PIN IN CONCRETE IN MONUMENT WELL.

FOUND AND SET POINTS AS SHOWN ON PAGE 2.

THIS POINT WAS REFERENCED PRIOR TO A CONSTRUCTION PROJECT IN THE VICINITY.

THE TIES SHOWN HEREON ARE FOR THE PURPOSE OF PERPETUATING FOUND MONUMENTATION.

NO CLAIM IS MADE AS TO THE RELATIONSHIP OF THE POINTS OR LINES SHOWN HEREON TO TRUE BOUNDARY LOCATION.

## SURVEYOR'S STATEMENT

This Corner Record was prepared by me or under my direction in conformance with

the Professional Land Surveyors' Act on APRIL 09, 2021.

Signed John T. May P.L.S. or R.C.E. No. 8570

JOHN T. MAY



## COUNTY SURVEYOR'S STATEMENT

This Corner Record was received \_\_\_\_\_

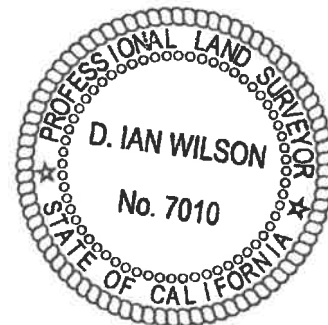
and examined and filed SEP 14 2021

Signed D. Ian Wilson P.L.S. or R.C.E. No. 7010

Title ALAMEDA COUNTY SURVEYOR

County Surveyor's Comment

CITY PROJECT NO. 1003349-DA3



SCALE: 1"=30'

## LEGEND

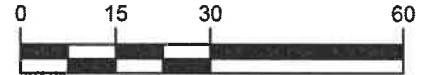
● FOUND PIN IN CONCRETE IN MONUMENT WELL

○ SET REBAR AND CAP "TOWILL RP"

APN ASSESSOR'S PARCEL NUMBER

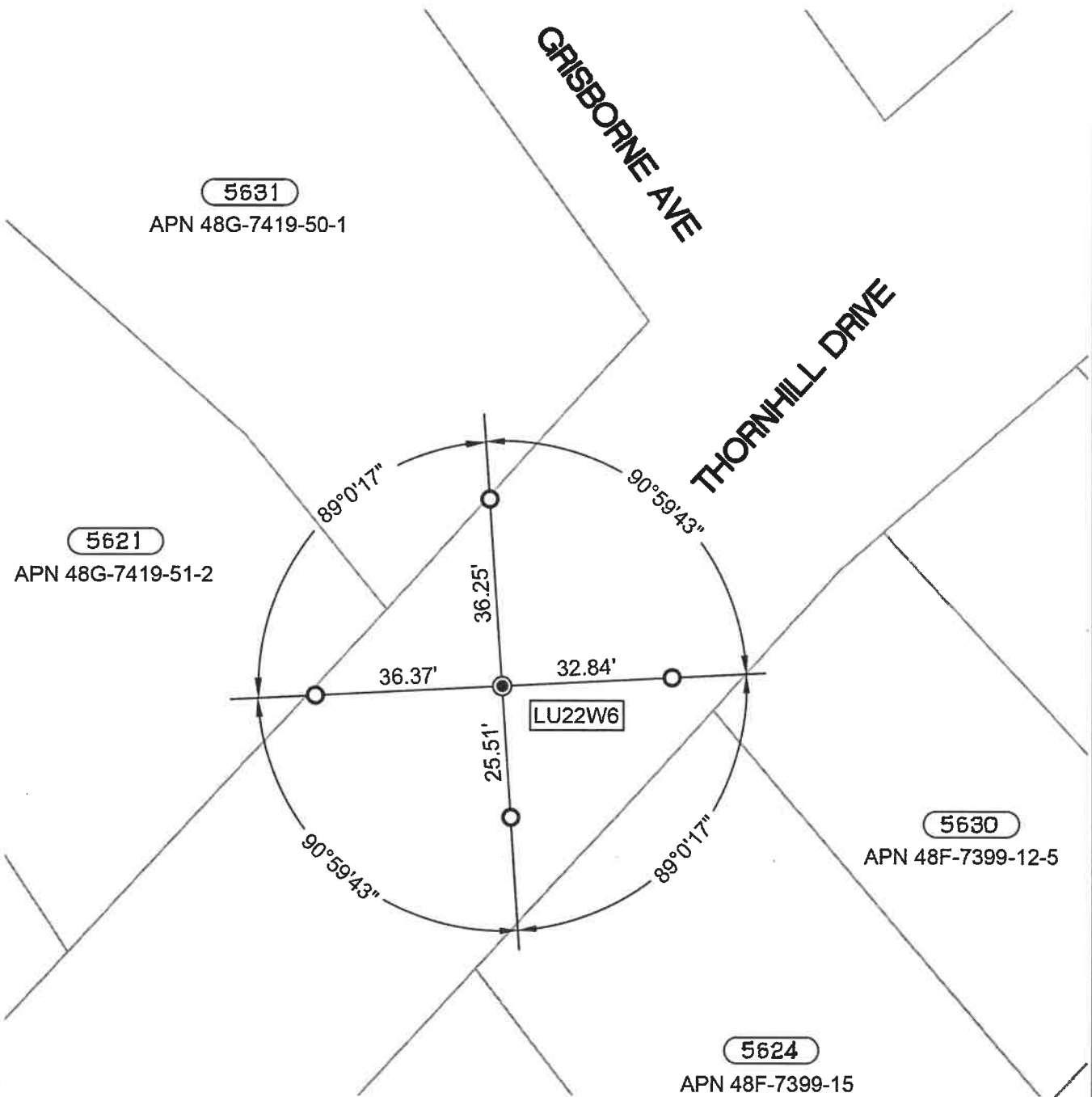
AA##A# ALAMEDA COUNTY MONUMENT ID

6606 REFERENCE STREET ADDRESS



GRAPHIC SCALE: 1 INCH = 30 FT

ALL MEASUREMENTS ARE IN U.S. SURVEY FOOT AND DECIMAL THEREOF



16820-16647-4589-Thornhill-pre-CR-02