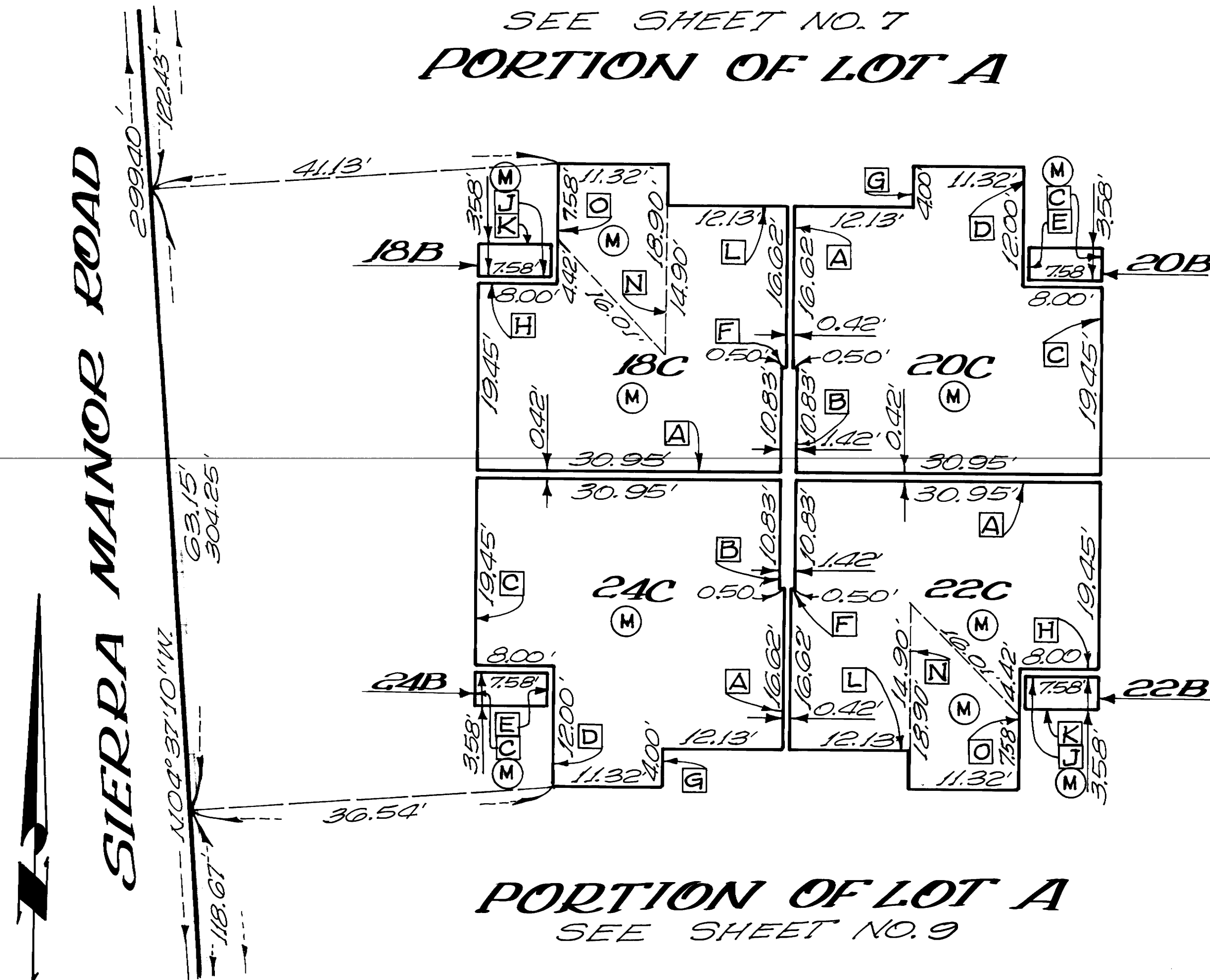


PORTION OF LOT A
SEE SHEET NO. 9



L.B.= ELEVATION OF LOWER VERTICAL BOUNDARY.
 U.B.= ELEVATION OF UPPER VERTICAL BOUNDARY.
 (M) = INCLINED PLANE AREAS, SEE SHT. 3, NOTE NO. 7.
 □ = U.B. ELEVATIONS AT INCLINED PLANE AREAS.

$L.B. = 7844.38$		$U.B. = 7873.55$
$U.B. \begin{array}{ c } \hline A \\ \hline \end{array} = 7865.61$		$\begin{array}{ c } \hline G \\ \hline \end{array} = 7870.50$
$\begin{array}{ c } \hline B \\ \hline \end{array} = 7865.40$		$\begin{array}{ c } \hline H \\ \hline \end{array} = 7867.16$
$\begin{array}{ c } \hline D \\ \hline \end{array} = 7868.83$		$\begin{array}{ c } \hline L \\ \hline \end{array} = 7873.38$
$\begin{array}{ c } \hline F \\ \hline \end{array} = 7872.55$		$\begin{array}{ c } \hline N \\ \hline \end{array} = 7868.60$
		$\begin{array}{ c } \hline O \\ \hline \end{array}$

U.B.

C
E

 = 7865.50 U.B.

J
K

 = 7870.32

FOREST MEADOWS
MONO COUNTY, CALIFORNIA

BEING A SUBDIVISION OF LOTS 8, 9, 10 & 11 OF SHERWIN
MEADOWS PARK SUBDIVISION, M.B. 5-127/127A AND A POR-
TION OF THE N1/2, SE1/4, SW1/4, SECTION 35, T.3 S.,
R. 27E., M. D. M..

PLAN FOR CONDOMINIUM PURPOSES

SCALE: 1" = 10'